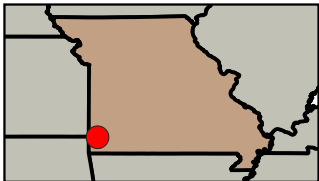
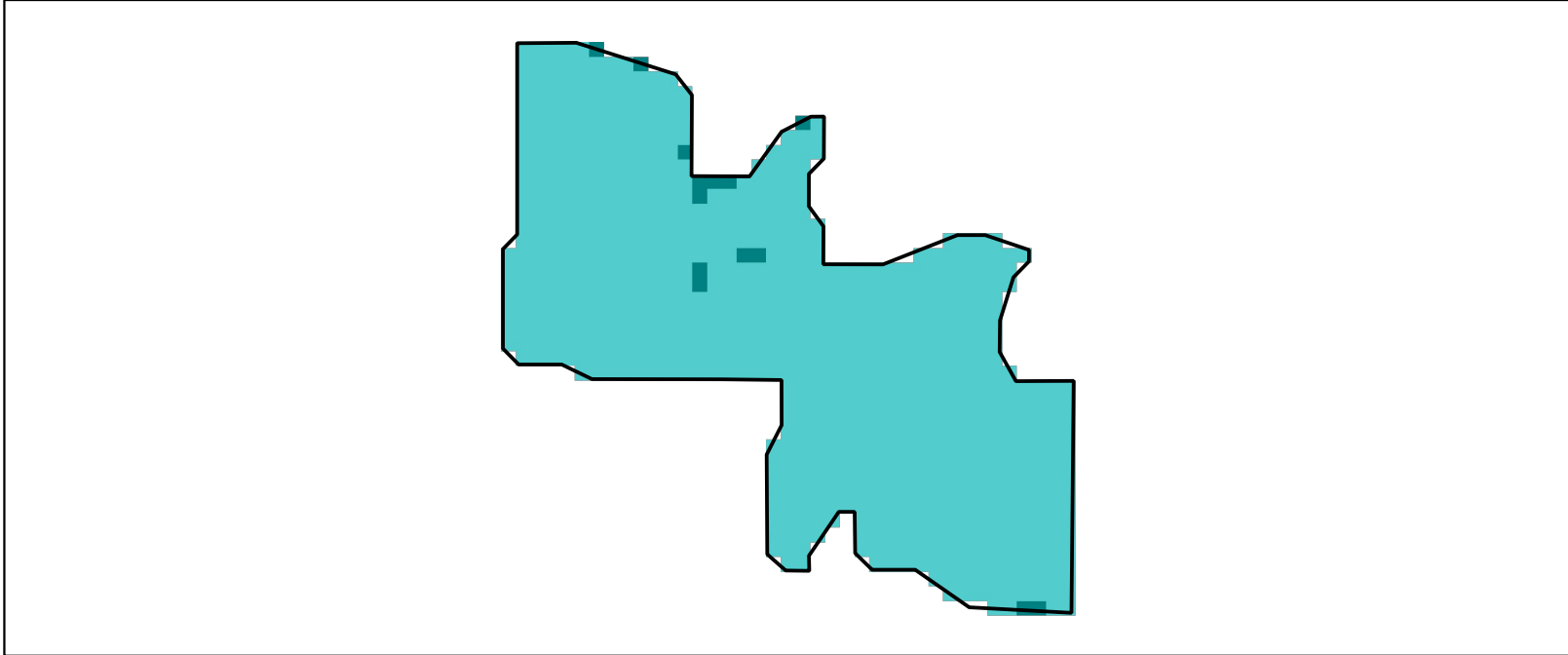
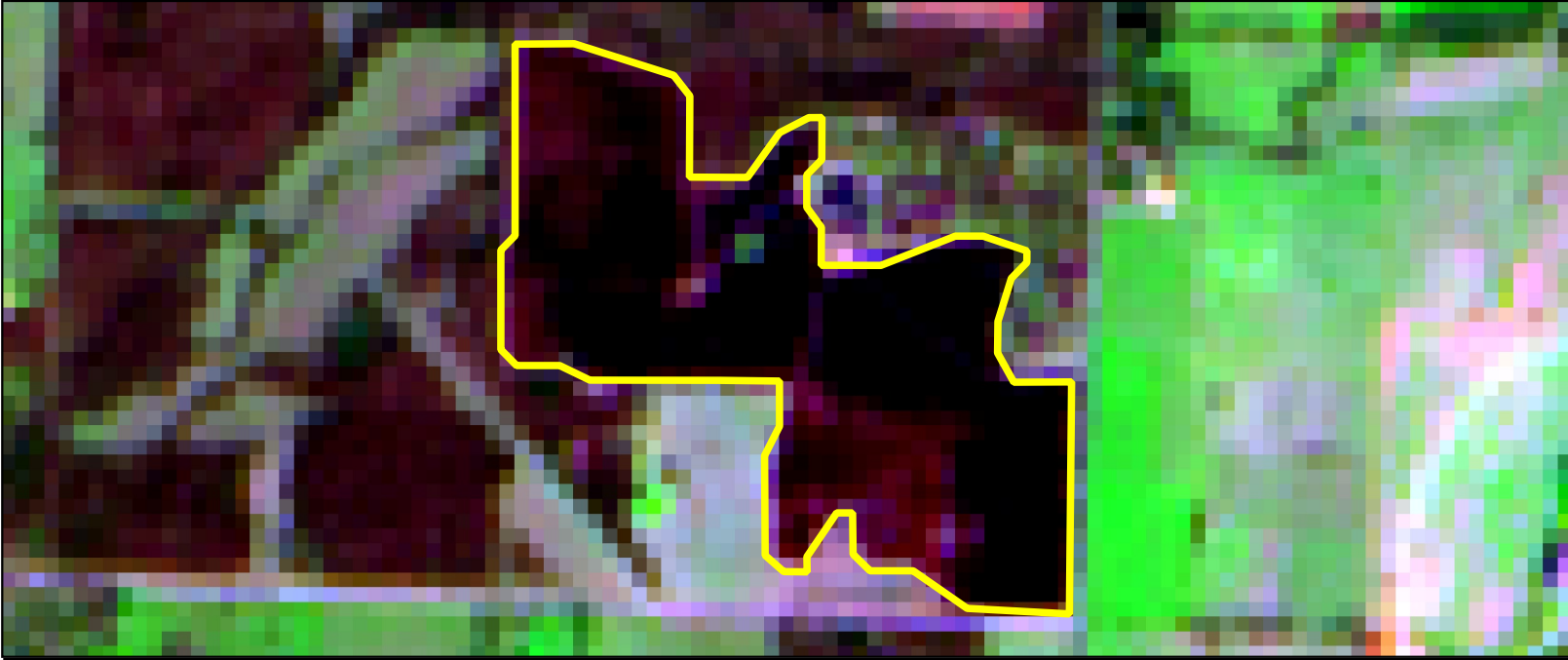


2026 Missouri: FY27 GWCA SOUTH PRAIRIE

mo3698309435620260319



Latitude: 36 59 00.3
Longitude: -94 21 21.2
Fire Ignition Date: March 19, 2026
Assessment Type: Initial
Pre-Fire Image Date: 2026-03-16 (S2B)
Post-Fire Image Date: 2026-03-21 (S2C)

This map portrays fire severity for the fire specified in the map title and summarizes proportions of fire severity classes. These data are produced under the National Park Service program jointly implemented by the USGS EROS and the USFS GTAC. The nps program ascertains the locations of fires based on available fire occurrence information provided by federal and state agencies, and other reliable sources. The nps program reserves the right to correct, update or modify geospatial inputs to this map without notification.

* Areas in either the pre-fire or post-fire reflectance imagery containing clouds, snow, shadows, smoke, significantly sized water bodies, missing lines of image data, etc.

0 0 0 Miles



Acreage of Burn Severity	
Burn Severity	Acres
Unburned to Low	1
Low	78
Moderate	0
High	0
Increased Greenness	0
Mask Area*	0
Total	79

