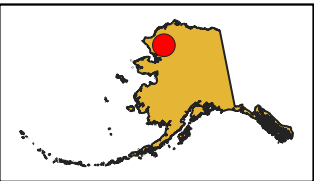
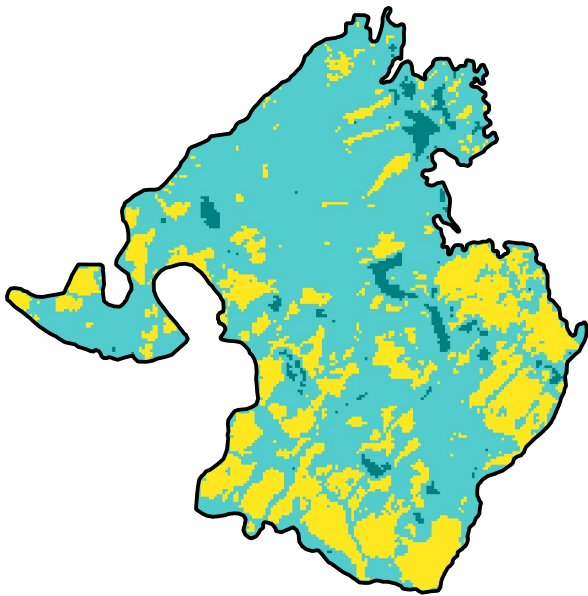
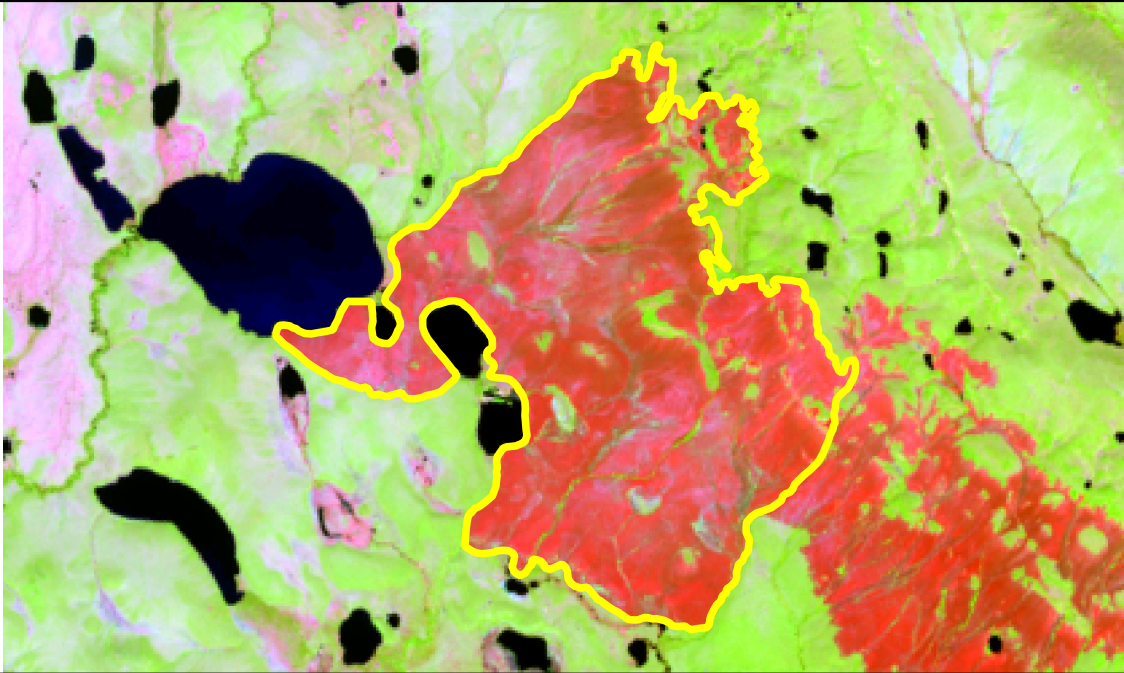


2025 Alaska: ANIRALIK

ak6820315973620250619



Latitude: 68 12 10.8
Longitude: -159 44 09.6
Fire Ignition Date: June 19, 2025
Assessment Type: Initial
Pre-Fire Image Date: 2024-07-24 (L8)
Post-Fire Image Date: 2025-07-11 (L8)

This map portrays fire severity for the fire specified in the map title and summarizes proportions of fire severity classes. These data are produced under the Monitoring Trends in Burn Severity (MTBS) program jointly implemented by the USGS EROS and the USFS GTAC. The MTBS program ascertains the locations of fires based on available fire occurrence information provided by federal and state agencies, and other reliable sources. The MTBS program reserves the right to correct, update or modify geospatial inputs to this map without notification.

* Areas in either the pre-fire or post-fire reflectance imagery containing clouds, snow, shadows, smoke, significantly sized water bodies, missing lines of image data, etc.

0 1 2 Miles



Acreage of Burn Severity	
Burn Severity	Acres
Unburned to Low	163
Low	3,422
Moderate	1,347
High	0
Increased Greenness	0
Mask Area*	0
Total	4,932

