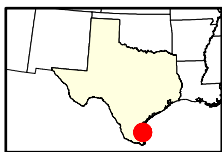
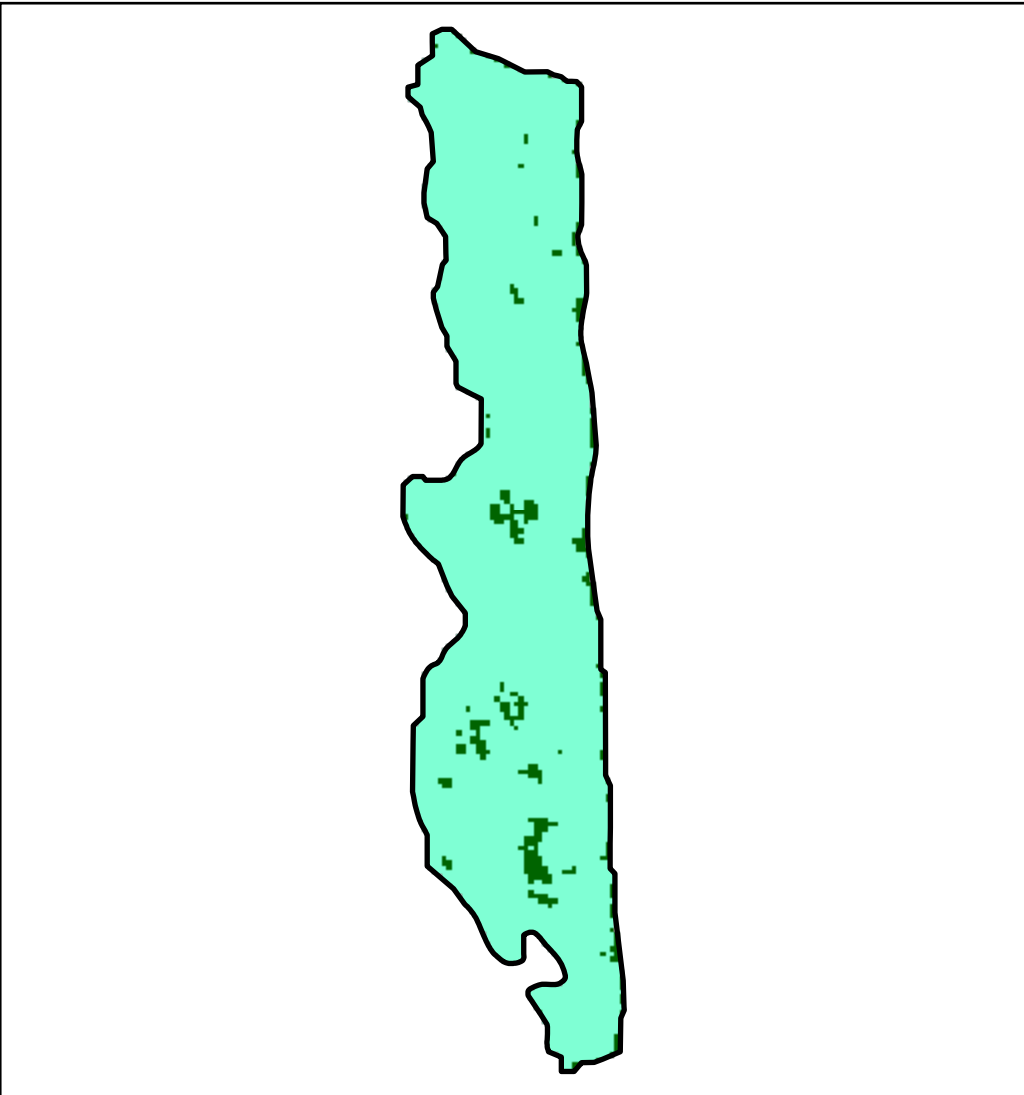
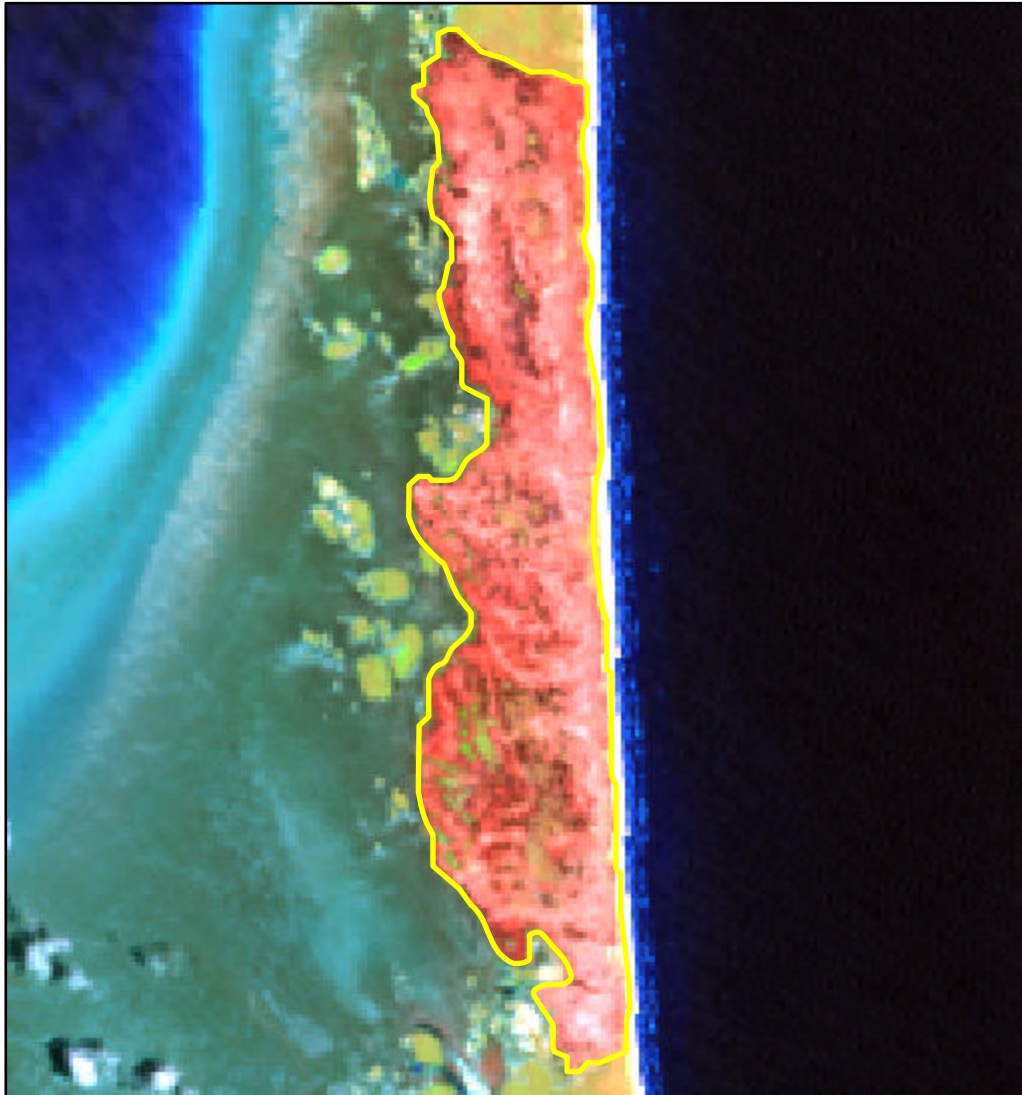


# 2024 Texas: MILE MARKER 32

tx2695709738120240419



Latitude: 26° 58' 40.8"  
Longitude: -97° 22' 58.8"  
Fire Ignition Date: April 19, 2024  
Assessment Type: Initial  
Pre-Fire Image Date: April 22, 2023 (L9)  
Post-Fire Image Date: April 24, 2024 (L9)



This map portrays fire severity for the fire specified in the map title and summarizes proportions of fire severity classes. These data are produced under the Monitoring Trends in Burn Severity (MTBS) program jointly implemented by the USGS EROS and the USFS GTAC. The MTBS program ascertains the locations of fires based on available fire occurrence information provided by federal and state agencies, and other reliable sources. The MTBS program reserves the right to correct, update or modify geospatial inputs to this map without notification.

\* Areas in either the pre-fire or post-fire reflectance imagery containing clouds, snow, shadows, smoke, significantly sized water bodies, missing lines of image data, etc.

0 1 2  
Miles

## Acreage of Burn Severity

Burn Severity	Acres
Unburned to Low	70
Low	1,357
Moderate	0
High	0
Increased Greenness	0
Non-Processing Area Mask*	0
<b>Total</b>	<b>1,426</b>