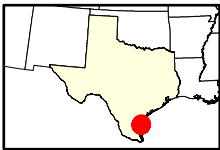
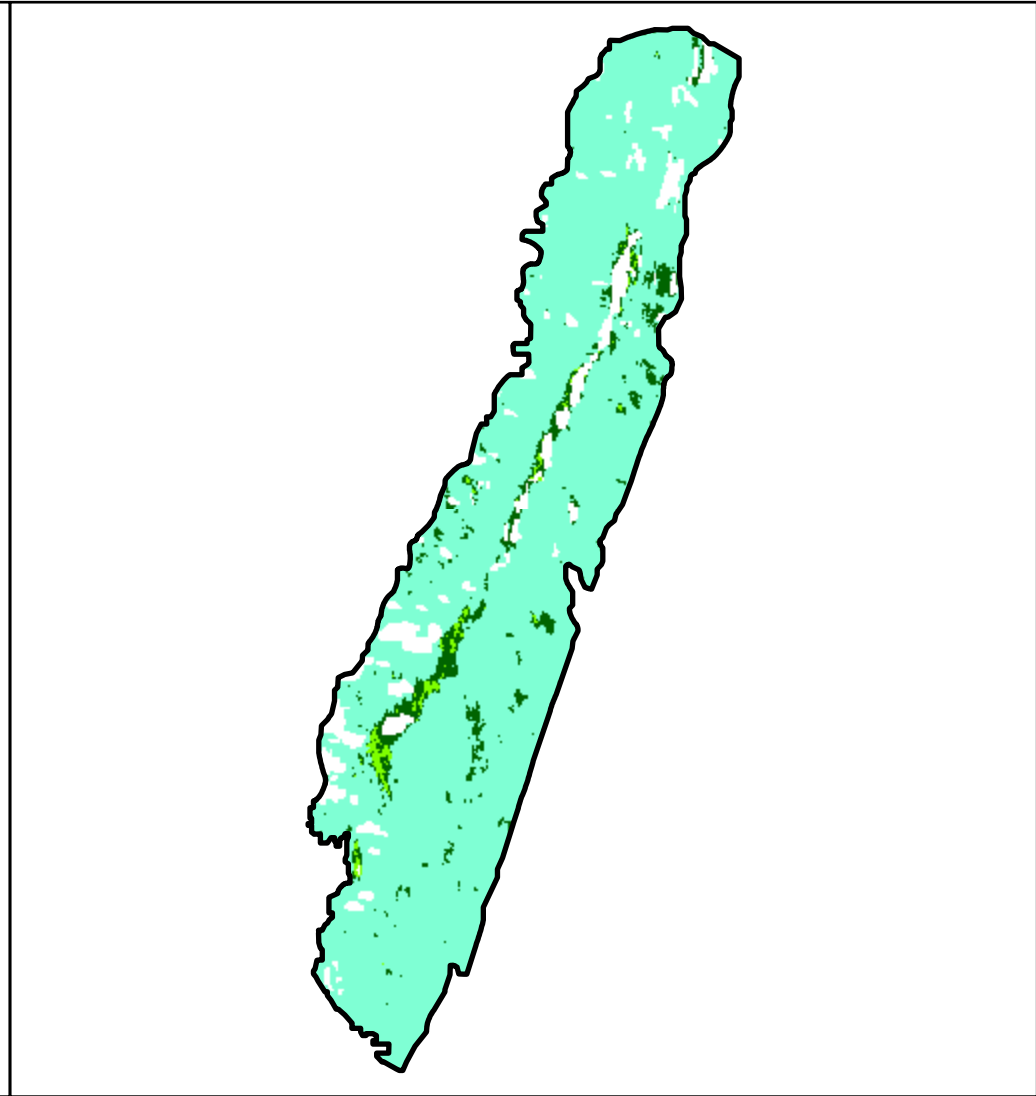
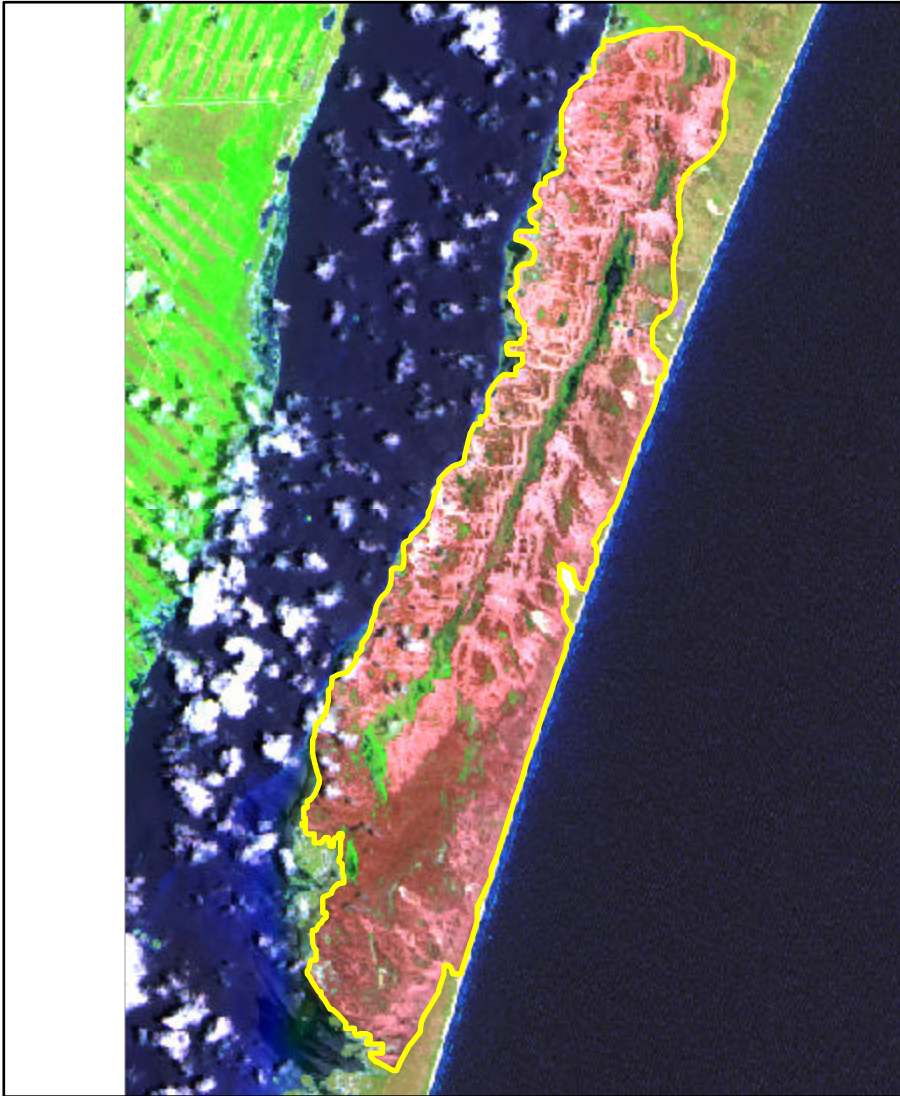


2024 Texas: LAGUNA 24

tx2742709732520240511



Latitude: 27° 23' 13.2"
Longitude: -97° 19' 37.2"
Fire Ignition Date: May 11, 2024
Assessment Type: Initial
Pre-Fire Image Date: May 01, 2023 (S2B)
Post-Fire Image Date: May 20, 2024 (S2A)



This map portrays fire severity for the fire specified in the map title and summarizes proportions of fire severity classes. These data are produced under the Monitoring Trends in Burn Severity (MTBS) program jointly implemented by the USGS EROS and the USFS GTAC. The MTBS program ascertains the locations of fires based on available fire occurrence information provided by federal and state agencies, and other reliable sources. The MTBS program reserves the right to correct, update or modify geospatial inputs to this map without notification.

* Areas in either the pre-fire or post-fire reflectance imagery containing clouds, snow, shadows, smoke, significantly sized water bodies, missing lines of image data, etc.

0 2.5 5 Miles

Acreage of Burn Severity

Burn Severity	Acres
Unburned to Low	655
Low	10,469
Moderate	0
High	0
Increased Greenness	111
Non-Processing Area Mask*	912
Total	12,147