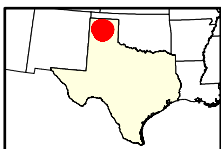
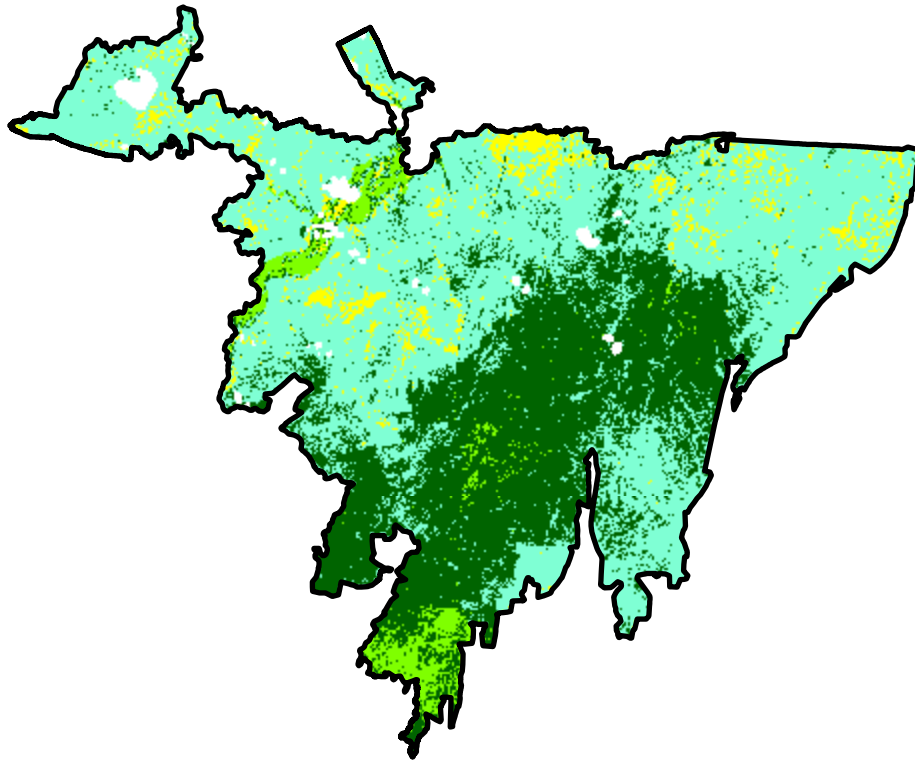
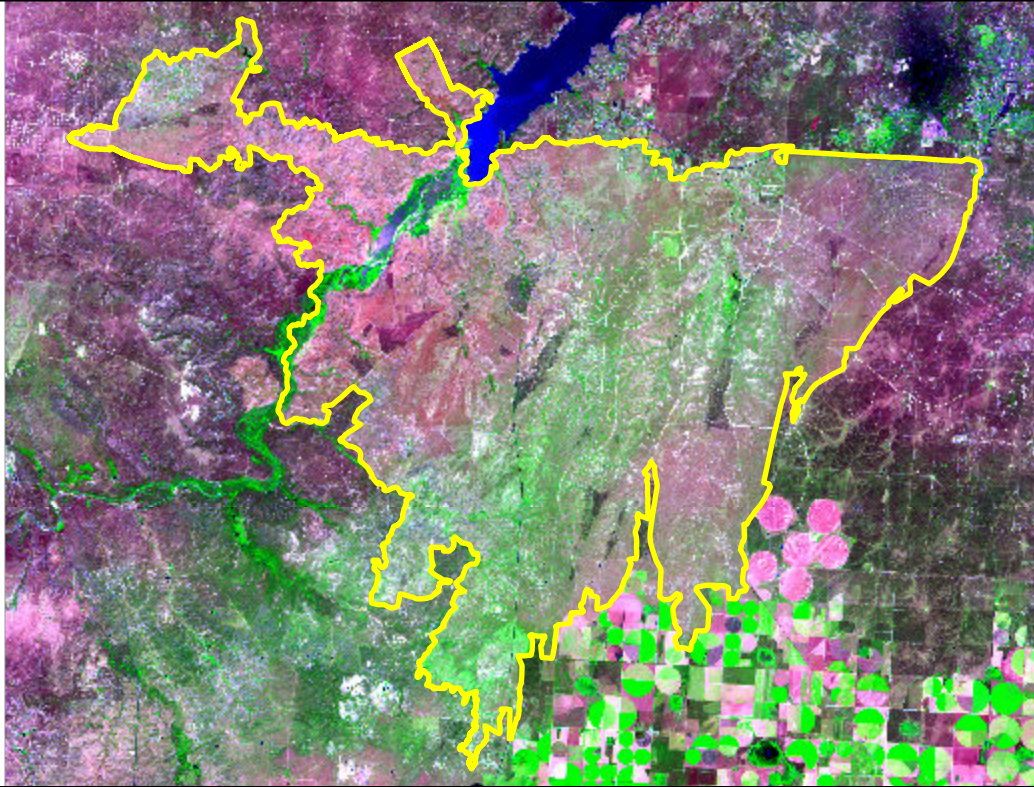


2024 Texas: WINDY DEUCE

tx3563110185120240227



Latitude: 35° 31' 08.4"
Longitude: -101° 38' 42.0"
Fire Ignition Date: February 27, 2024
Assessment Type: Extended
Pre-Fire Image Date: May 30, 2023 (S2B)
Post-Fire Image Date: July 13, 2024 (S2B)



Acreage of Burn Severity

Burn Severity	Acres
Unburned to Low	113,237
Low	179,981
Moderate	17,455
High	0
Increased Greenness	12,458
Non-Processing Area Mask*	5,087
Total	328,219

This map portrays fire severity for the fire specified in the map title and summarizes proportions of fire severity classes. These data are produced under the National Burn Severity Mapping Project (NBSMP) jointly implemented by the USGS EROS and the NPS. The NBSMP ascertains the locations of fires based upon special requests from NPS staff members. The NBSMP reserves the right to correct, update or modify geospatial inputs to this map without notification.

* Areas in either the pre-fire or post-fire reflectance imagery containing clouds, snow, shadows, smoke, significantly sized water bodies, missing lines of image data, etc.

0 7.5 15
Miles