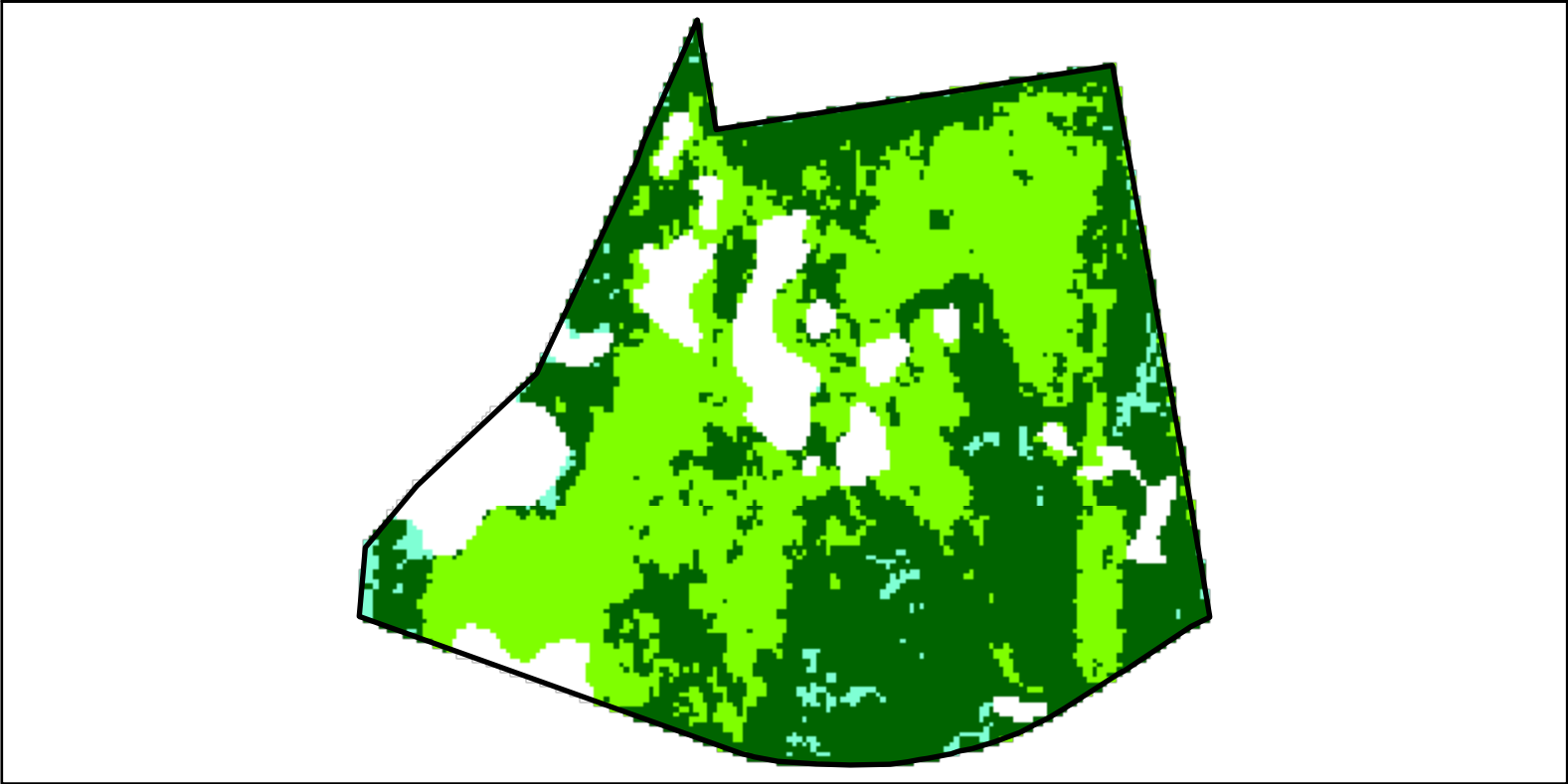
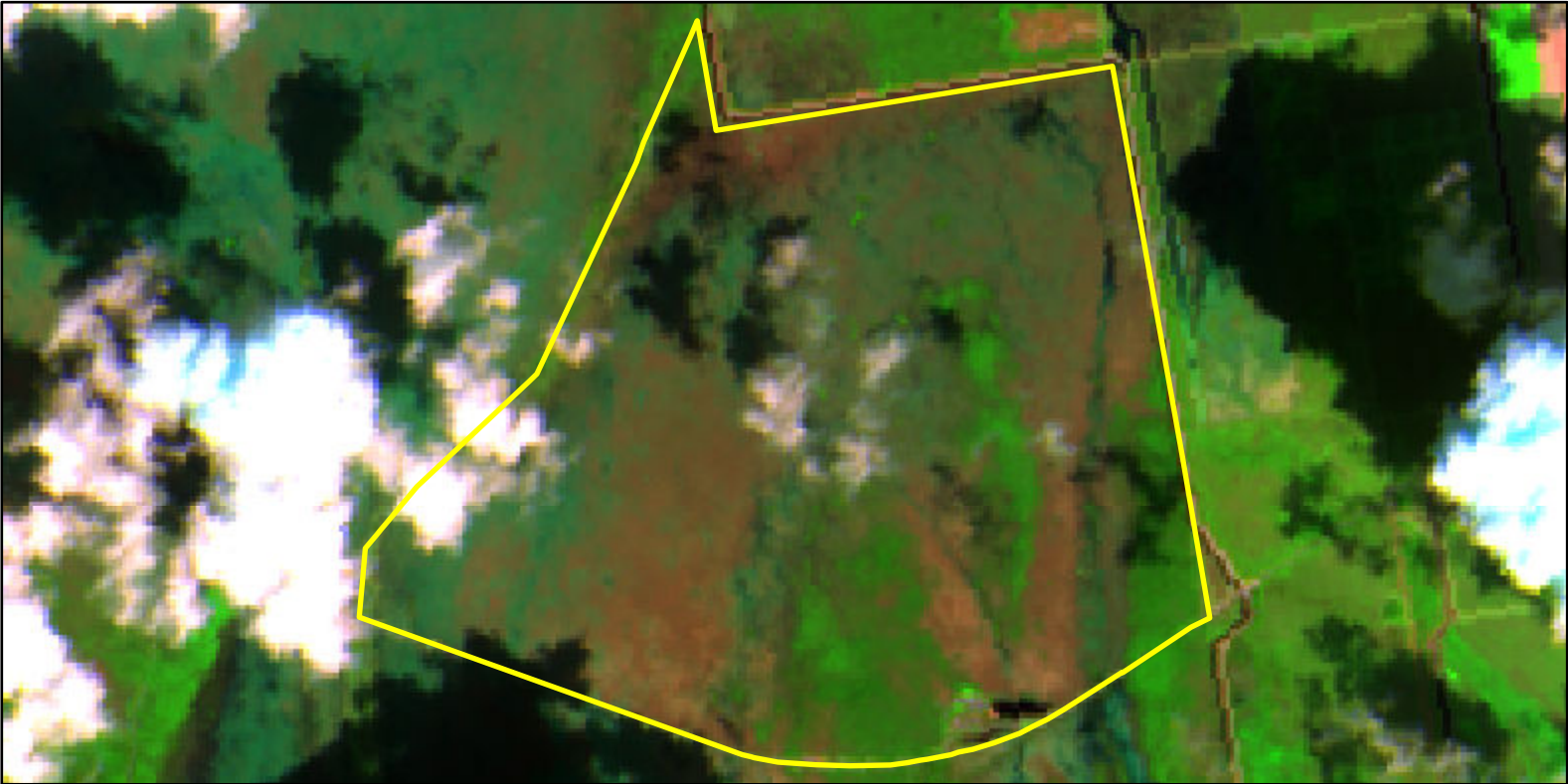


2024 Florida: EVER NORTH OF HQ RX

f12539508058320240213

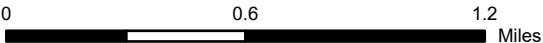


Latitude: 25° 24' 28.8"  
Longitude: -80° 35' 27.6"  
Fire Ignition Date: February 13, 2024  
Assessment Type: Initial  
Pre-Fire Image Date: March 01, 2023 (S2B)  
Post-Fire Image Date: March 10, 2024 (S2A)



This map portrays fire severity for the fire specified in the map title and summarizes proportions of fire severity classes. These data are produced under the National Burn Severity Mapping Project (NBSMP) jointly implemented by the USGS EROS and the NPS. The NBSMP ascertains the locations of fires based upon special requests from NPS staff members. The NBSMP reserves the right to correct, update or modify geospatial inputs to this map without notification.

\* Areas in either the pre-fire or post-fire reflectance imagery containing clouds, snow, shadows, smoke, significantly sized water bodies, missing lines of image data, etc.



Acreage of Burn Severity	
Burn Severity	Acres
Unburned to Low	1,727
Low	83
Moderate	0
High	0
Increased Greenness	1,514
Non-Processing Area Mask*	477
Total	3,800