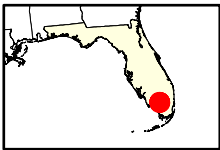
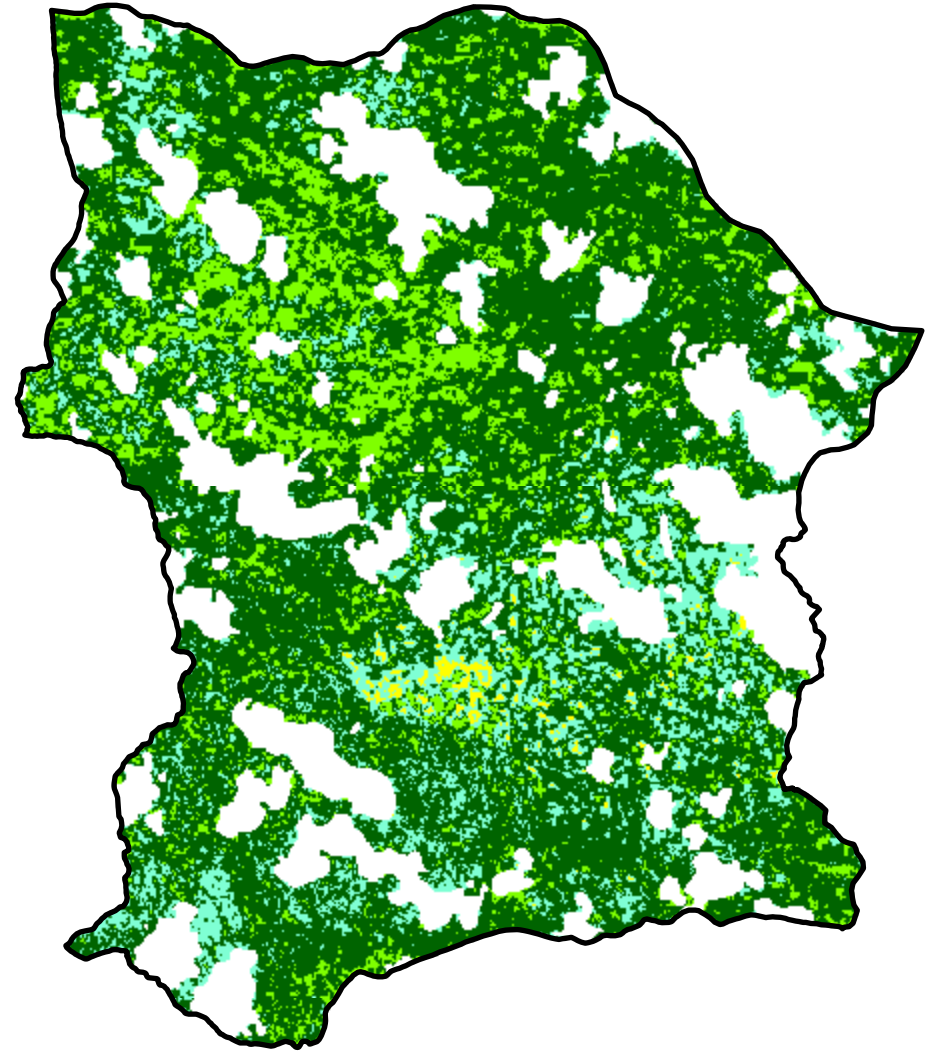
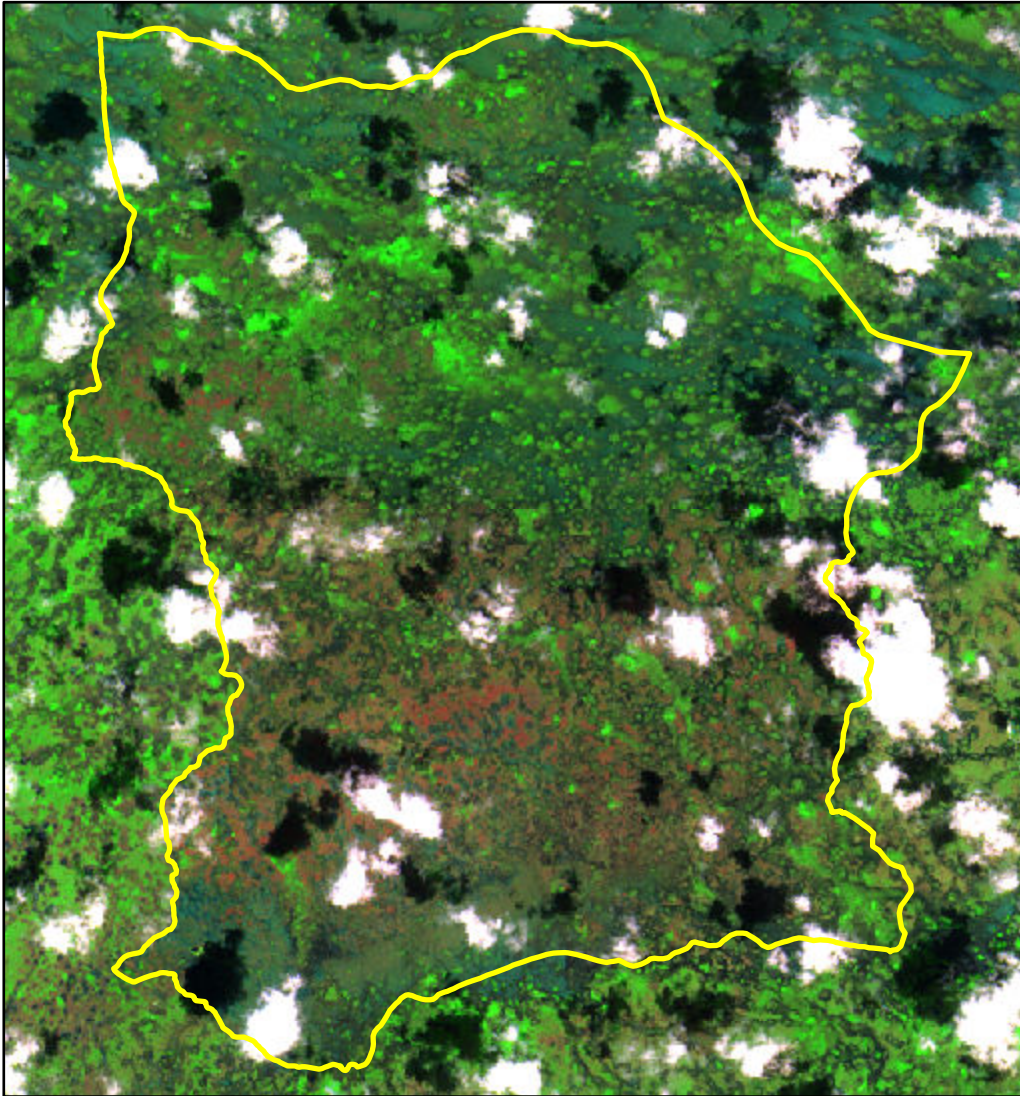


2024 Florida: BCP LOST DOG B/D RX 0228

fl2602708097020240228



Latitude: 26° 02' 16.8"
Longitude: -80° 59' 20.4"
Fire Ignition Date: February 28, 2024
Assessment Type: Initial
Pre-Fire Image Date: February 22, 2024 (S2A)
Post-Fire Image Date: March 13, 2024 (S2A)



This map portrays fire severity for the fire specified in the map title and summarizes proportions of fire severity classes. These data are produced under the National Burn Severity Mapping Project (NBSMP) jointly implemented by the USGS EROS and the NPS. The NBSMP ascertains the locations of fires based upon special requests from NPS staff members. The NBSMP reserves the right to correct, update or modify geospatial inputs to this map without notification.

* Areas in either the pre-fire or post-fire reflectance imagery containing clouds, snow, shadows, smoke, significantly sized water bodies, missing lines of image data, etc.

0 2 4
Miles

Acreage of Burn Severity

Burn Severity	Acres
Unburned to Low	39,642
Low	8,041
Moderate	424
High	0
Increased Greenness	9,405
Non-Processing Area Mask*	16,286
Total	73,797