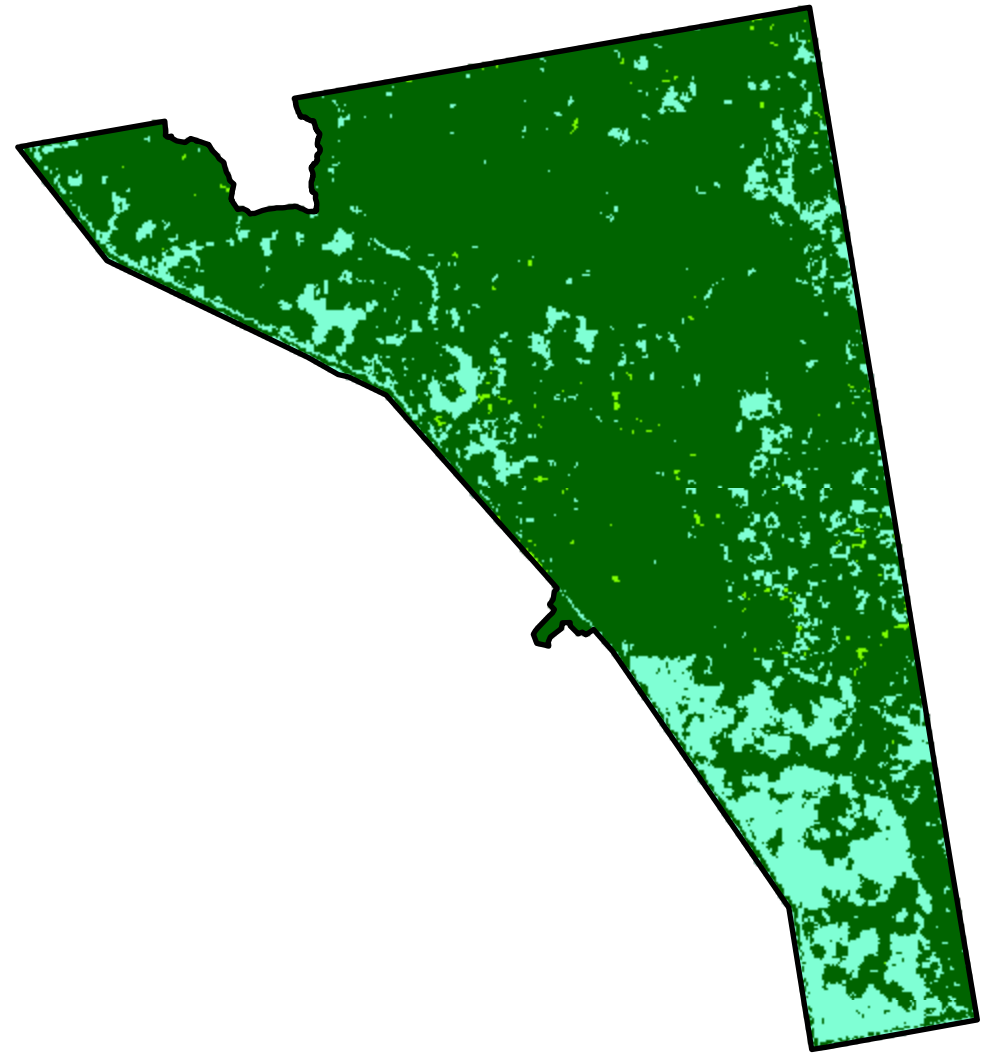
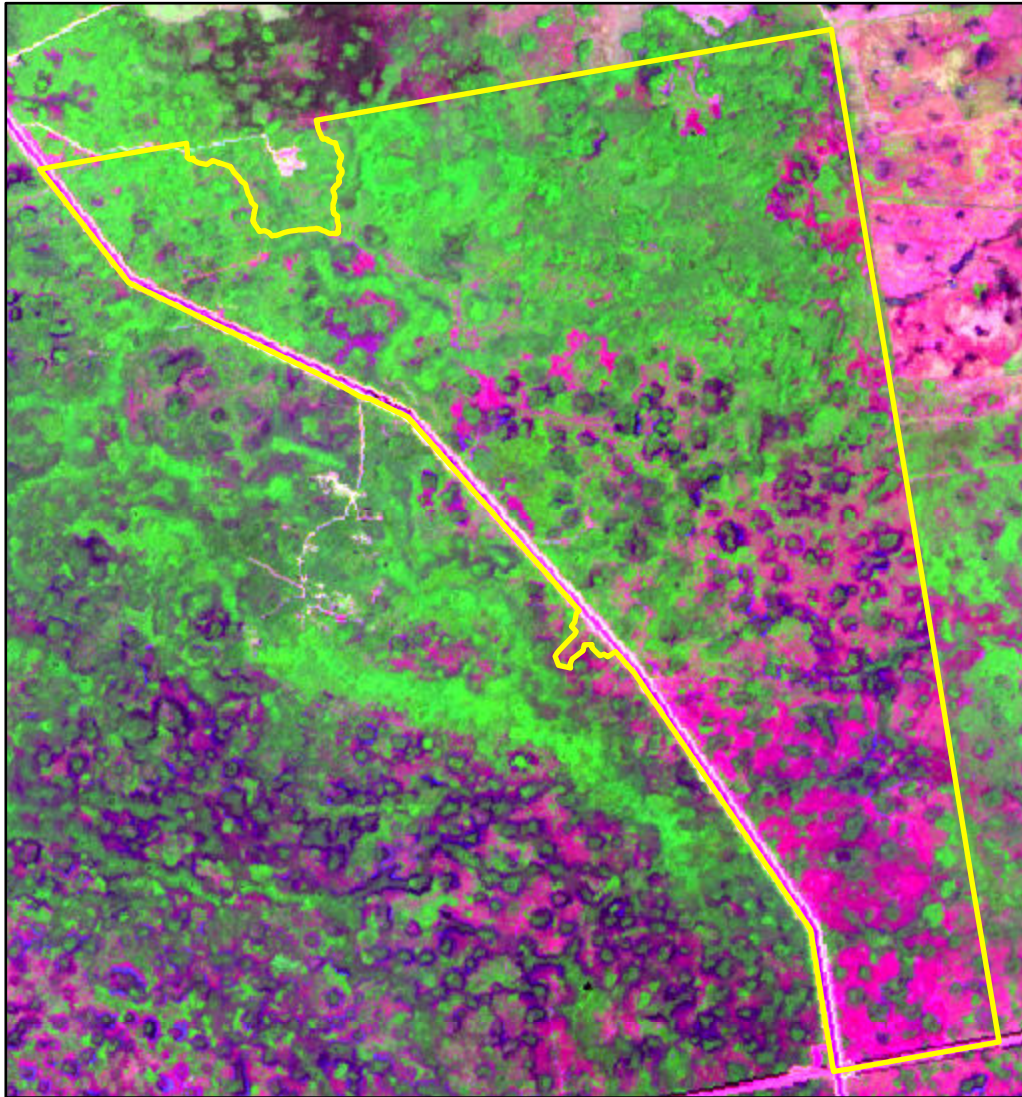


2024 Florida: BICY INTERCEPTOR RX FY24

fl2624208091220240313



Latitude: 26° 12' 57.6"
Longitude: -80° 55' 01.2"
Fire Ignition Date: March 13, 2024
Assessment Type: Initial
Pre-Fire Image Date: April 18, 2023 (S2A)
Post-Fire Image Date: April 12, 2024 (S2A)



This map portrays fire severity for the fire specified in the map title and summarizes proportions of fire severity classes. These data are produced under the National Burn Severity Mapping Project (NBSMP) jointly implemented by the USGS EROS and the NPS. The NBSMP ascertains the locations of fires based upon special requests from NPS staff members. The NBSMP reserves the right to correct, update or modify geospatial inputs to this map without notification.

* Areas in either the pre-fire or post-fire reflectance imagery containing clouds, snow, shadows, smoke, significantly sized water bodies, missing lines of image data, etc.

0 1 2
Miles

Acreage of Burn Severity

Burn Severity	Acres
Unburned to Low	15,999
Low	3,275
Moderate	0
High	0
Increased Greenness	80
Non-Processing Area Mask*	0
Total	19,353