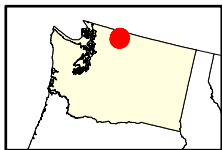
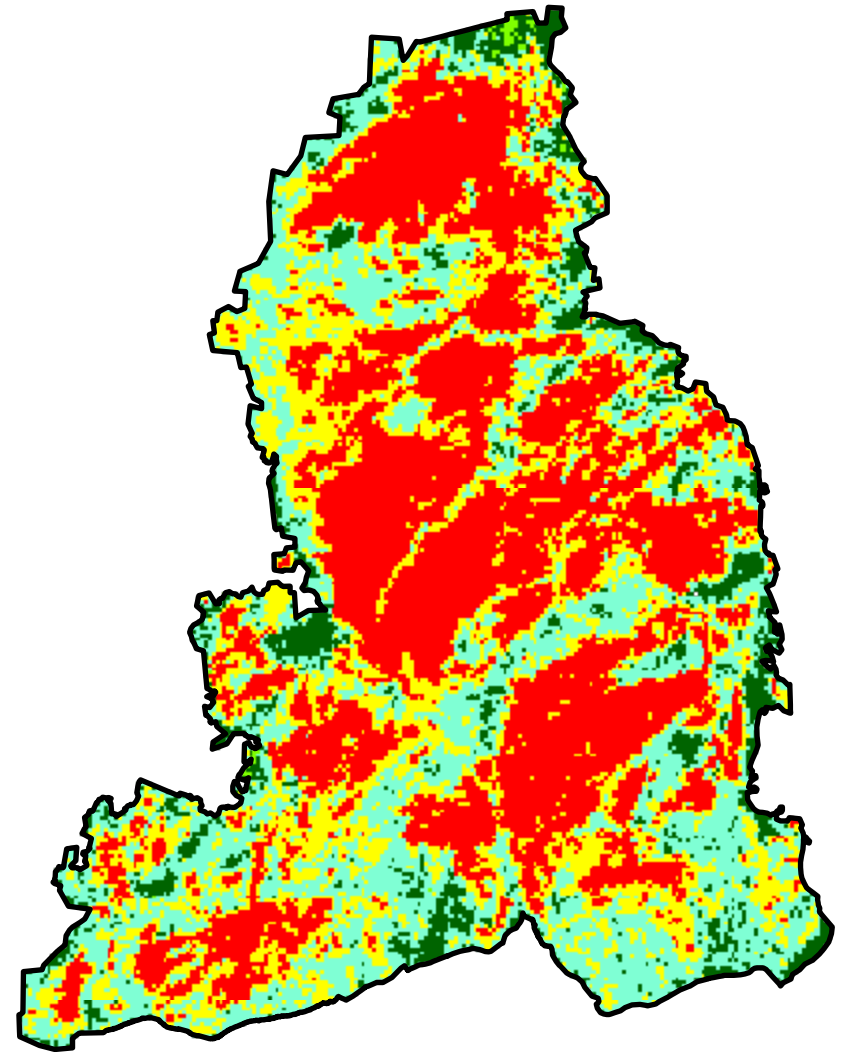
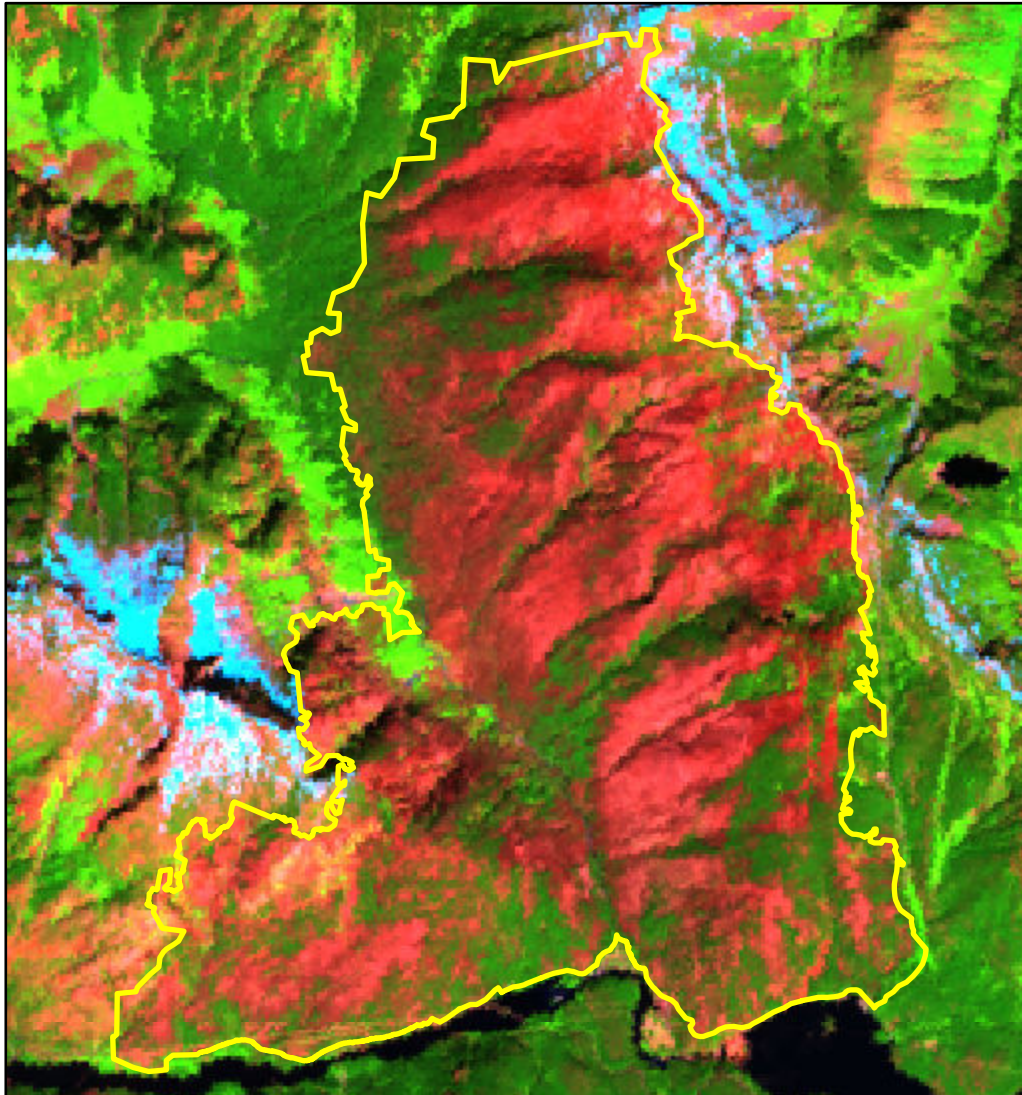


# 2023 Washington: SOURDOUGH

wa4872212113620230729



Latitude: 48° 44' 34.8"  
Longitude: -121° 09' 25.2"  
Fire Ignition Date: July 29, 2023  
Assessment Type: Extended  
Pre-Fire Image Date: July 15, 2023 (L8)  
Post-Fire Image Date: July 09, 2024 (L9)



This map portrays fire severity for the fire specified in the map title and summarizes proportions of fire severity classes. These data are produced under the Monitoring Trends in Burn Severity (MTBS) program jointly implemented by the USGS EROS and the USFS GTAC. The MTBS program ascertains the locations of fires based on available fire occurrence information provided by federal and state agencies, and other reliable sources. The MTBS program reserves the right to correct, update or modify geospatial inputs to this map without notification.

\* Areas in either the pre-fire or post-fire reflectance imagery containing clouds, snow, shadows, smoke, significantly sized water bodies, missing lines of image data, etc.

0 1 2 Miles

## Acreage of Burn Severity

Burn Severity	Acres
Unburned to Low	578
Low	2,030
Moderate	1,889
High	2,942
Increased Greenness	19
Non-Processing Area Mask*	0
<b>Total</b>	<b>7,458</b>