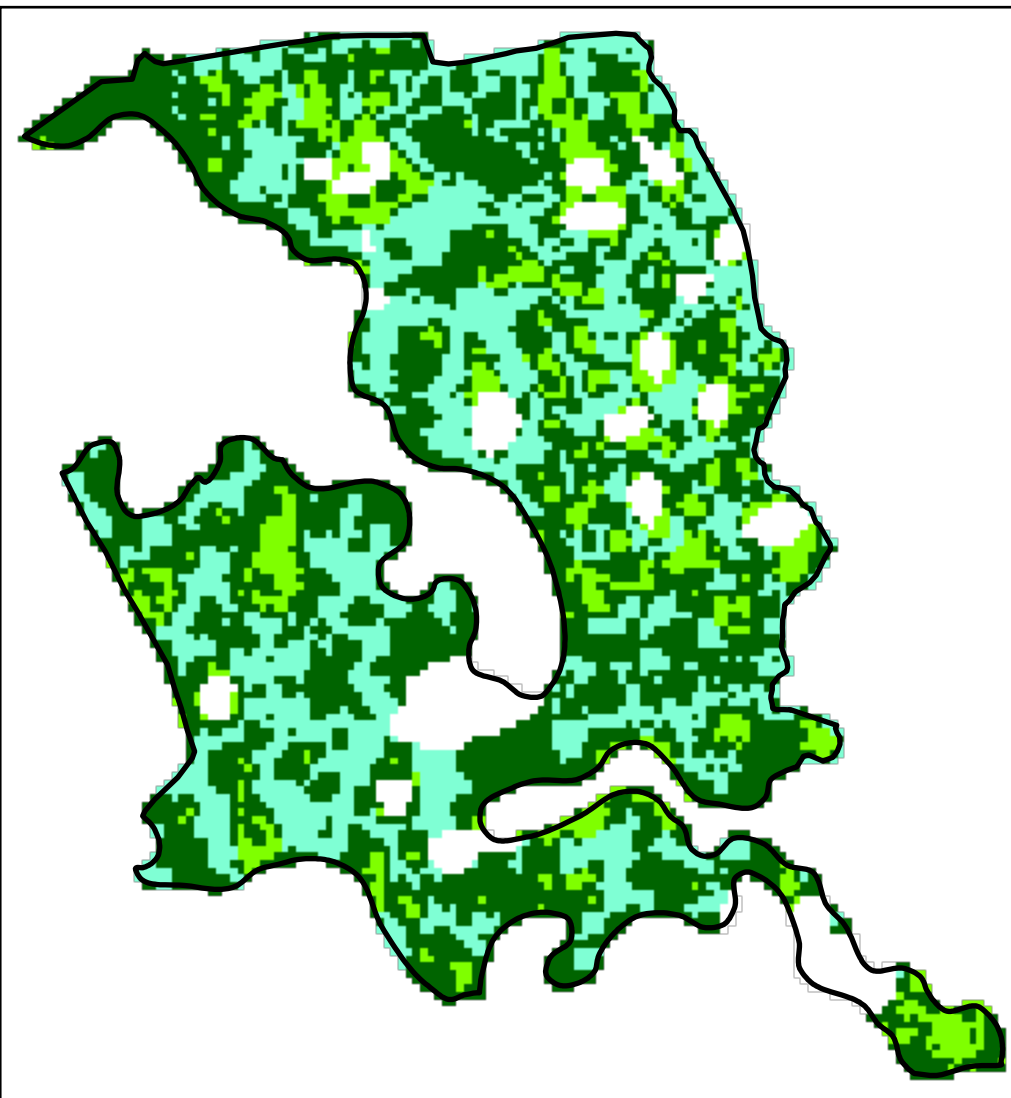
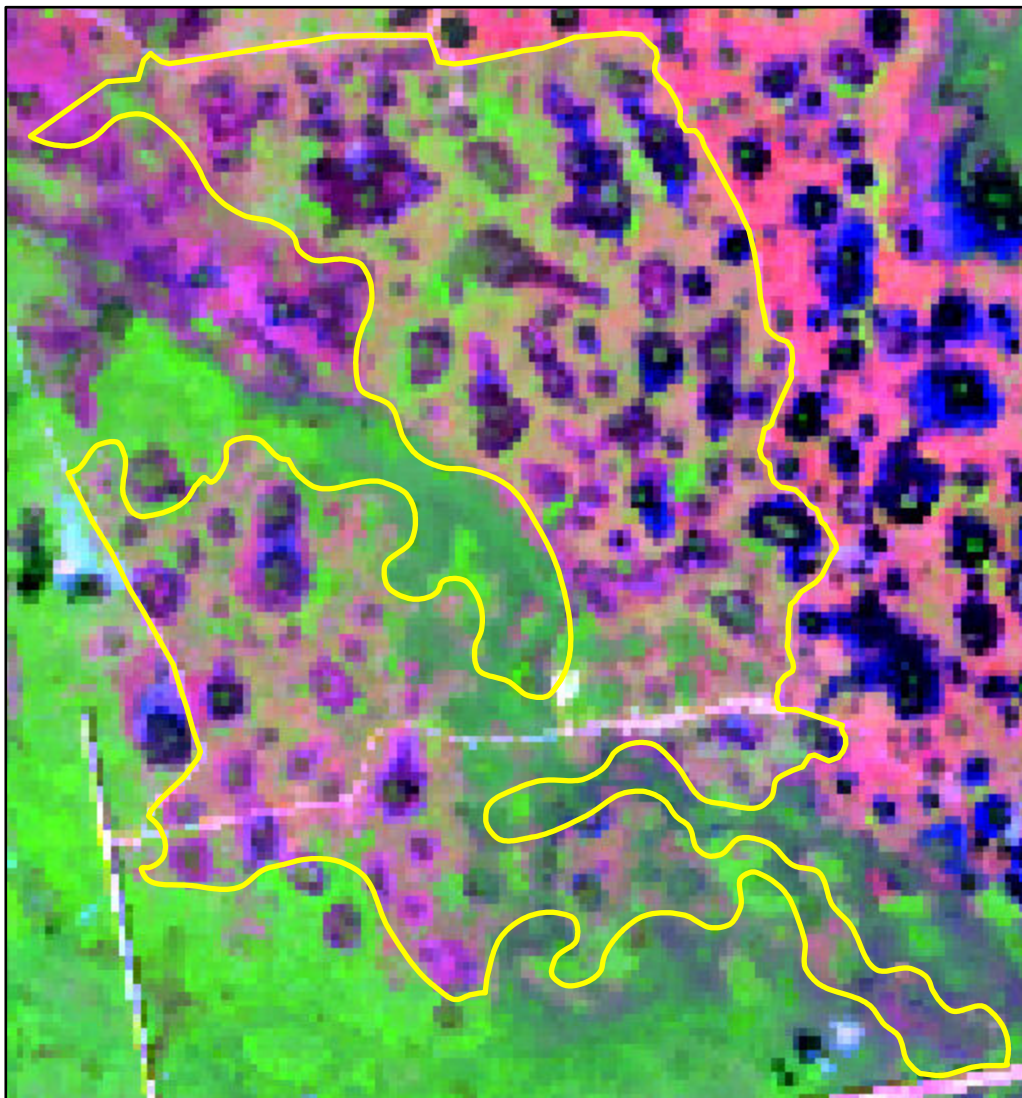


# 2023 Florida: BICY PEROCCHI C RX FY23

fl2618208125220230207



Latitude: 26° 11' 16.8"  
Longitude: -81° 14' 56.4"  
Fire Ignition Date: February 07, 2023  
Assessment Type: Extended  
Pre-Fire Image Date: July 04, 2021 (S2A)  
Post-Fire Image Date: July 04, 2023 (S2A)



## Acreage of Burn Severity

Burn Severity	Acres
Unburned to Low	923
Low	604
Moderate	0
High	0
Increased Greenness	218
Non-Processing Area Mask*	160
<b>Total</b>	<b>1,906</b>

This map portrays fire severity for the fire specified in the map title and summarizes proportions of fire severity classes. These data are produced under the National Burn Severity Mapping Project (NBSMP) jointly implemented by the USGS EROS and the NPS. The NBSMP ascertains the locations of fires based upon special requests from NPS staff members. The NBSMP reserves the right to correct, update or modify geospatial inputs to this map without notification.

\* Areas in either the pre-fire or post-fire reflectance imagery containing clouds, snow, shadows, smoke, significantly sized water bodies, missing lines of image data, etc.

0 0.65 1.3  
Miles