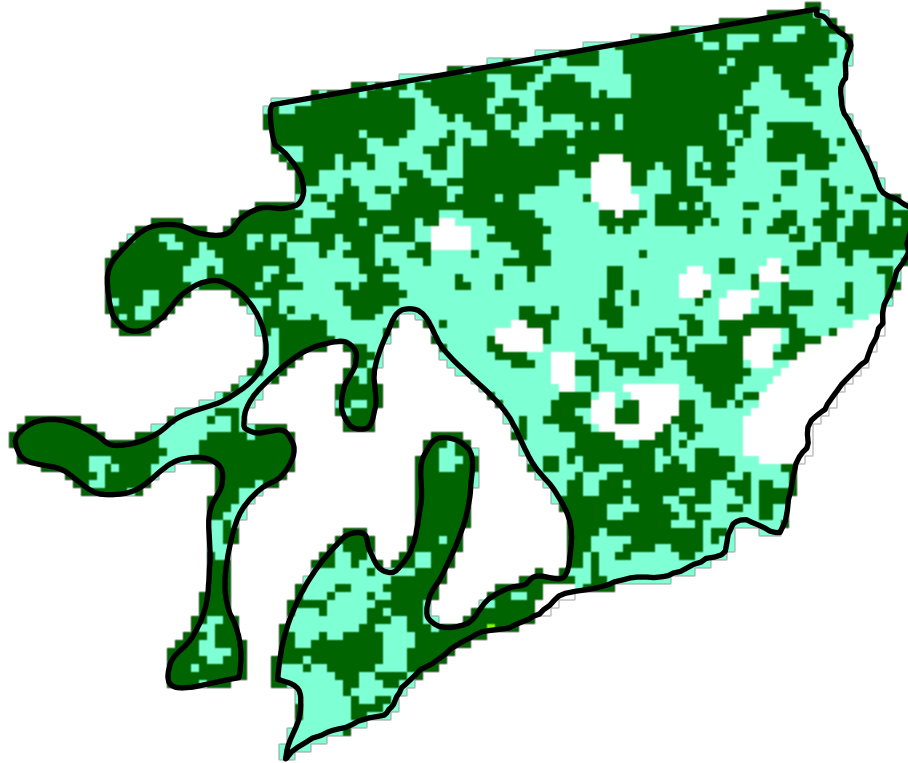
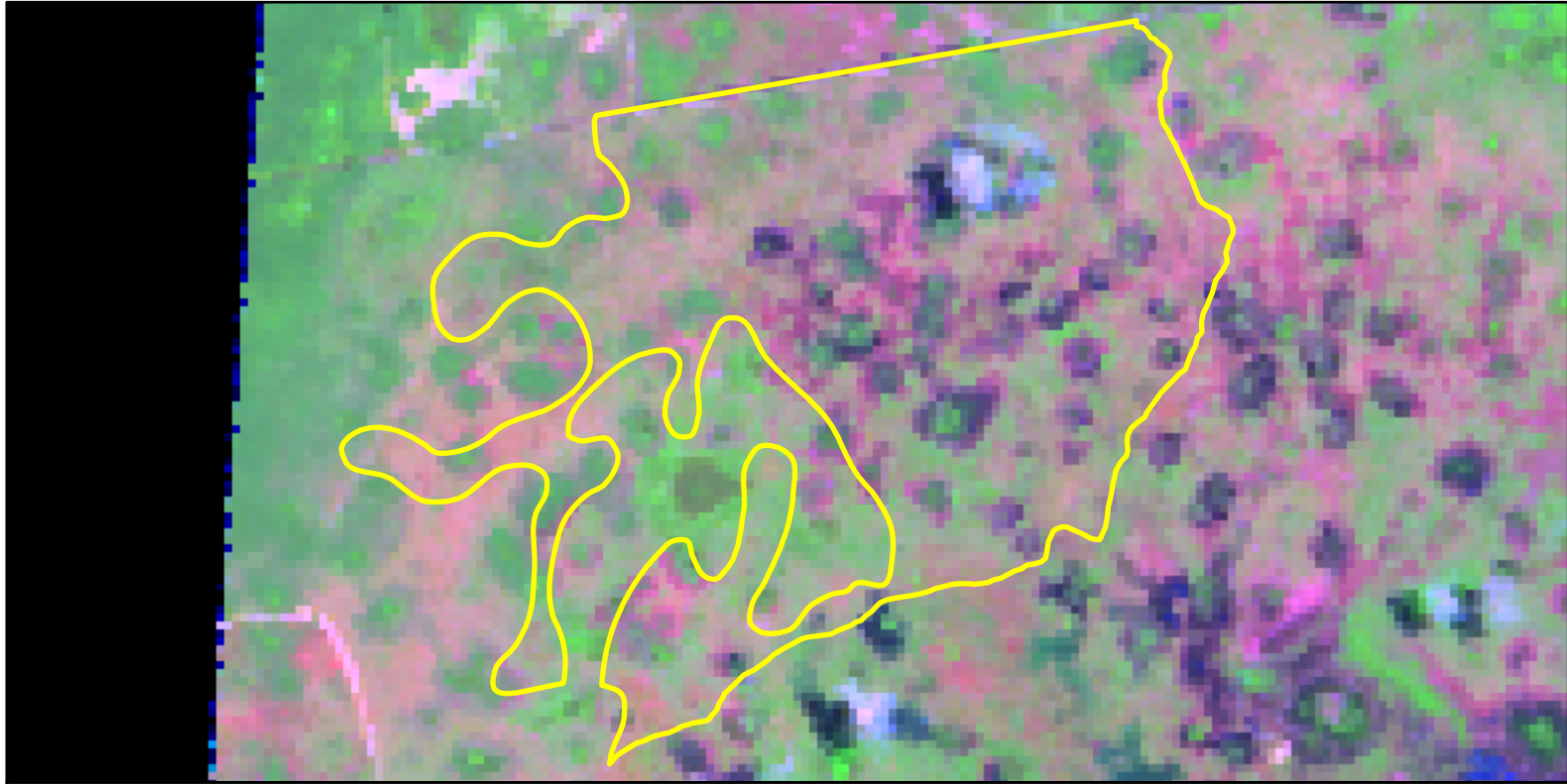


# 2023 Florida: BICY PEROCCHI A RX FY23

fl2624808125720230130



Latitude: 26° 14' 34.8"  
Longitude: -81° 14' 52.8"  
Fire Ignition Date: January 30, 2023  
Assessment Type: Extended  
Pre-Fire Image Date: July 09, 2022 (S2A)  
Post-Fire Image Date: July 04, 2023 (S2A)



This map portrays fire severity for the fire specified in the map title and summarizes proportions of fire severity classes. These data are produced under the National Burn Severity Mapping Project (NBSMP) jointly implemented by the USGS EROS and the NPS. The NBSMP ascertains the locations of fires based upon special requests from NPS staff members. The NBSMP reserves the right to correct, update or modify geospatial inputs to this map without notification.

\* Areas in either the pre-fire or post-fire reflectance imagery containing clouds, snow, shadows, smoke, significantly sized water bodies, missing lines of image data, etc.

0 0.55 1.1 Miles

## Acreage of Burn Severity

| Burn Severity             | Acres        |
|---------------------------|--------------|
| Unburned to Low           | 526          |
| Low                       | 460          |
| Moderate                  | 0            |
| High                      | 0            |
| Increased Greenness       | 0            |
| Non-Processing Area Mask* | 77           |
| <b>Total</b>              | <b>1,062</b> |