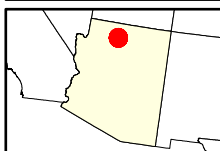
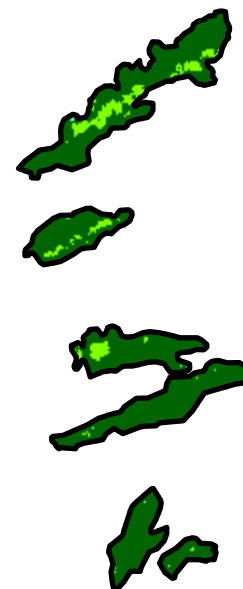
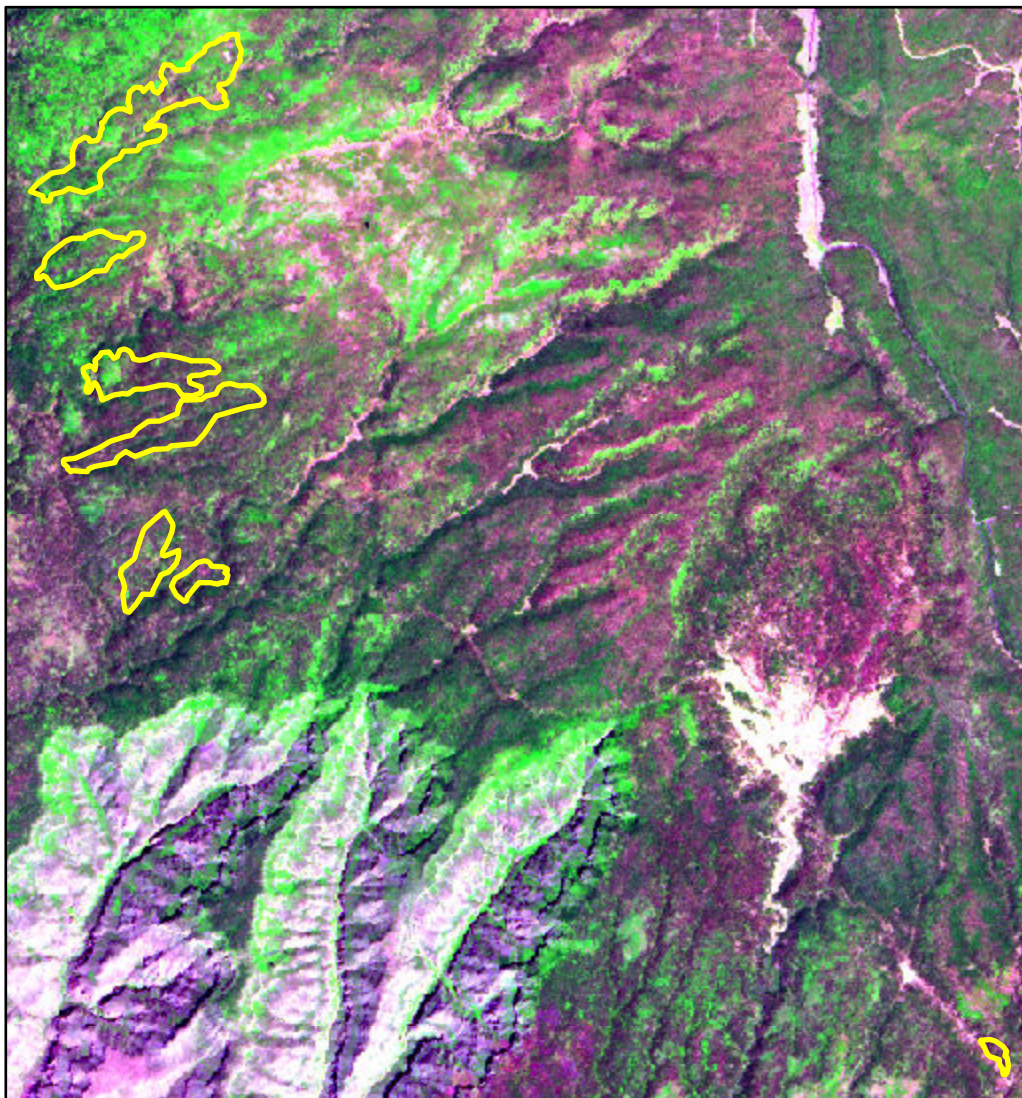


2022 Arizona: FY22 GRCA WILDLAND FIRES - MULTIPLE OBJECTIVES

az3634911228520220717



Latitude: 36° 16' 44.4"
Longitude: -112° 08' 38.4"
Fire Ignition Date: July 17, 2022
Assessment Type: Extended
Pre-Fire Image Date: June 16, 2022 (S2B)
Post-Fire Image Date: July 16, 2023 (S2A)



This map portrays fire severity for the fire specified in the map title and summarizes proportions of fire severity classes. These data are produced under the National Burn Severity Mapping Project (NBSMP) jointly implemented by the USGS EROS and the NPS. The NBSMP ascertains the locations of fires based upon special requests from NPS staff members. The NBSMP reserves the right to correct, update or modify geospatial inputs to this map without notification.

* Areas in either the pre-fire or post-fire reflectance imagery containing clouds, snow, shadows, smoke, significantly sized water bodies, missing lines of image data, etc.

0 2 4
Miles

Acreage of Burn Severity	
Burn Severity	Acres
Unburned to Low	2,044
Low	4
Moderate	0
High	0
Increased Greenness	168
Non-Processing Area Mask*	0
Total	2,217