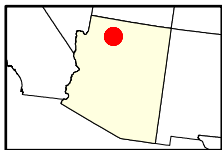
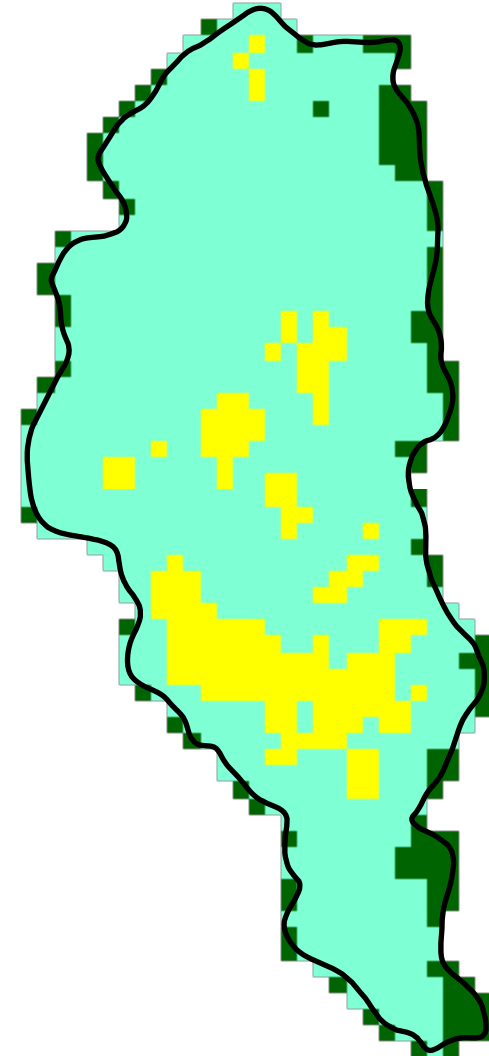
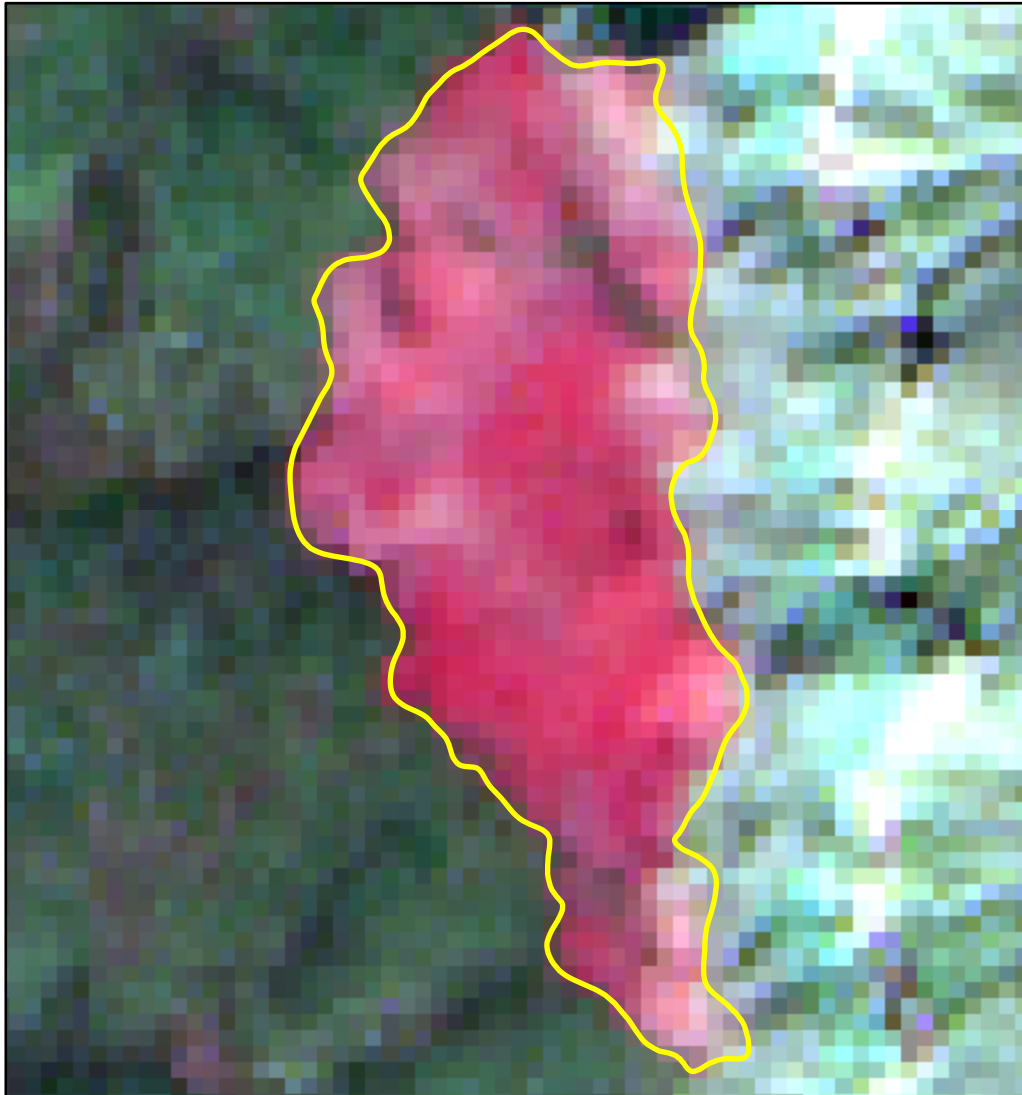


2022 Arizona: AZTEC/HAVASUPAI RES-BIA

az3617311248220220721



Latitude: 36° 10' 22.8"
Longitude: -112° 28' 44.4"
Fire Ignition Date: July 21, 2022
Assessment Type: Extended
Pre-Fire Image Date: June 21, 2022 (S2A)
Post-Fire Image Date: June 26, 2023 (S2A)



This map portrays fire severity for the fire specified in the map title and summarizes proportions of fire severity classes. These data are produced under the National Burn Severity Mapping Project (NBSMP) jointly implemented by the USGS EROS and the NPS. The NBSMP ascertains the locations of fires based upon special requests from NPS staff members. The NBSMP reserves the right to correct, update or modify geospatial inputs to this map without notification.

* Areas in either the pre-fire or post-fire reflectance imagery containing clouds, snow, shadows, smoke, significantly sized water bodies, missing lines of image data, etc.

0 0.15 0.3
Miles

Acreage of Burn Severity

Burn Severity	Acres
Unburned to Low	13
Low	192
Moderate	33
High	0
Increased Greenness	0
Non-Processing Area Mask*	0
Total	239