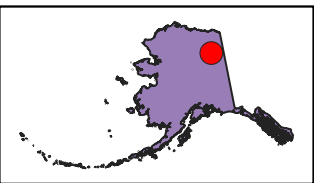
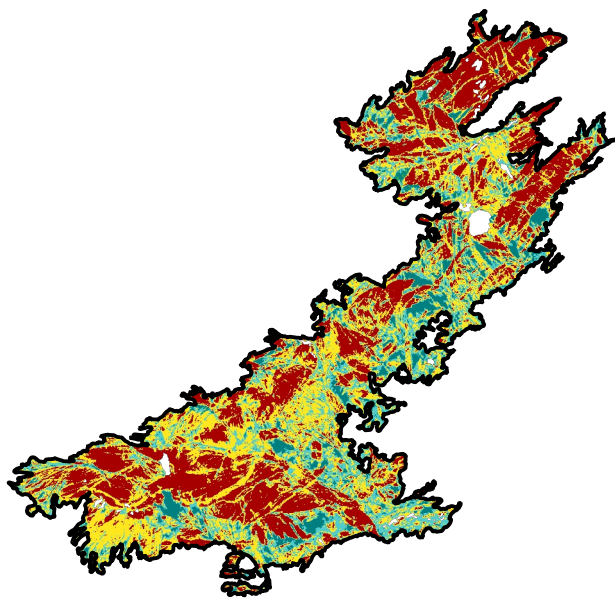
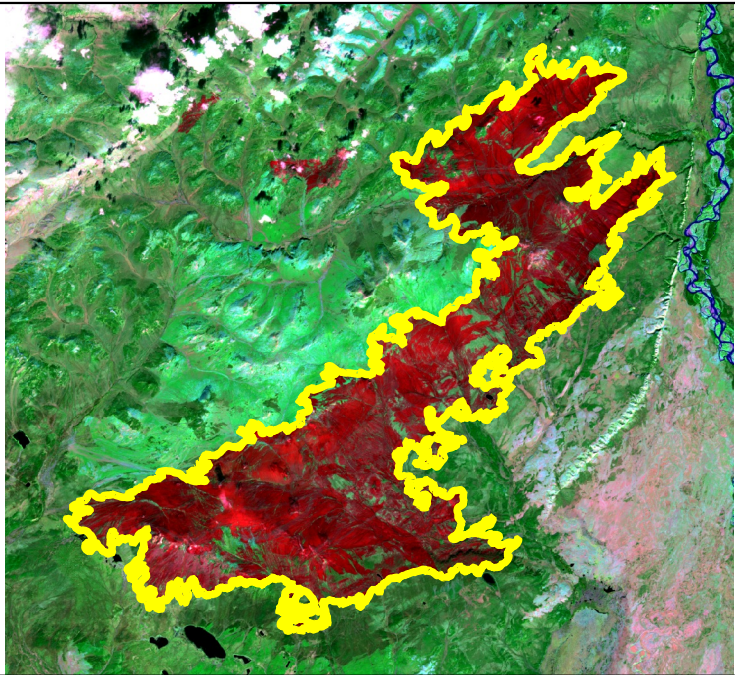


2025 Alaska: CHRISTIAN

ak6734114480820250620



Latitude: 67 20 27.6
Longitude: -144 48 28.8
Fire Ignition Date: June 20, 2025
Assessment Type: Initial
Pre-Fire Image Date: 2024-09-04 (L8)
Post-Fire Image Date: 2025-09-07 (L8)

This map portrays fire severity for the fire specified in the map title and summarizes proportions of fire severity classes. These data are produced under the Provisional Initial Assessment (PIA) program jointly implemented by the USGS EROS and the USFS GTAC. The PIA program ascertains the locations of fires based on available fire occurrence information provided by federal and state agencies, and other reliable sources. The PIA program reserves the right to correct, update or modify geospatial inputs to this map without notification.

* Areas in either the pre-fire or post-fire reflectance imagery containing clouds, snow, shadows, smoke, significantly sized water bodies, missing lines of image data, etc.

0 5 10 Miles



Acreage of Burn Severity	
Burn Severity	Acres
Unburned to Low	4,950
Low	13,522
Moderate	22,933
High	21,736
Increased Greenness	44
Mask Area*	849
Total	64,034

