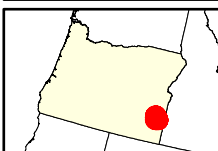
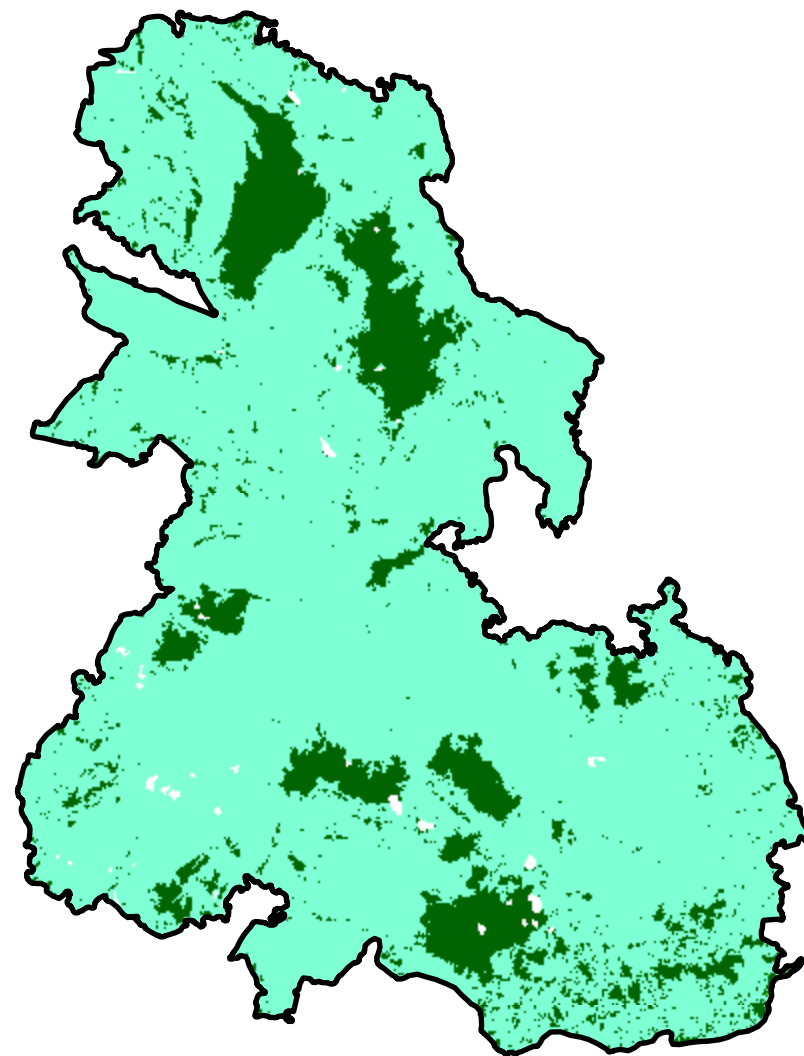
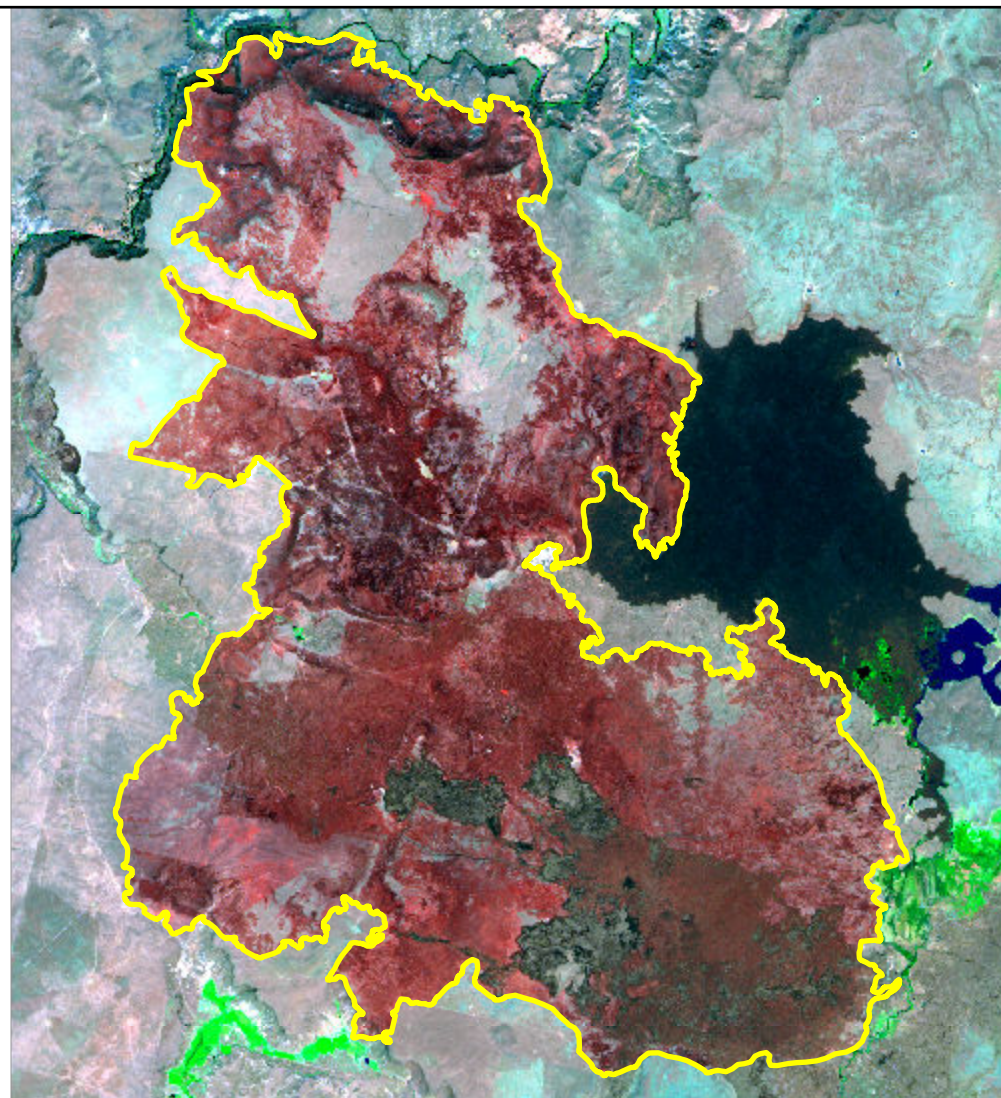


2024 Oregon: HOLE IN THE GROUND

or4319711760920240725



Latitude: 43° 04' 44.4"
Longitude: -117° 29' 49.2"
Fire Ignition Date: July 25, 2024
Assessment Type: Initial
Pre-Fire Image Date: July 09, 2024 (S2A)
Post-Fire Image Date: August 18, 2024 (S2A)



This map portrays fire severity for the fire specified in the map title and summarizes proportions of fire severity classes. These data are produced under the Monitoring Trends in Burn Severity (MTBS) program jointly implemented by the USGS EROS and the USFS GTAC. The MTBS program ascertains the locations of fires based on available fire occurrence information provided by federal and state agencies, and other reliable sources. The MTBS program reserves the right to correct, update or modify geospatial inputs to this map without notification.

* Areas in either the pre-fire or post-fire reflectance imagery containing clouds, snow, shadows, smoke, significantly sized water bodies, missing lines of image data, etc.

0 4.5 9
Miles

Acreage of Burn Severity

| Burn Severity | Acres |
|---------------------------|---------------|
| Unburned to Low | 14,107 |
| Low | 83,527 |
| Moderate | 0 |
| High | 0 |
| Increased Greenness | 1 |
| Non-Processing Area Mask* | 420 |
| Total | 98,055 |