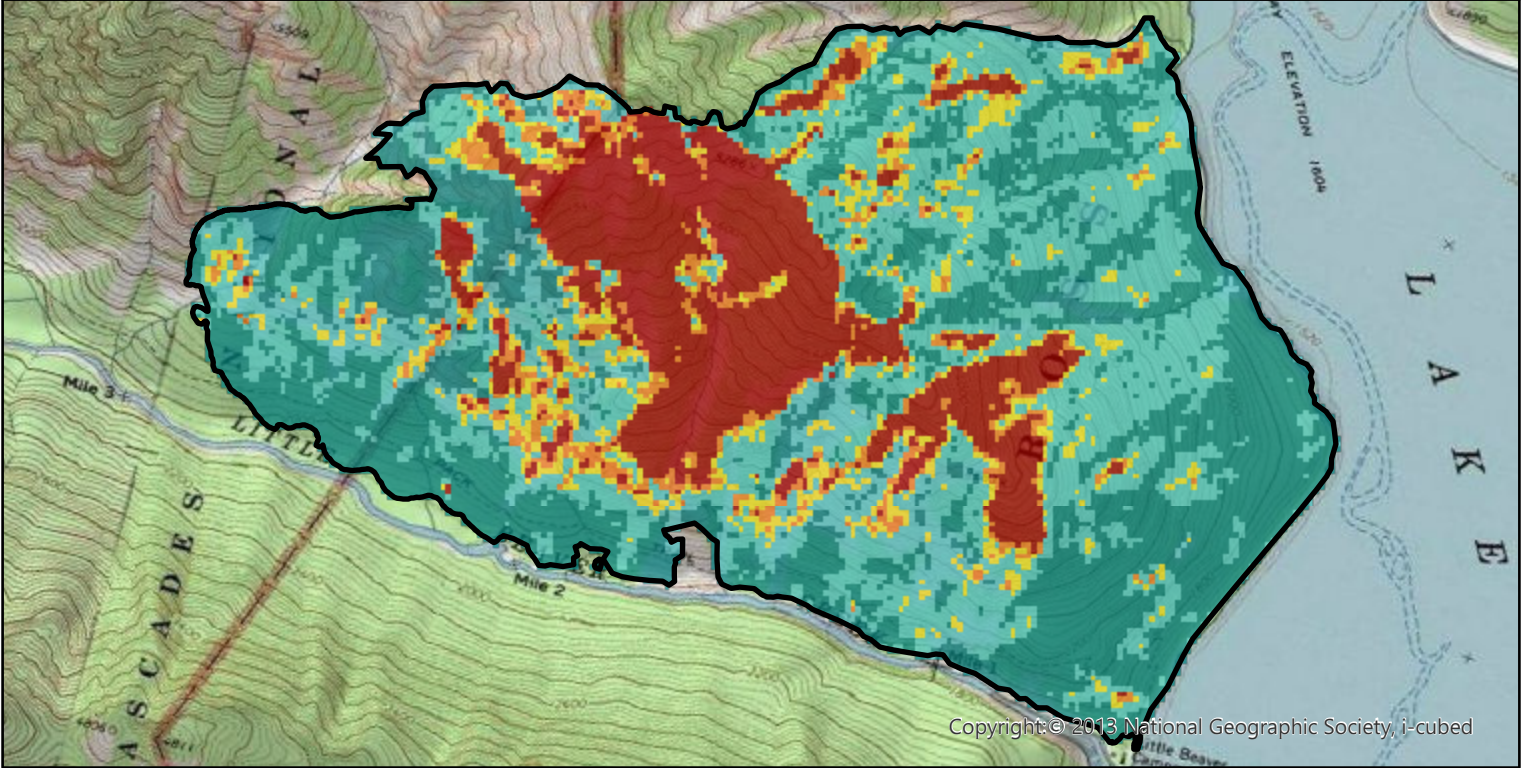
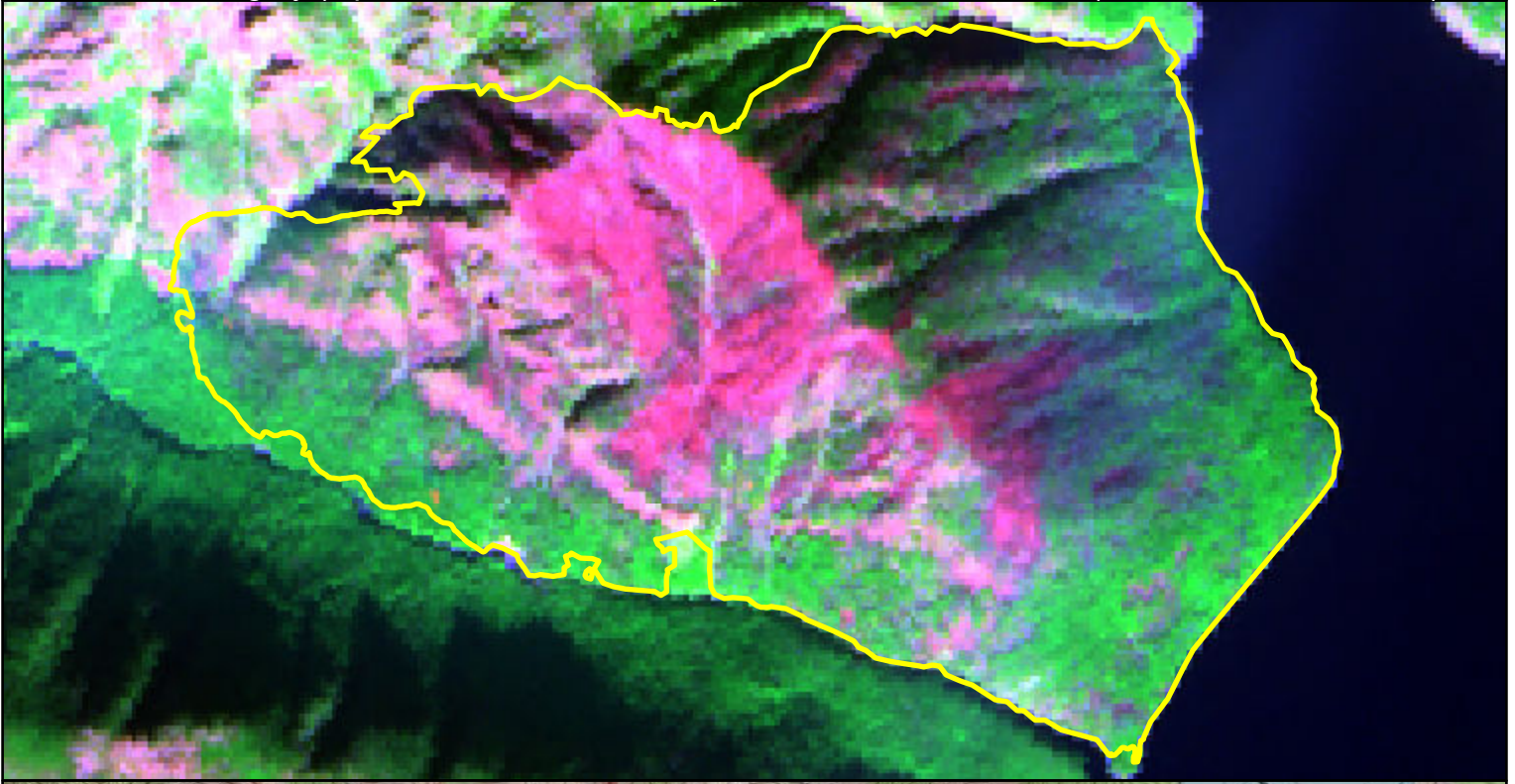
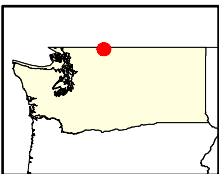


2025 PERRY Fire (WA4892312110520250828)

Post-fire imagery (top, 2025-09-18, Sentinel-2) and modeled RAVG data (bottom, PRELIMINARY)



Copyright © 2013 National Geographic Society, i-cubed



0 0.45 0.9 Miles

- Burn Area Boundary
- FS Wilderness
- Non-FS Land

Canopy Cover Mortality

- 0%
- >0% - <25%
- 25% - <50%
- 50% - <75%
- 75% - 100%
- Masked

Model used: National



Rapid Assessment of Vegetation Condition after Wildfire map produced by the US Geological Survey Earth Resources Observation and Science Center. For more information or to contact us visit <https://burnseverity.cr.usgs.gov/products/ravg> or <https://burnseverity.cr.usgs.gov/contact>.