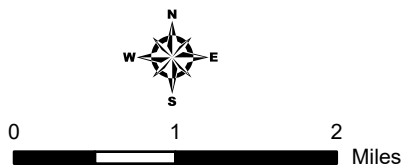
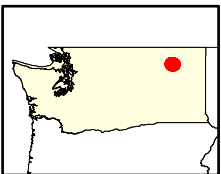
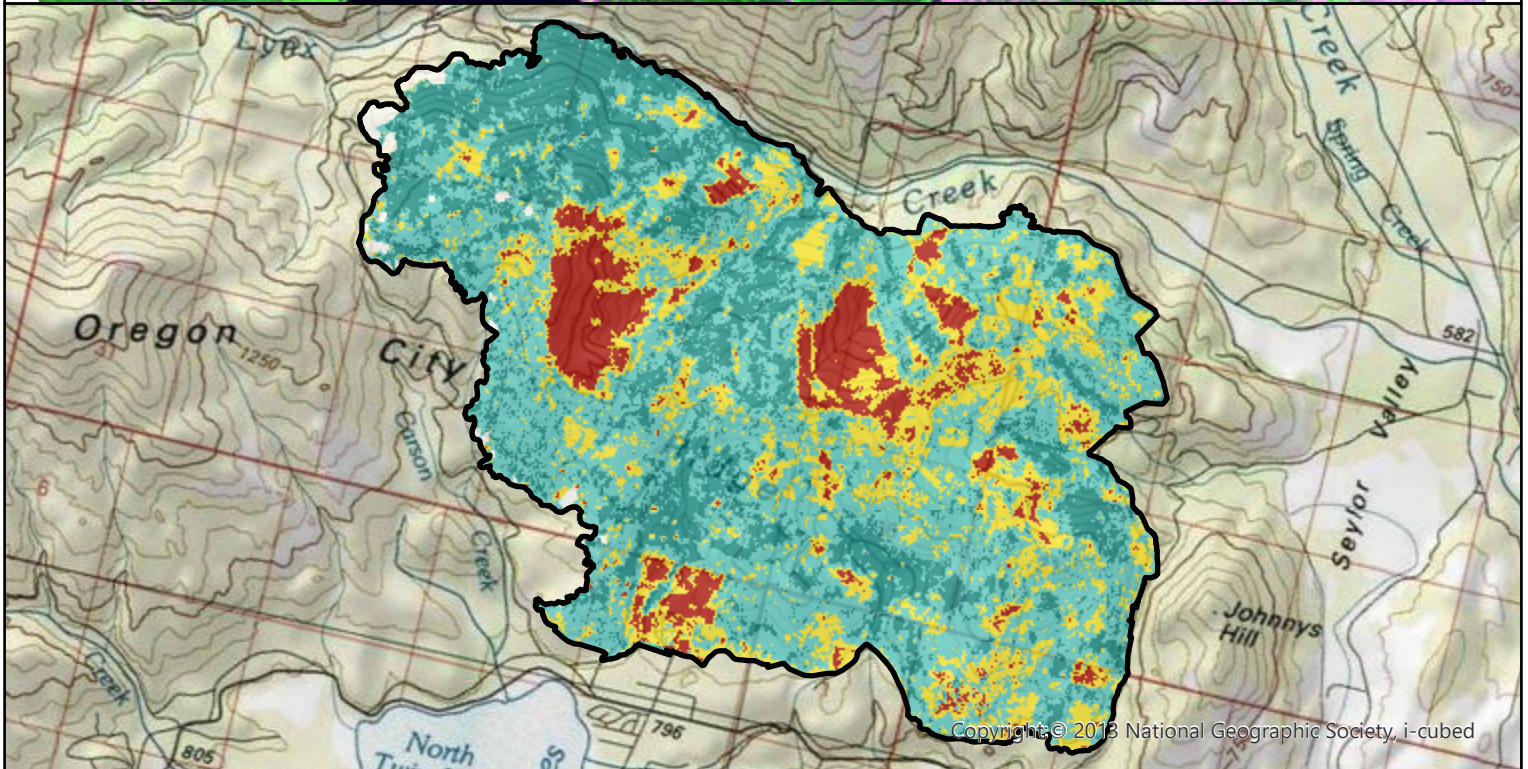
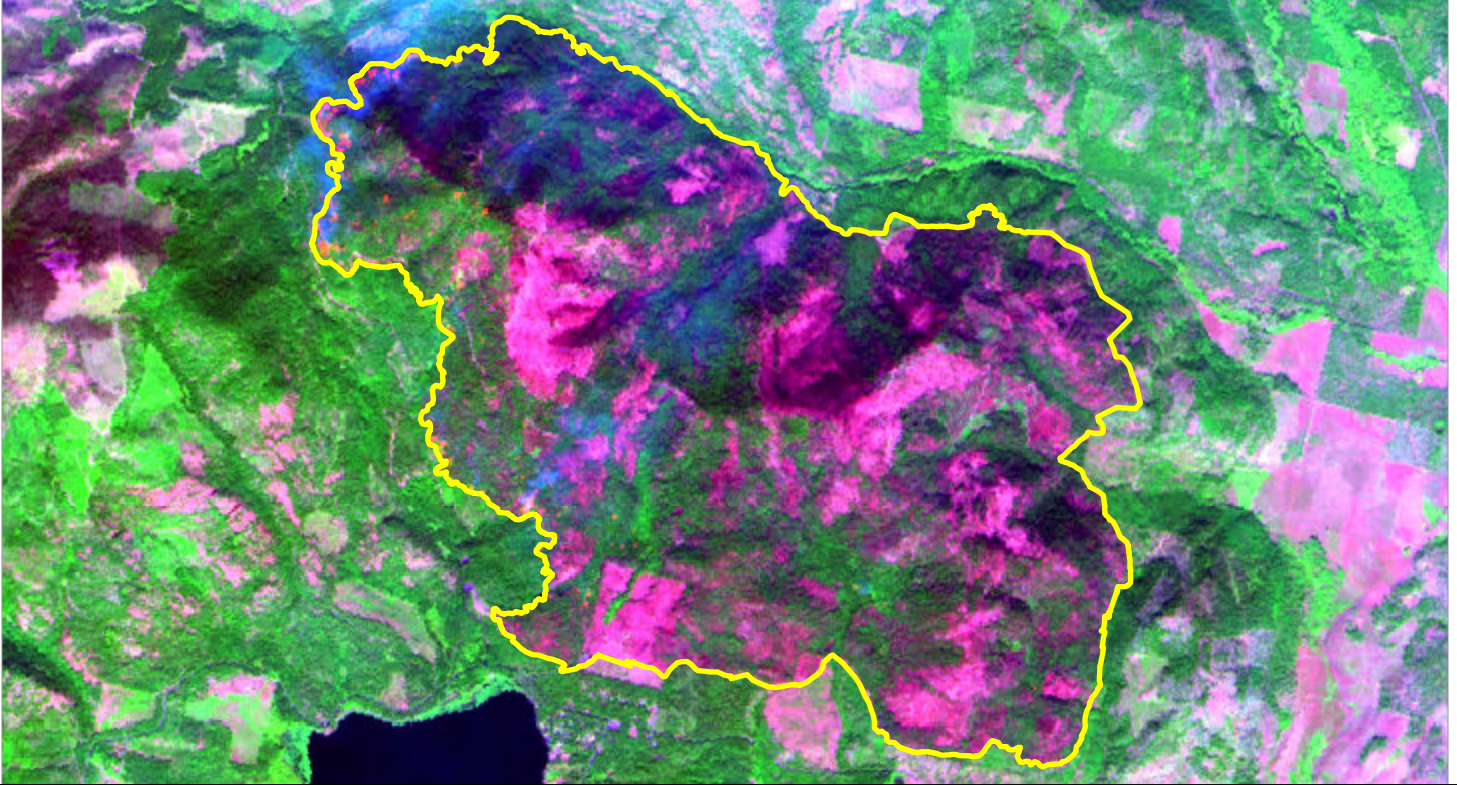


# 2025 LYNX MOUNTAIN Fire (WA4834011834120250902)

Post-fire imagery (top, 2025-09-20, Sentinel-2) and modeled RAVG data (bottom, PRELIMINARY)



- Burn Area Boundary
- FS Wilderness
- Non-FS Land

## Composite Burn Index (CBI)

- Unchanged
- Low Severity
- Moderate Severity
- High Severity
- Masked

Model used: National



Rapid Assessment of Vegetation Condition after Wildfire map produced by the US Geological Survey Earth Resources Observation and Science Center. For more information or to contact us visit <https://burnseverity.cr.usgs.gov/products/ravg> or <https://burnseverity.cr.usgs.gov/contact>.