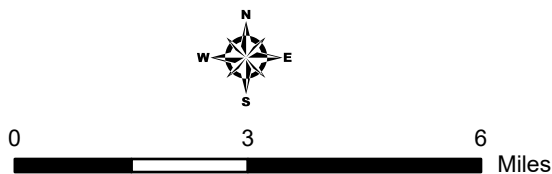
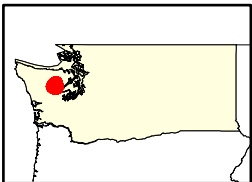
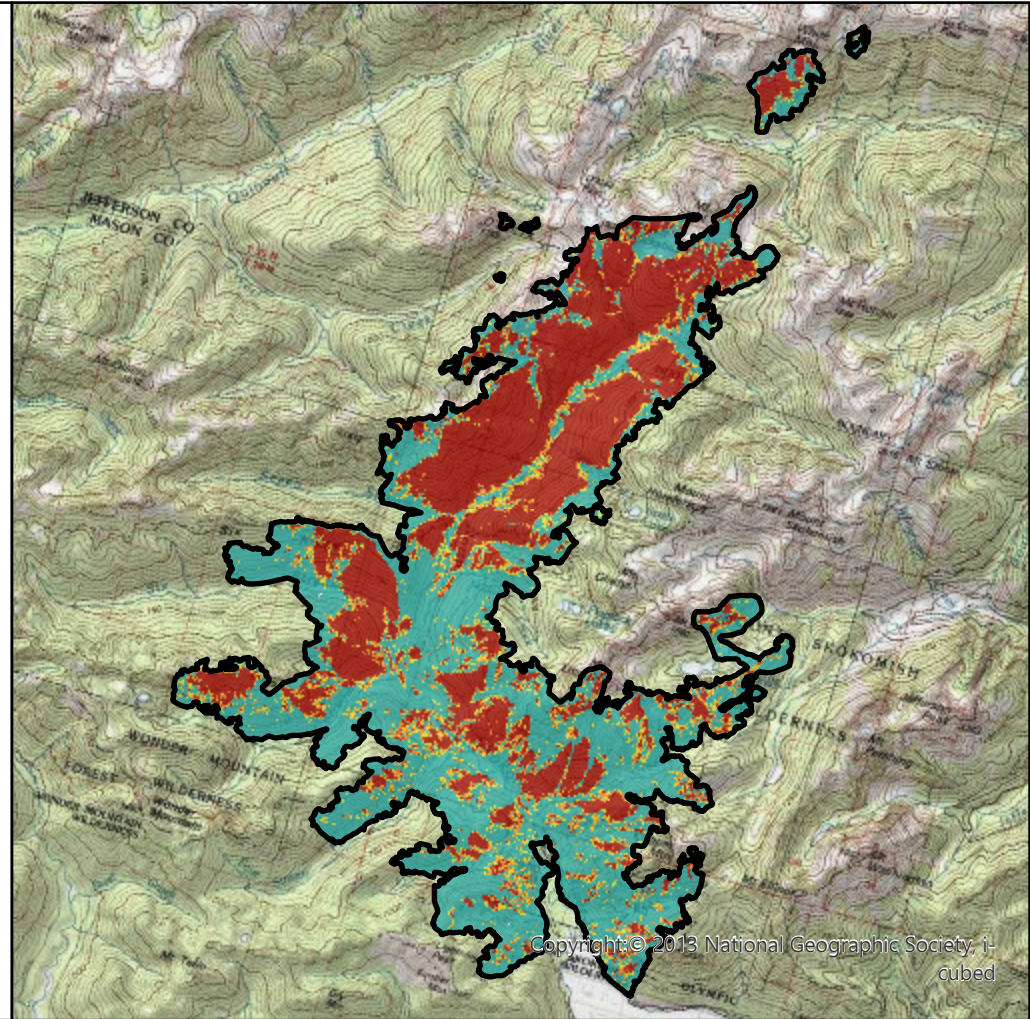
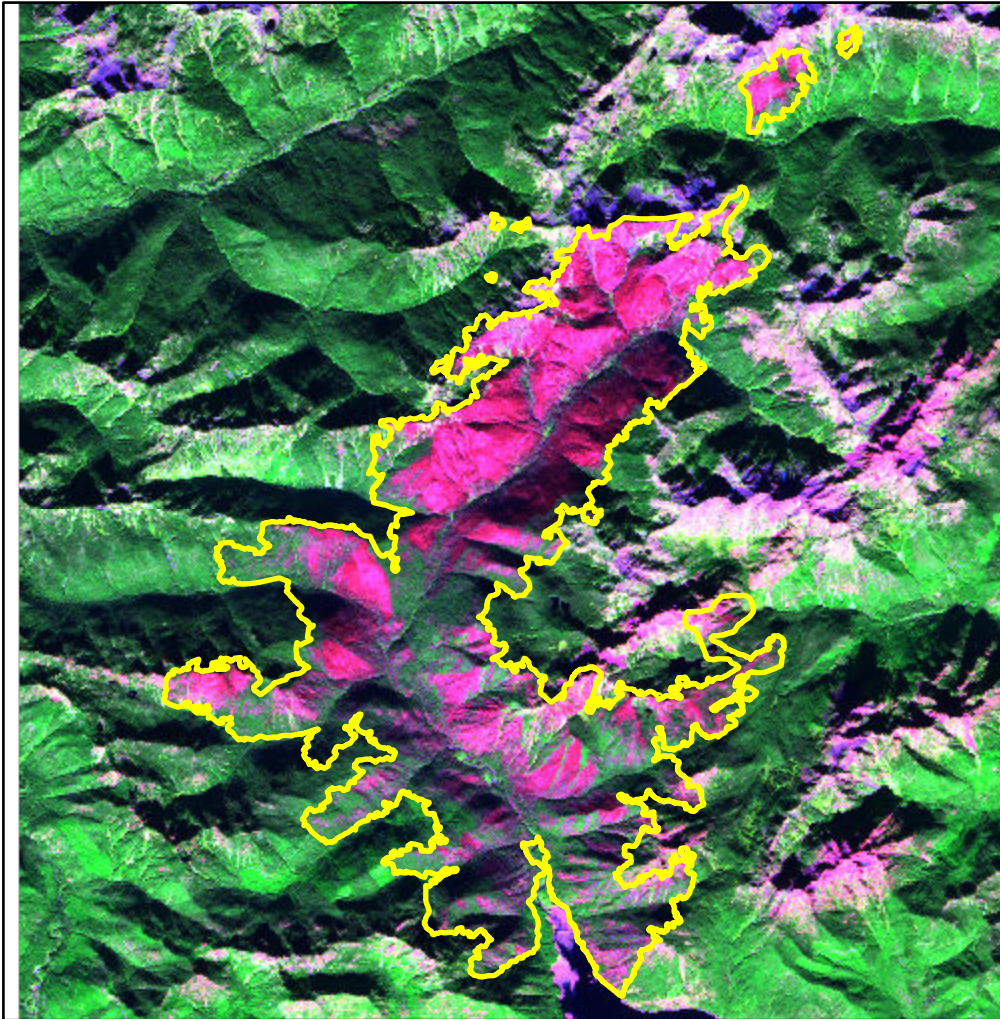


2025 BEAR GULCH Fire (WA4749612330220250707)

Post-fire imagery (left, 2025-10-06, Sentinel-2) and modeled RAVG data (right, PRELIMINARY)



- Burn Area Boundary
- FS Wilderness
- Non-FS Land

Live Basal Area Loss

- 0% - <25%
- 25% - <50%
- 50% - <75%
- 75% - 100%
- Masked

Model used: National



Rapid Assessment of Vegetation Condition after Wildfire map produced by the US Geological Survey Earth Resources Observation and Science Center. For more information, visit <https://burnseverity.cr.usgs.gov/products/ravg> or contact us at <https://burnseverity.cr.usgs.gov/contact>.