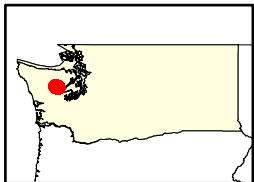
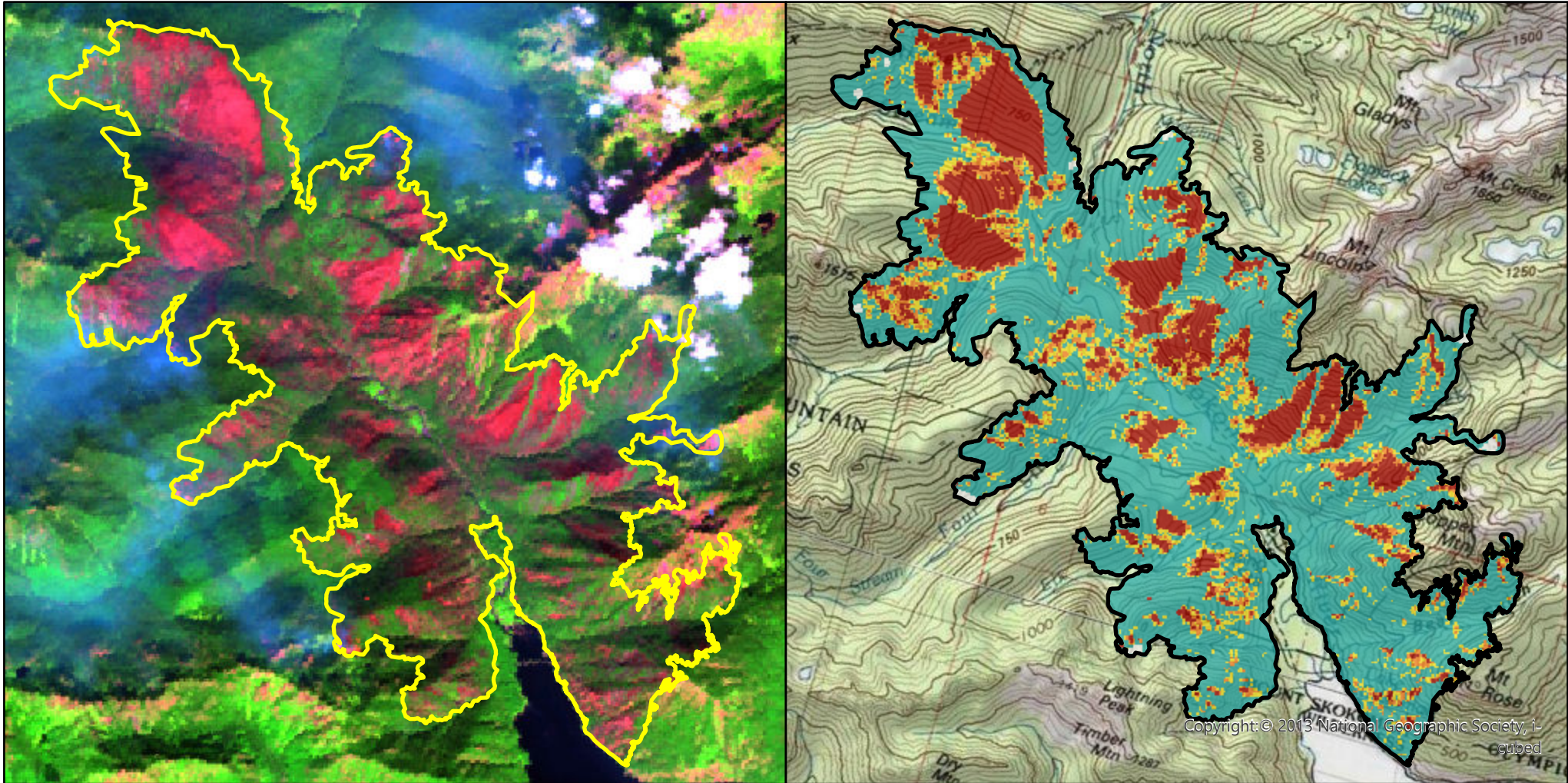


# 2025 BEAR GULCH Fire (WA4749612330220250707)

Post-fire imagery (left, 2025-08-28, Landsat) and modeled RAVG data (right, PRELIMINARY)



0 1.5 3 Miles



Burn Area Boundary



FS Wilderness



Non-FS Land

Live Basal Area Loss

0% - <25%

25% - <50%

50% - <75%

75% - 100%

Masked

Model used: National



USGS



Rapid Assessment of Vegetation Condition after Wildfire map produced by the US Geological Survey Earth Resources Observation and Science Center. For more information, visit <https://burnseverity.cr.usgs.gov/products/ravg> or contact us at <https://burnseverity.cr.usgs.gov/contact>.