

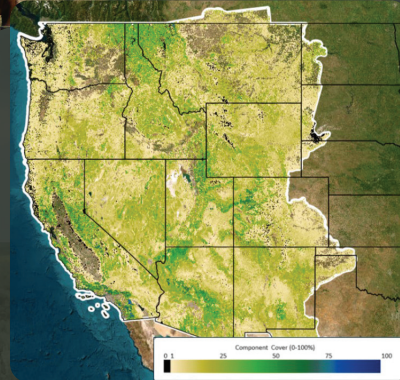


Rangeland Condition Monitoring Assessment and Projection (RCMAP)

Watching Over the West

RCMAP maps and monitors the western United States for caretakers of public and private rangelands.

Identifying types of vegetation cover ranging from sagebrush to trees beginning in 1985 helps with efforts like drought research, species conservation, and grazing.



Access data on the RCMAP Rangeland Viewer: mrlc.gov



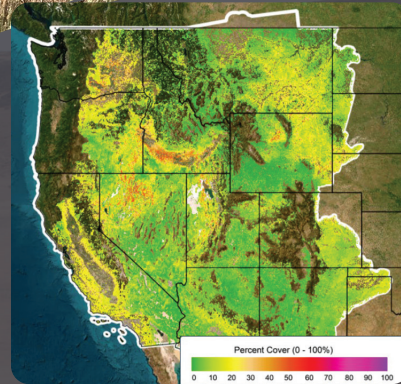


Exotic Annual Grasses

Tracking Rangeland Invaders

Exotic annual grasses, which are invasive species such as cheatgrass, have moved into an estimated 60 percent of the sagebrush rangeland in the United States. These grasses pose a much higher wildfire risk.

Weekly maps in the spring help land managers keep tabs on exotic annual grasses' life cycles to assess fire risk and opportunities for treatment applications and the reestablishment of native species.



Access data on the RCMAP Rangeland Viewer: mrlc.gov

