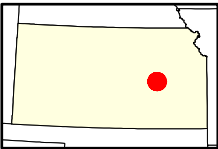
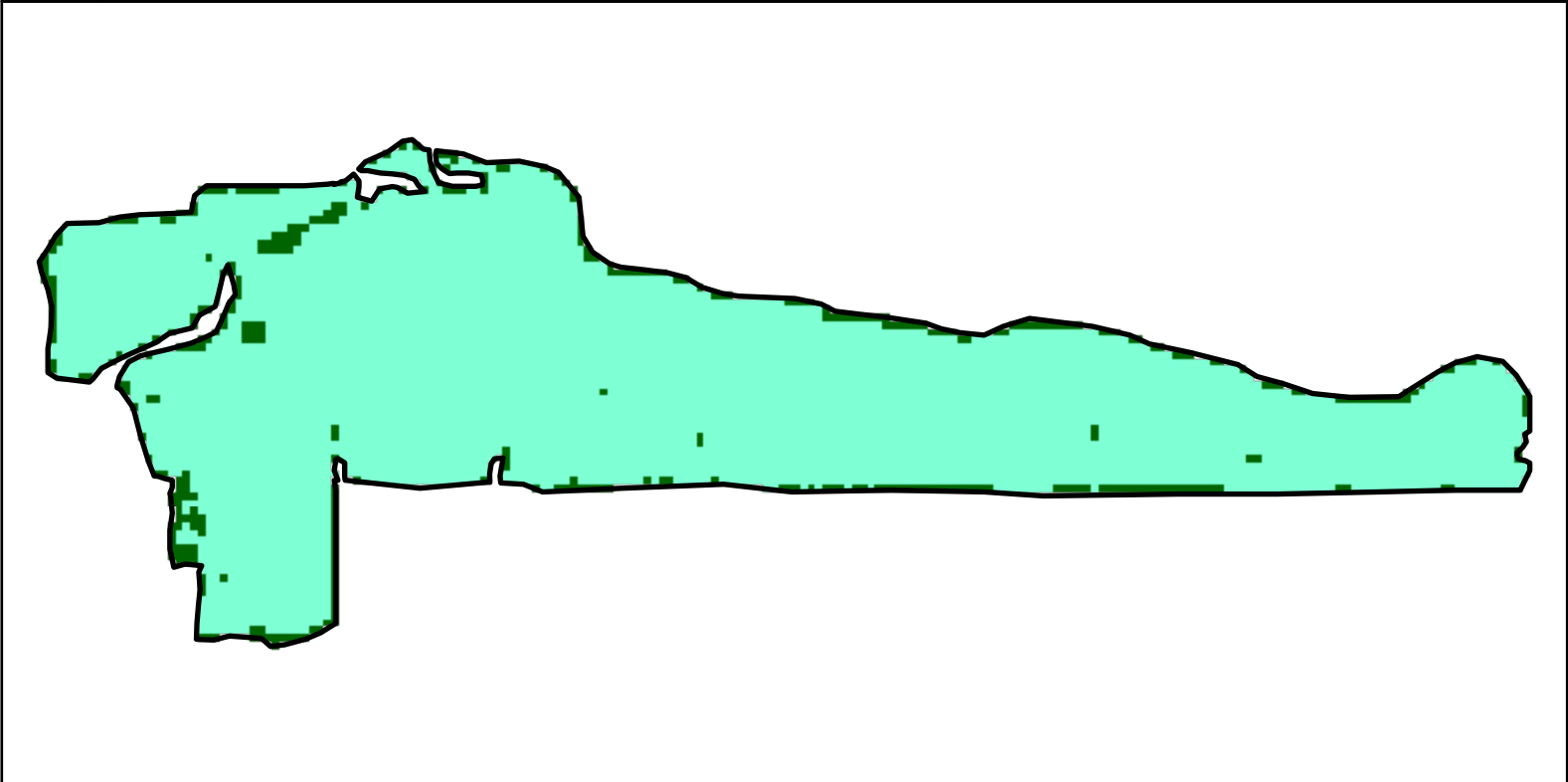
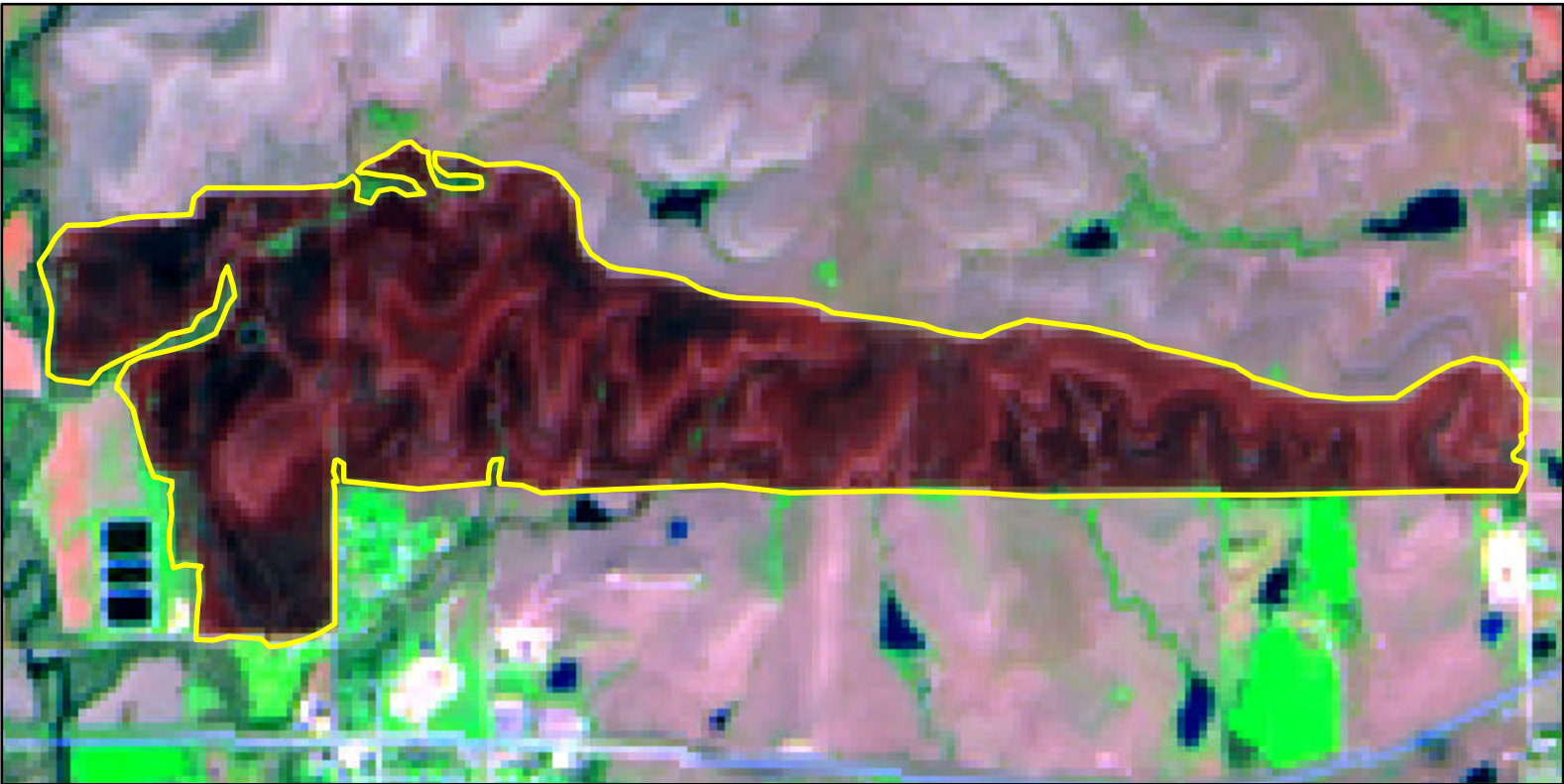


2024 Kansas: 24 TS1, TS2, ET4, ET5, RF4, RF8, BIL
ks3845309656820240327

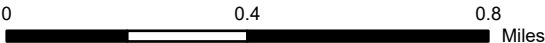


Latitude: 38° 24' 28.8"
Longitude: -96° 31' 30.0"
Fire Ignition Date: March 27, 2024
Assessment Type: Initial
Pre-Fire Image Date: March 19, 2024 (S2B)
Post-Fire Image Date: April 03, 2024 (S2A)



This map portrays fire severity for the fire specified in the map title and summarizes proportions of fire severity classes. These data are produced under the National Burn Severity Mapping Project (NBSMP) jointly implemented by the USGS EROS and the NPS. The NBSMP ascertains the locations of fires based upon special requests from NPS staff members. The NBSMP reserves the right to correct, update or modify geospatial inputs to this map without notification.

* Areas in either the pre-fire or post-fire reflectance imagery containing clouds, snow, shadows, smoke, significantly sized water bodies, missing lines of image data, etc.



Acreage of Burn Severity	
Burn Severity	Acres
Unburned to Low	89
Low	1,189
Moderate	0
High	0
Increased Greenness	0
Non-Processing Area Mask*	0
Total	1,278