

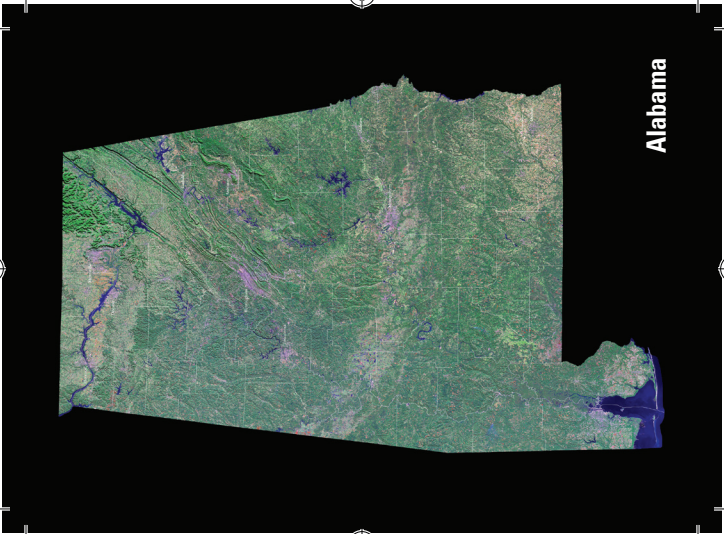


Landsat State Mosaics

Includes all 50 states.

<https://eros.usgs.gov/image-gallery/state-mosaics>





Alabama





Alabama is the only state in the country that contains all of the major natural resources needed to make iron and steel. It is also the largest supplier of cast-iron and steel pipe products.

Capital: *Montgomery*

Date Admitted to the Union: *December 14, 1819*

Total Area: *52,420 square miles (source: 2010 Census)*

Population: *4,833,722 (source: 2013 Census estimate)*

State Bird: *Yellowhammer*

State Flower: *Camellia*

State Motto: *Audemus Jura Nostra Defendere (We Dare Defend Our Rights)*

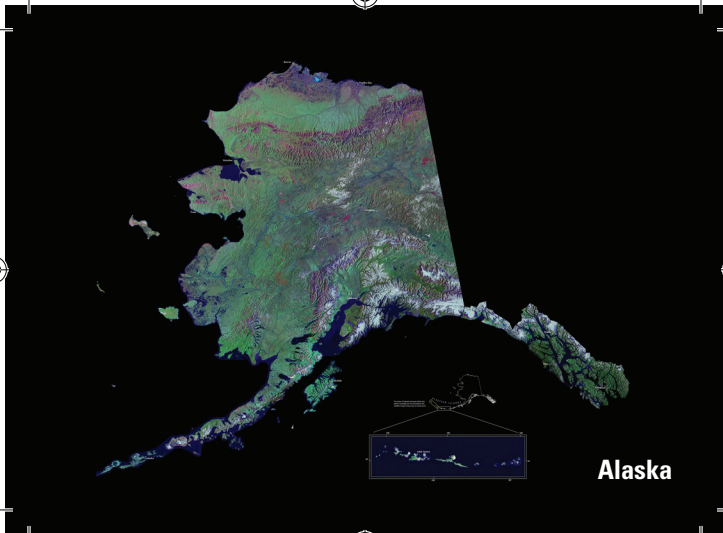
State Nickname: *Yellowhammer State*

Image on front derived from Landsat 7 data and the National Elevation Dataset.

Period of Acquisition: July 1999 - September 2002

usgs.gov/eros

02/14





Alaska has 17 of the 20 highest peaks in the United States. Mt. McKinley is the highest peak in North America at 20,320 feet above sea level. Denali, the native name for the mountain, means "The Great One."

Capital: *Juneau*

Date Admitted to the Union: *January 3, 1959*

Total Area: *665,384 square miles (source: 2010 Census)*

Population: *735,132 (source: 2013 Census estimate)*

State Bird: *Willow Ptarmigan*

State Flower: *Alpine Forget-Me-Not*

State Motto: *North to the Future*

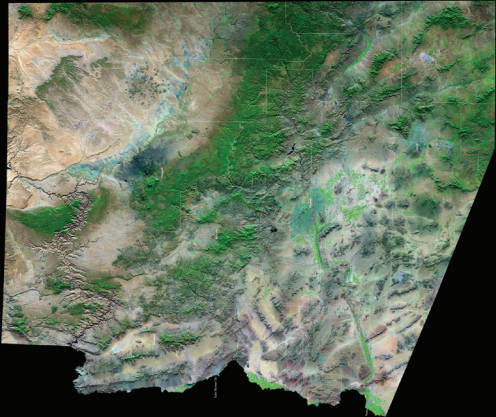
State Nickname: *The Last Frontier*

Image on front derived from Landsat 7 data and the National Elevation Dataset.

Period of Acquisition: July 1999 - September 2002

usgs.gov/eros

02/14



Arizona



Arizona is blessed with many natural wonders including the Grand Canyon, Lake Powell/Rainbow Bridge, Petrified Forest/Painted Desert, Monument Valley, Meteor Crater, and Superstition Mountain.

Capital: *Phoenix*

Date Admitted to the Union: *February 14, 1912*

Total Area: *113,990 square miles (source: 2010 Census)*

Population: *6,626,624 (source: 2013 Census estimate)*

State Bird: *Cactus Wren*

State Flower: *Saguaro Cactus*

State Motto: *Ditat Deus (God Enriches)*

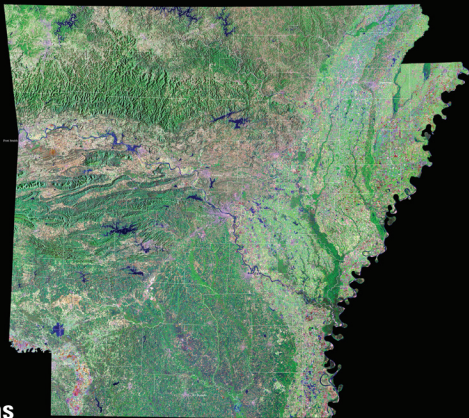
State Nickname: *Grand Canyon State*

Image on front derived from Landsat 7 data and the National Elevation Dataset.

Period of Acquisition: July 1999 - September 2002

usgs.gov/eros

02/14



Arkansas





Arkansas, officially "The Natural State," is a state of mountains, valleys, dense woodland and fertile plains. Its clear lakes and streams and abundant wildlife help to make tourism one of the state's most important industries.

Capital: *Little Rock*

Date Admitted to the Union: *June 15, 1836*

Total Area: *53,179 square miles (source: 2010 Census)*

Population: *2,959,373 (source: 2013 Census estimate)*

State Bird: *Mockingbird*

State Flower: *Apple Blossom*

State Motto: *Regnat Populus (The People Rule)*

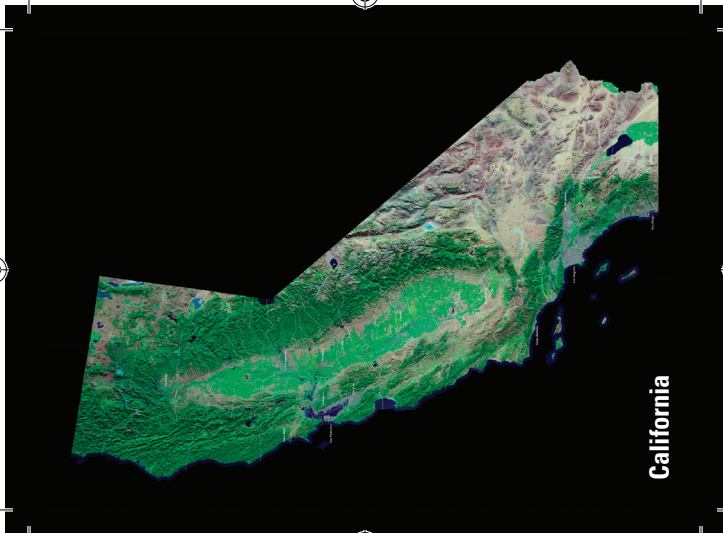
State Nickname: *Natural State*

Image on front derived from Landsat 7 data and the National Elevation Dataset.

Period of Acquisition: July 1999 - September 2002

usgs.gov/eros

02/14





The highest and lowest points in the continental United States are located within 100 miles of each other in California: Mount Whitney (14,494 feet) and Death Valley (282 feet below sea level).

Capital: *Sacramento*

Date Admitted to the Union: *September 9, 1850*

Total Area: *163,695 square miles (source: 2010 Census)*

Population: *38,332,521 (source: 2013 Census estimate)*

State Bird: *California Quail*

State Flower: *California Poppy*

State Motto: *Eureka (I have found it)*

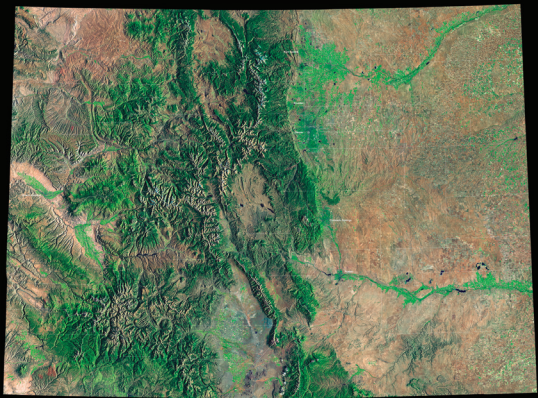
State Nickname: *Golden State*

Image on front derived from Landsat 7 data and the National Elevation Dataset.

Period of Acquisition: July 1999 - September 2002

usgs.gov/eros

02/14



Colorado



Denver, the capital of Colorado, is known as the “Mile High City.” The thirteenth step of the capitol building is exactly one mile (5,280 feet) above sea level.

Capital: *Denver*

Date Admitted to the Union: *August 1, 1876*

Total Area: *104,094 square miles (source: 2010 Census)*

Population: *5,268,367 (source: 2013 Census estimate)*

State Bird: *Lark Bunting*

State Flower: *Rocky Mountain Columbine*

State Motto: *Nil Sine Numine (Nothing Without the Deity)*

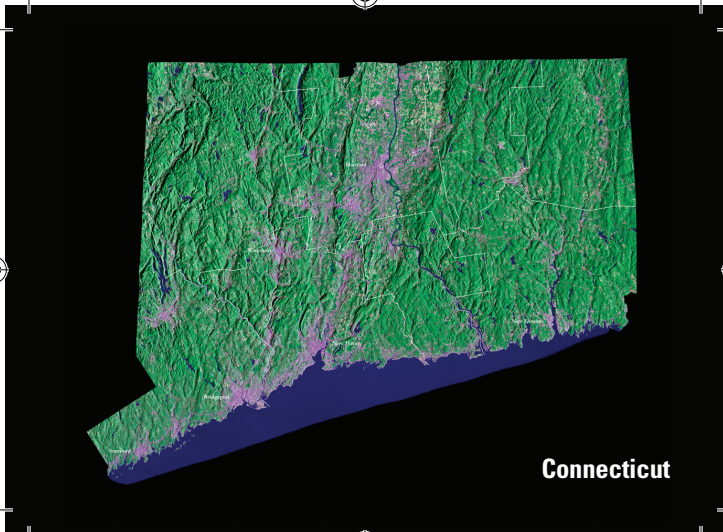
State Nickname: *Centennial State*

Image on front derived from Landsat 7 data and the National Elevation Dataset.

Period of Acquisition: July 1999 - September 2002

usgs.gov/eros

02/14



Connecticut



Groton, Connecticut is home to the USS Nautilus, the first nuclear-powered ship and the first to reach the North Pole, a feat accomplished in 1958. The Nautilus is on display at the Submarine Force Museum.

Capital: *Hartford*

Date Admitted to the Union: *January 9, 1788*

Total Area: *5,543 square miles (source: 2010 Census)*

Population: *3,596,080 (source: 2013 Census estimate)*

State Bird: *Robin*

State Flower: *Mountain Laurel*

State Motto: *Qui transtulit sustinet (He who transplanted still sustains)*

State Nickname: *Constitution State*

Image on front derived from Landsat 7 data and the National Elevation Dataset.

Period of Acquisition: July 1999 - September 2002

usgs.gov/eros

02/14



Delaware



Delaware is known as the "First State," because it was the first of the original thirteen colonies to ratify the United States Constitution.

Capital: *Dover*

Date Admitted to the Union: *December 7, 1787*

Total Area: *2,489 square miles (source: 2010 Census)*

Population: *925,749 (source: 2013 Census estimate)*

State Bird: *Blue Hen Chicken*

State Flower: *Peach Blossom*

State Motto: *Liberty and Independence*

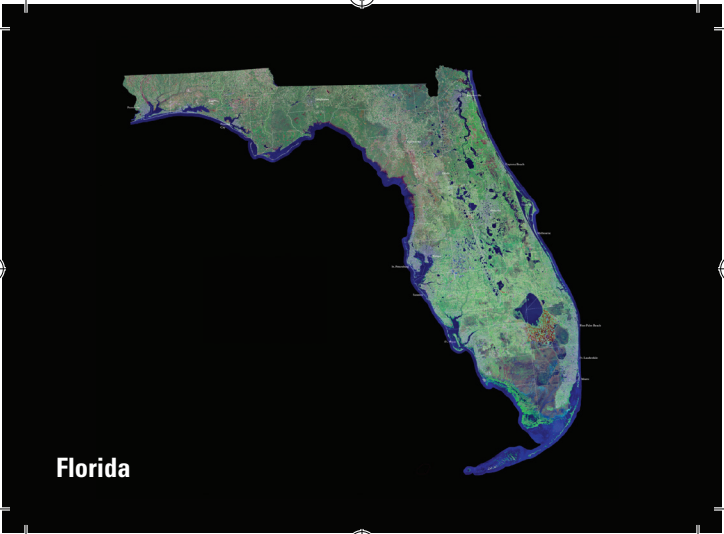
State Nickname: *First State*

Image on front derived from Landsat 7 data and the National Elevation Dataset.

Period of Acquisition: July 1999 - September 2002

usgs.gov/eros

02/14



Florida



Founded by the Spanish in 1565, St. Augustine, Florida is the oldest settlement of European origin in the United States. The Spanish fortress of Castillo de San Marcos in St. Augustine was built from 1672-1695 and is made of coquina, a soft, impact-absorbing stone composed of sea shells.

Capital: *Tallahassee*

Date Admitted to the Union: *March 3, 1845*

Total Area: *65,758 square miles (source: 2010 Census)*

Population: *19,552,860 (source: 2013 Census estimate)*

State Bird: *Mockingbird*

State Flower: *Orange Blossom*

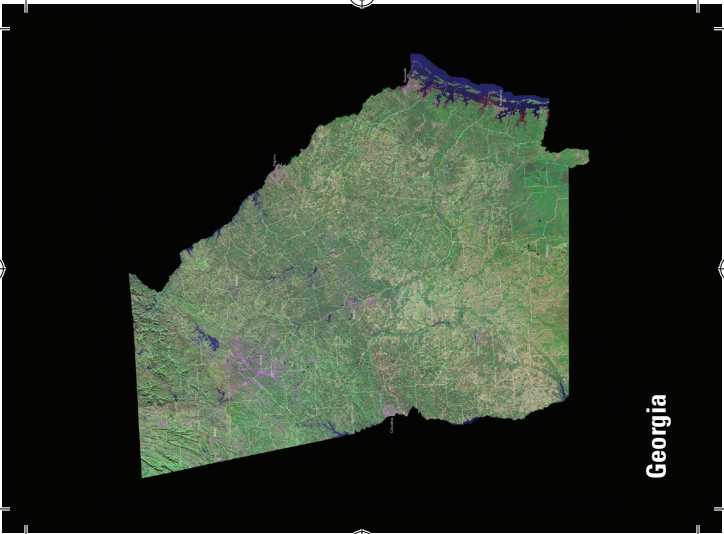
State Motto: *In God we trust*

State Nickname: *Sunshine State*

Image on front derived from Landsat 7 data and the National Elevation Dataset.
Period of Acquisition: July 1999 - September 2002

usgs.gov/eros

02/14



Georgia



Georgia is home to Okefenokee Swamp, a unique area of primitive wetland that provides sanctuary for hundreds of species of birds and wildlife, including several endangered species.

Capital: *Atlanta*

Date Admitted to the Union: *January 2, 1788*

Total Area: *59,425 square miles (source: 2010 Census)*

Population: *9,992,167 (source: 2013 Census estimate)*

State Bird: *Brown Thrasher*

State Flower: *Cherokee Rose*

State Motto: *Wisdom, Justice, and Moderation*

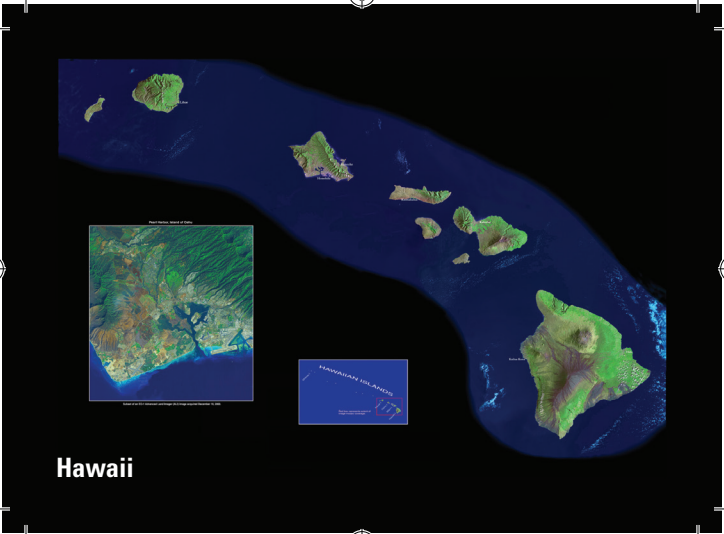
State Nickname: *Peach State*

Image on front derived from Landsat 7 data and the National Elevation Dataset.

Period of Acquisition: July 1999 - September 2002

usgs.gov/eros

02/14



Hawaii



The state of Hawaii consists of eight main islands: Niihau, Kauai, Oahu, Molokai, Lanai, Kahoolawe, Maui, and Hawaii. From east to west, Hawaii is the widest state in the country.

Capital: *Honolulu*

Date Admitted to the Union: *August 21, 1959*

Total Area: *10,932 square miles (source: 2010 Census)*

Population: *1,404,054 (source: 2013 Census estimate)*

State Bird: *Nene (Hawaiian Goose)*

State Flower: *Yellow Hibiscus or Pua Aloalo*

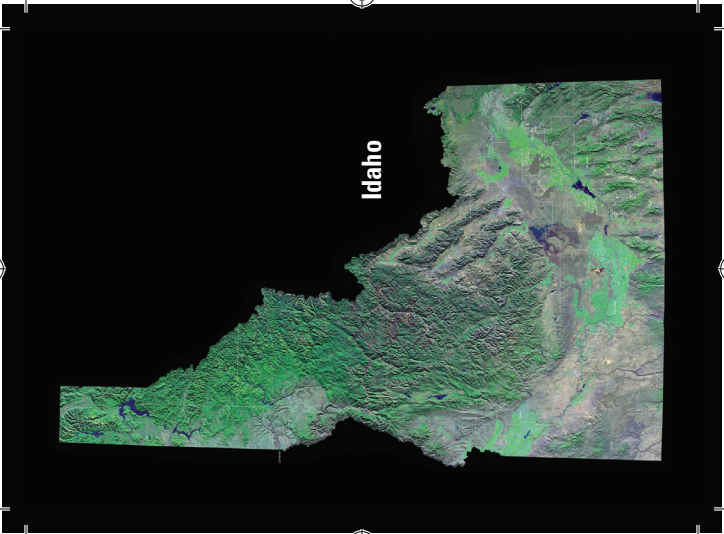
State Motto: *Ua mau ke ea o ka 'aina i ka pono (The life of the land is perpetuated in righteousness)*

State Nickname: *Aloha State*

Image on front derived from Landsat 7 data and the National Elevation Dataset.
Period of Acquisition: July 1999 - September 2002

usgs.gov/eros

02/14



Idaho



Idaho grows more potatoes than any other U.S. growing region, annually producing about 30 percent of U.S. fall production. Warm, sunny days, cool nights, and water from melting snow in nearby mountains make the perfect combination for growing them.

Capital: *Boise*

Date Admitted to the Union: *July 3, 1890*

Total Area: *83,569 square miles (source: 2010 Census)*

Population: *1,612,136 (source: 2013 Census estimate)*

State Bird: *Mountain Bluebird*

State Flower: *Syringa*

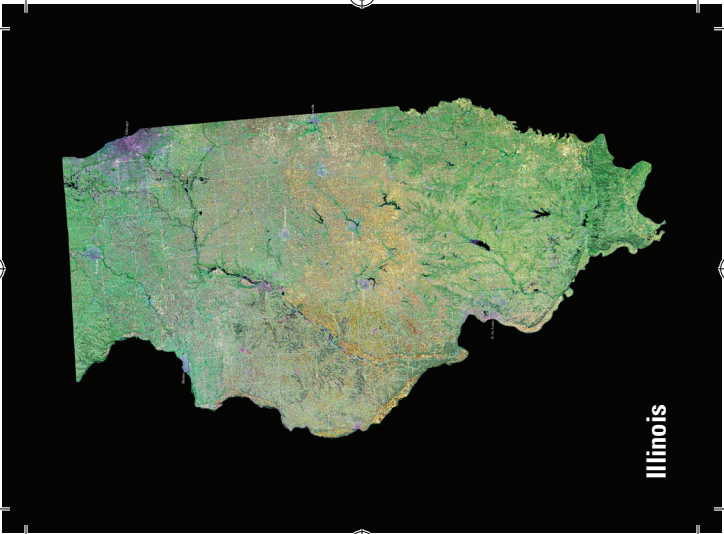
State Motto: *Esto perpetua (Let it be perpetual)*

State Nickname: *Gem State*

Image on front derived from Landsat 7 data and the National Elevation Dataset.
Period of Acquisition: July 1999 - September 2002

usgs.gov/eros

02/14





Before Abraham Lincoln was elected President, he served in the Illinois legislature and practiced law in Springfield. Lincoln is buried just outside Springfield at the Lincoln Tomb State Historic Site.

Capital: *Springfield*

Date Admitted to the Union: *December 3, 1818*

Total Area: *57,914 square miles (source: 2010 Census)*

Population: *12,882,135 (source: 2013 Census estimate)*

State Bird: *Cardinal*

State Flower: *Violet*

State Motto: *State Sovereignty, National Union*

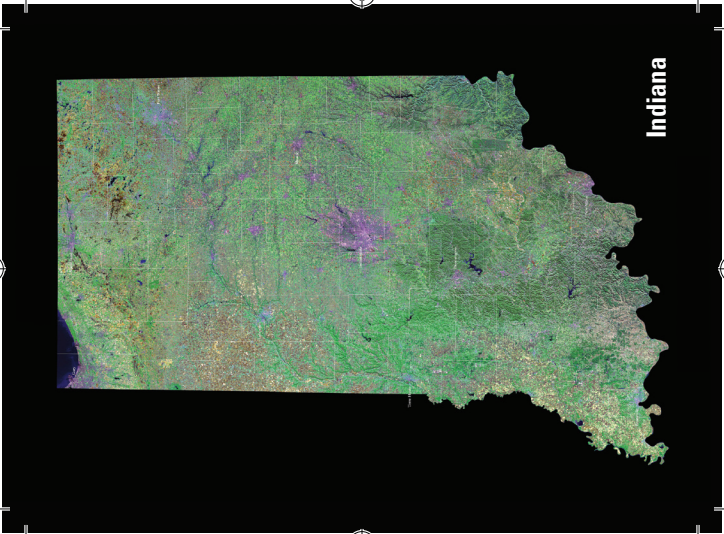
State Nickname: *Prairie State*

Image on front derived from Landsat 7 data and the National Elevation Dataset.

Period of Acquisition: July 1999 - September 2002

usgs.gov/eros

02/14



Indiana



More major highways intersect in Indiana than in any other state, therefore, it is known as "The Crossroads of America." Indiana also has more miles of Interstate Highway per square mile than any other state.

Capital: *Indianapolis*

Date Admitted to the Union: *December 11, 1816*

Total Area: *36,420 square miles (source: 2010 Census)*

Population: *6,570,902 (source: 2013 Census estimate)*

State Bird: *Cardinal*

State Flower: *Peony*

State Motto: *The Crossroads of America*

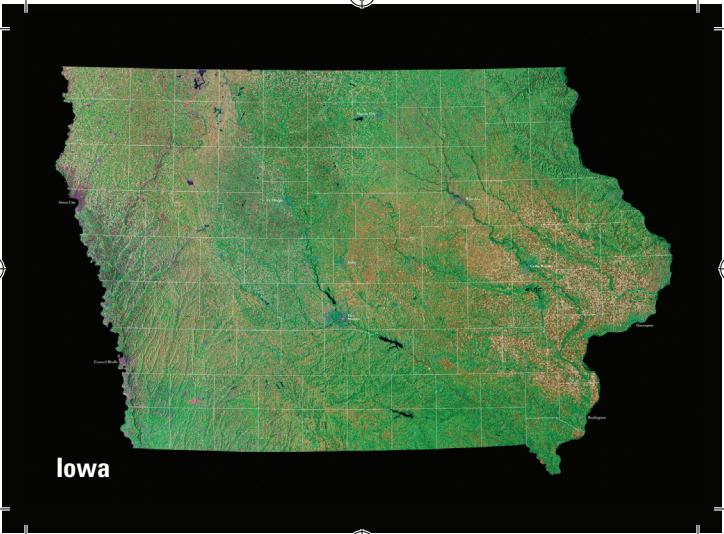
State Nickname: *Hoosier State*

Image on front derived from Landsat 7 data and the National Elevation Dataset.

Period of Acquisition: July 1999 - September 2002

usgs.gov/eros

02/14





Iowa gets its name from an Indian word meaning “land between two rivers.” It is the only state whose east and west borders are entirely formed by water: the Missouri and Mississippi Rivers.

Capital: *Des Moines*

Date Admitted to the Union: *December 28, 1846*

Total Area: *56,273 square miles (source: 2010 Census)*

Population: *3,090,416 (source: 2013 Census estimate)*

State Bird: *Eastern Goldfinch*

State Flower: *Wild Prairie Rose*

State Motto: *Our liberties we prize, and our rights we will maintain*

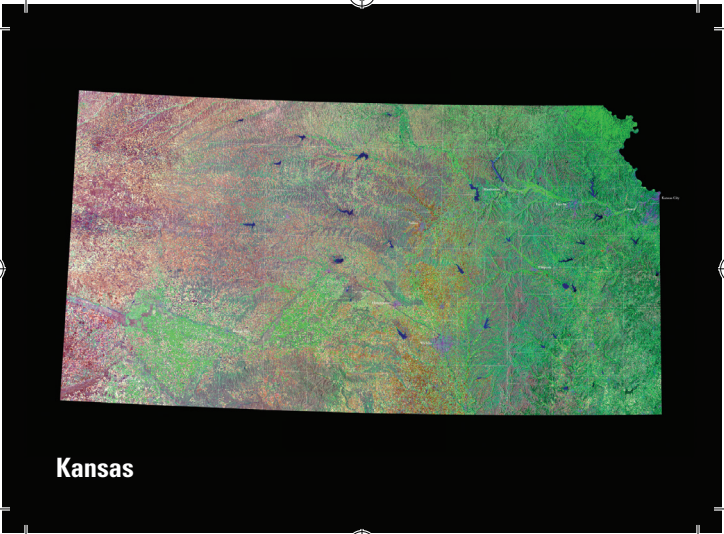
State Nickname: *Hawkeye State*

Image on front derived from Landsat 7 data and the National Elevation Dataset.

Period of Acquisition: July 1999 - September 2002

usgs.gov/eros

02/14



Kansas



Located just southeast of Osborne, Kansas, is the Geodetic Center of North America. The Geodetic Center is the initial point upon which all North American surveys, deeds, and maps are based.

Capital: *Topeka*

Date Admitted to the Union: *January 29, 1861*

Total Area: *82,278 square miles (source: 2010 Census)*

Population: *2,893,957 (source: 2013 Census estimate)*

State Bird: *Western Meadowlark*

State Flower: *Sunflower*

State Motto: *Ad Astra Per Aspera (To the stars through difficulties)*

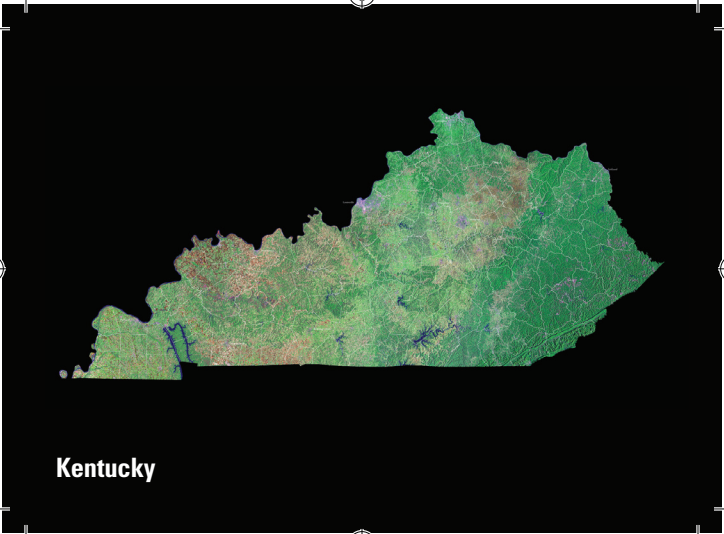
State Nickname: *Sunflower State*

Image on front derived from Landsat 7 data and the National Elevation Dataset.

Period of Acquisition: July 1999 - September 2002

usgs.gov/eros

02/14



Kentucky



Mammoth Cave, Kentucky is the world's longest cave system, with more than 400 miles explored. Tours of Mammoth Cave have been given since 1816.

Capital: *Frankfort*

Date Admitted to the Union: *June 1, 1792*

Total Area: *40,408 square miles (source: 2010 Census)*

Population: *4,395,295 (source: 2013 Census estimate)*

State Bird: *Cardinal*

State Flower: *Goldenrod*

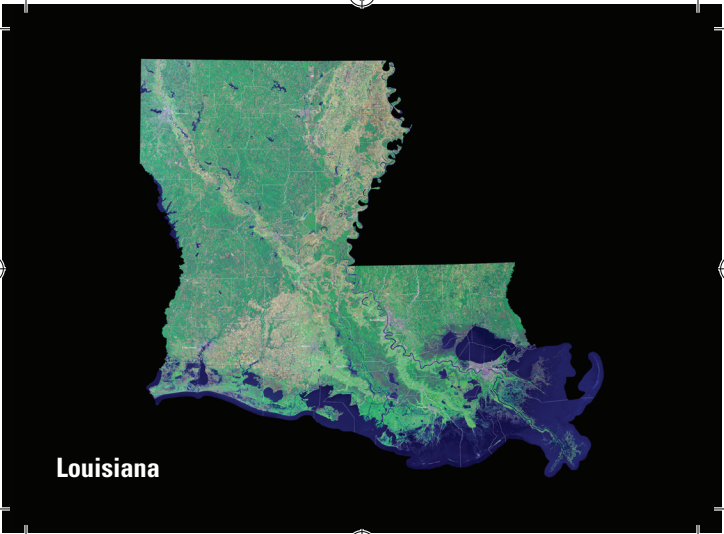
State Motto: *United We Stand, Divided We Fall*

State Nickname: *Bluegrass State*

Image on front derived from Landsat 7 data and the National Elevation Dataset.
Period of Acquisition: July 1999 - September 2002

usgs.gov/eros

02/14



Louisiana



Louisiana is the only state with a large population of Cajuns, descendants of the Acadians who were driven out of Canada in the 1700s because they would not pledge allegiance to the King of England.

Capital: *Baton Rouge*

Date Admitted to the Union: *April 30, 1812*

Total Area: *52,378 square miles (source: 2010 Census)*

Population: *4,625,470 (source: 2013 Census estimate)*

State Bird: *Eastern Brown Pelican*

State Flower: *Magnolia*

State Motto: *Union, Justice, Confidence*

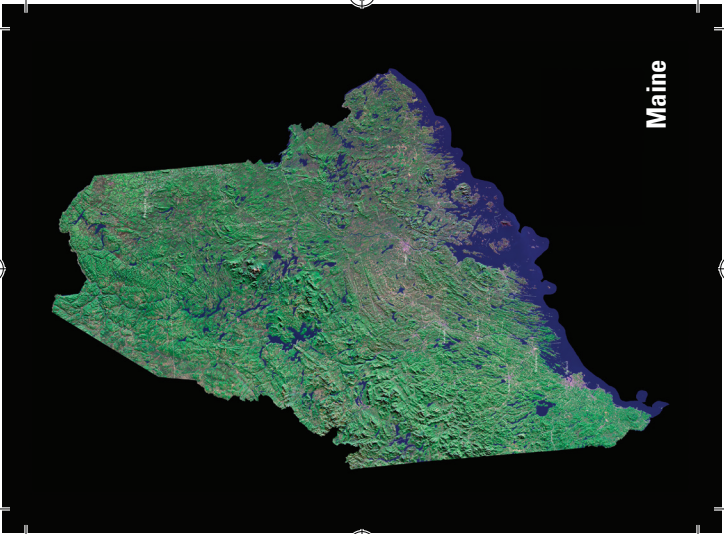
State Nickname: *Pelican State*

Image on front derived from Landsat 7 data and the National Elevation Dataset.

Period of Acquisition: July 1999 - September 2002

usgs.gov/eros

02/14



Maine



The West Quoddy Head Lighthouse in Lubec, Maine is the easternmost point in the 48 conterminous states. The first structure was built in 1808 by order of President Thomas Jefferson. The current brick lighthouse was built in 1858.

Capital: *Augusta*

Date Admitted to the Union: *March 15, 1820*

Total Area: *35,380 square miles (source: 2010 Census)*

Population: *1,328,302 (source: 2013 Census estimate)*

State Bird: *Chickadee*

State Flower: *White pine cone and tassel*

State Motto: *Dirigo (I direct)*

State Nickname: *Pine Tree State*

Image on front derived from Landsat 7 data and the National Elevation Dataset.

Period of Acquisition: July 1999 - September 2002

usgs.gov/eros

02/14



Maryland





Forests cover approximately 2.6 million acres, or 41 percent, of Maryland's land surface. Oak and hickory are the dominant hardwood or deciduous forest types, and loblolly pine is the most prevalent softwood.

Capital: *Annapolis*

Date Admitted to the Union: *April 28, 1788*

Total Area: *12,406 square miles (source: 2010 Census)*

Population: *5,928,814 (source: 2013 Census estimate)*

State Bird: *Baltimore Oriole*

State Flower: *Black-Eyed Susan*

State Motto: *Fatti Maschii Parole Femine (Manly Deeds, Womanly Words)*

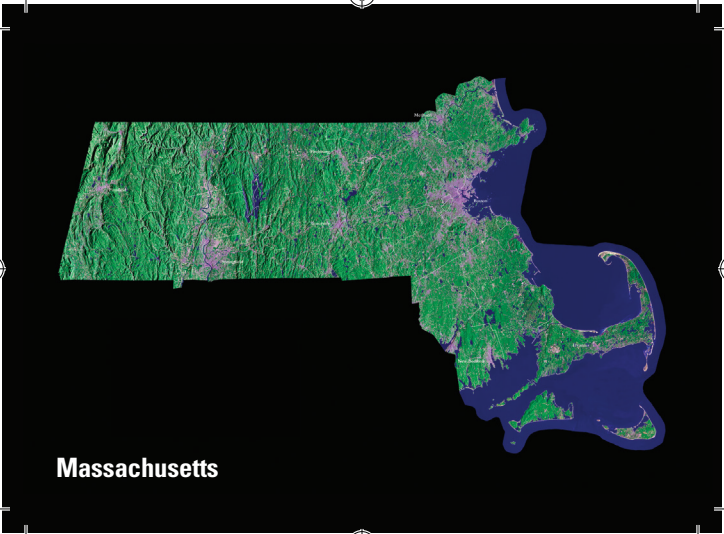
State Nickname: *Old Line State*

Image on front derived from Landsat 7 data and the National Elevation Dataset.

Period of Acquisition: July 1999 - September 2002

usgs.gov/eros

02/14



Massachusetts



Plymouth Rock is the legendary stepping stone of the Pilgrims' arrival in what is now Massachusetts. It sits on the shore of Plymouth Harbor at Pilgrim Memorial State Park and is actually no bigger than a coffee table.

Capital: *Boston*

Date Admitted to the Union: *February 6, 1788*

Total Area: *10,554 square miles (source: 2010 Census)*

Population: *6,692,824 (source: 2013 Census estimate)*

State Bird: *Chickadee*

State Flower: *Trailing-Arbutus*

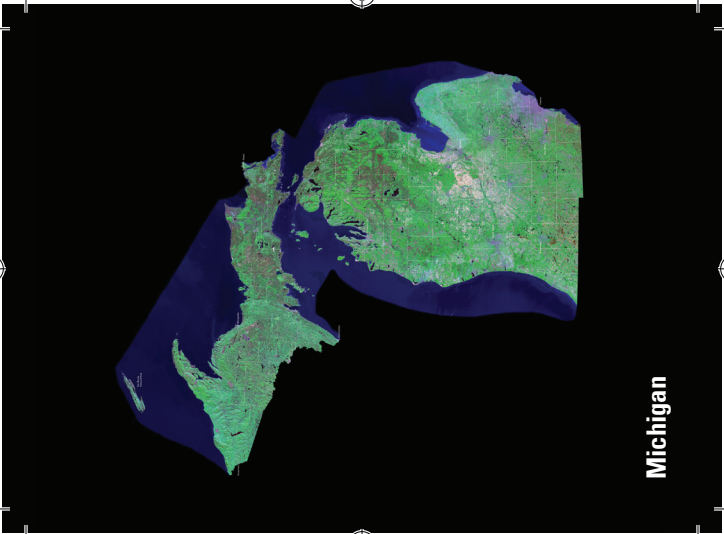
State Motto: *Ense petit placidam sub libertate quietem (By the sword we seek peace, but peace only under liberty)*

State Nickname: *Bay State*

Image on front derived from Landsat 7 data and the National Elevation Dataset.
Period of Acquisition: July 1999 - September 2002

usgs.gov/eros

02/14



Michigan



The Mackinac Bridge is one of the longest suspension bridges in the world. It connects the upper and lower peninsulas of Michigan and spans five miles over the Straits of Mackinac, where Lake Michigan and Lake Huron meet.

Capital: *Lansing*

Date Admitted to the Union: *January 26, 1837*

Total Area: *96,714 square miles (source: 2010 Census)*

Population: *9,895,622 (source: 2013 Census estimate)*

State Bird: *Robin*

State Flower: *Apple Blossom*

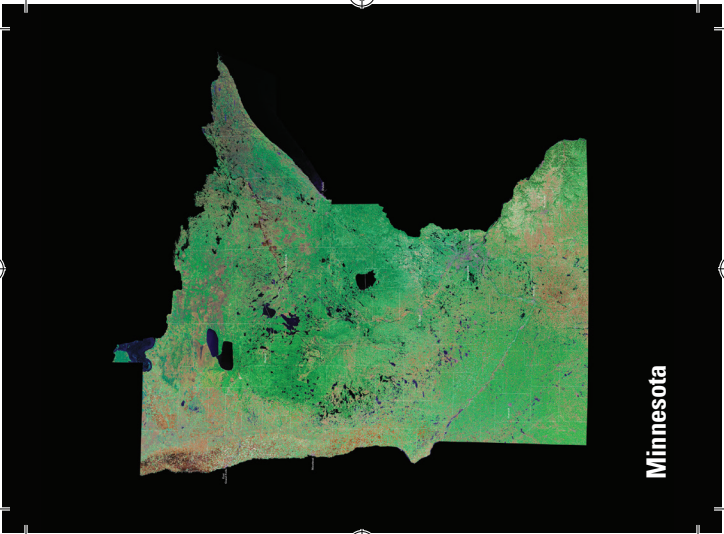
State Motto: *Si Quaeris Peninsulam Amoenam, Circumspice (If you seek a pleasant peninsula, look about you)*

State Nickname: *Wolverine State*

Image on front derived from Landsat 7 data and the National Elevation Dataset.
Period of Acquisition: July 1999 - September 2002

usgs.gov/eros

02/14



Minnesota



Minnesota has more shoreline than California, Florida, and Hawaii combined. It is sometimes called the "Land of 10,000 Lakes," but it actually has 12,000 lakes, three-fourths of which are four hectares (10 acres) or more in size.

Capital: *Saint Paul*

Date Admitted to the Union: *May 11, 1858*

Total Area: *86,936 square miles (source: 2010 Census)*

Population: *5,420,380 (source: 2013 Census estimate)*

State Bird: *Common loon*

State Flower: *Pink and White Lady's Slipper*

State Motto: *L'étoile du Nord (Star of the North)*

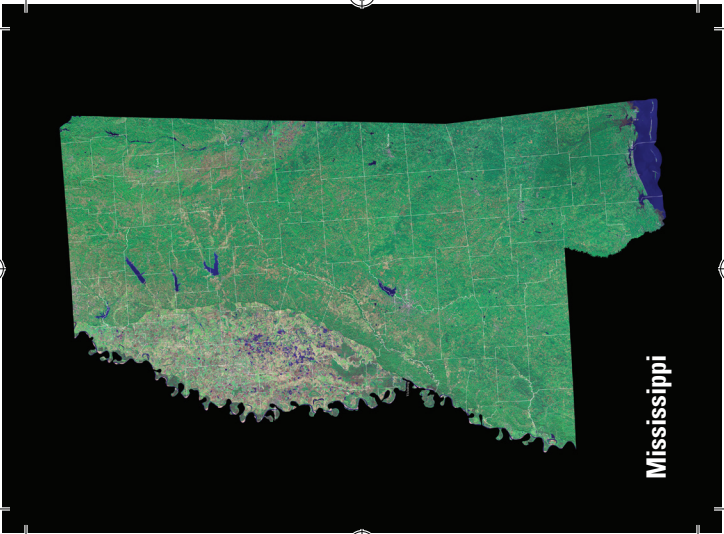
State Nickname: *North Star State*

Image on front derived from Landsat 7 data and the National Elevation Dataset.

Period of Acquisition: July 1999 - September 2002

usgs.gov/eros

02/14





Hernando DeSoto, a Spanish explorer, discovered the Mississippi River in 1540. It is the largest river in the United States and is the country's chief waterway. Its nickname is "Old Man River."

Capital: *Jackson*

Date Admitted to the Union: *December 10, 1817*

Total Area: *48,432 square miles (source: 2010 Census)*

Population: *2,991,207 (source: 2013 Census estimate)*

State Bird: *Mockingbird*

State Flower: *Magnolia*

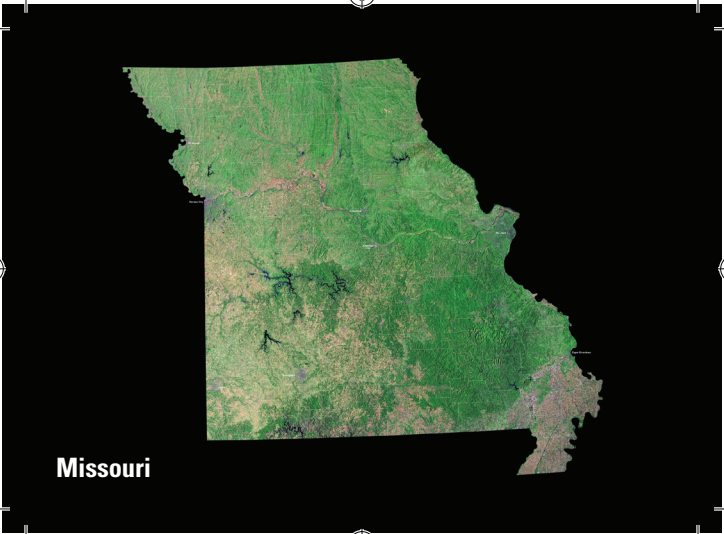
State Motto: *Virtute et Armis (By Valor and Arms)*

State Nickname: *Magnolia State*

Image on front derived from Landsat 7 data and the National Elevation Dataset.
Period of Acquisition: July 1999 - September 2002

usgs.gov/eros

02/14



Missouri



The largest earthquake ever recorded in the continental United States occurred near New Madrid, Missouri, in 1812. The quake shook more than one million square miles and was felt as far as 1,000 miles away.

Capital: *Jefferson City*

Date Admitted to the Union: *August 10, 1821*

Total Area: *69,707 square miles (source: 2010 Census)*

Population: *6,044,171 (source: 2013 Census estimate)*

State Bird: *Bluebird*

State Flower: *Hawthorn*

State Motto: *Salus Populi Suprema Lex Esto (Let the welfare of the People be the supreme law)*

State Nickname: *Show Me State*

Image on front derived from Landsat 7 data and the National Elevation Dataset.
Period of Acquisition: July 1999 - September 2002

usgs.gov/eros

02/14



Montana



With a total area of 147,040 square miles, Montana is the fourth largest state in the country. But it has the forty-fourth largest population. Montana has an average population density of seven people per square mile.

Capital: *Helena*

Date Admitted to the Union: *November 8, 1889*

Total Area: *147,040 square miles (source: 2010 Census)*

Population: *1,015,165 (source: 2013 Census estimate)*

State Bird: *Western Meadowlark*

State Flower: *Bitterroot*

State Motto: *Oro y Plata (Gold and Silver)*

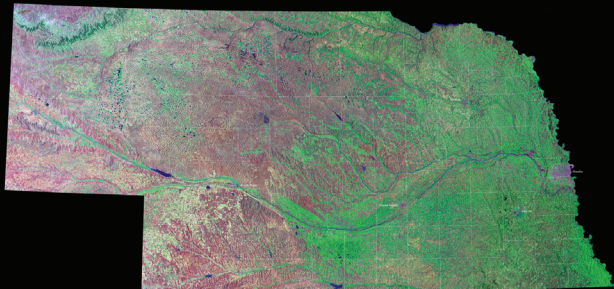
State Nickname: *Treasure State*

Image on front derived from Landsat 7 data and the National Elevation Dataset.

Period of Acquisition: July 1999 - September 2002

usgs.gov/eros

02/14



Nebraska





Although once described as the “Great American Desert,” Nebraska is now a breadbasket for the nation and much of the world. It ranks among the leading states in many agricultural production categories.

Capital: *Lincoln*

Date Admitted to the Union: *March 1, 1867*

Total Area: *77,348 square miles (source: 2010 Census)*

Population: *1,868,516 (source: 2013 Census estimate)*

State Bird: *Western Meadowlark*

State Flower: *Goldenrod*

State Motto: *Equality Before the Law*

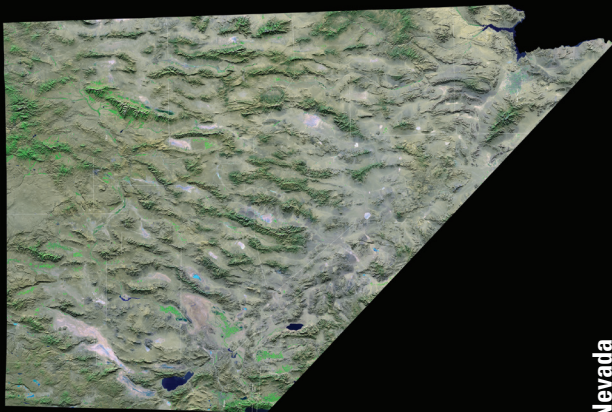
State Nickname: *Cornhusker State*

Image on front derived from Landsat 7 data and the National Elevation Dataset.

Period of Acquisition: July 1999 - September 2002

usgs.gov/eros

02/14



Nevada





Nevada was the fastest growing state between 1990 and 2000, with a population growth rate of 66.3 percent. No other state topped 40 percent.

Capital: *Carson City*

Date Admitted to the Union: *October 31, 1864*

Total Area: *110,572 square miles (source: 2010 Census)*

Population: *2,790,136 (source: 2013 Census estimate)*

State Bird: *Mountain Bluebird*

State Flower: *Sagebrush*

State Motto: *All for our country*

State Nickname: *Silver State*

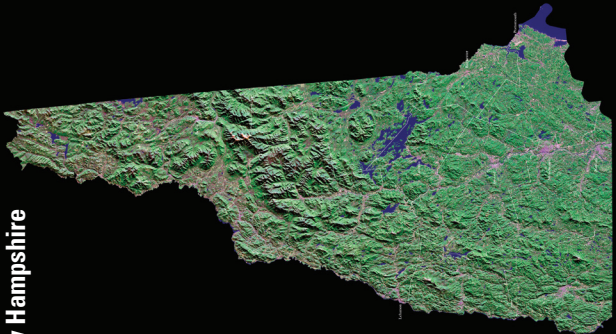
Image on front derived from Landsat 7 data and the National Elevation Dataset.
Period of Acquisition: July 1999 - September 2002

usgs.gov/eros

02/14



New Hampshire





In 1934, the summit of Mount Washington in New Hampshire's White Mountains experienced a wind gust of 231 miles per hour, the highest surface wind speed ever recorded.

Capital: *Concord*

Date Admitted to the Union: *June 21, 1788*

Total Area: *9,349 square miles (source: 2010 Census)*

Population: *1,323,459 (source: 2013 Census estimate)*

State Bird: *Purple Finch*

State Flower: *Purple Lilac*

State Motto: *Live free or die*

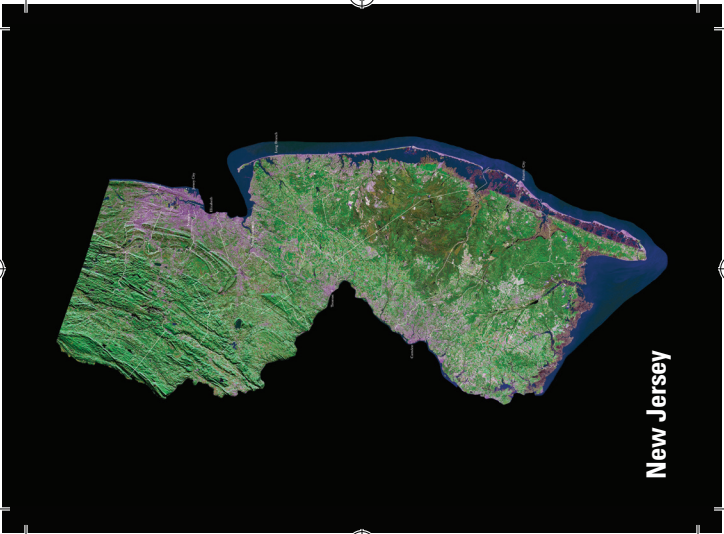
State Nickname: *Granite State*

Image on front derived from Landsat 7 data and the National Elevation Dataset.

Period of Acquisition: July 1999 - September 2002

usgs.gov/eros

02/14



New Jersey



Modern paleontology began with the 1858 discovery by William Parker Foulke at Haddonfield, New Jersey of the nearly complete skeleton of a dinosaur called Hadrosaurus.

Capital: *Trenton*

Date Admitted to the Union: *December 18, 1787*

Total Area: *8,723 square miles (source: 2010 Census)*

Population: *8,899,339 (source: 2013 Census estimate)*

State Bird: *Eastern Goldfinch*

State Flower: *Violet*

State Motto: *Liberty and prosperity*

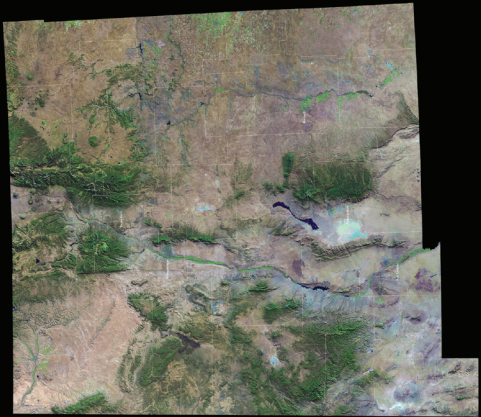
State Nickname: *Garden State*

Image on front derived from Landsat 7 data and the National Elevation Dataset.

Period of Acquisition: July 1999 - September 2002

usgs.gov/eros

02/14



New Mexico



Lakes and rivers make up only 0.002 percent of New Mexico's total surface area—the lowest water-to-land ratio of all fifty states. Most of New Mexico's lakes are human-made reservoirs.

Capital: *Santa Fe*

Date Admitted to the Union: *January 6, 1912*

Total Area: *121,590 square miles (source: 2010 Census)*

Population: *2,085,287 (source: 2013 Census estimate)*

State Bird: *Roadrunner*

State Flower: *Yucca Flower*

State Motto: *Crescit Eundo (It Grows As It Goes)*

State Nickname: *Land of Enchantment*

Image on front derived from Landsat 7 data and the National Elevation Dataset.

Period of Acquisition: July 1999 - September 2002

usgs.gov/eros

02/14



New York



New York's Adirondack Park is the largest publicly-protected area in the conterminous United States, greater in size than Yellowstone, Everglades, Glacier, and Grand Canyon National Parks combined.

Capital: *Albany*

Date Admitted to the Union: *July 26, 1788*

Total Area: *54,555 square miles (source: 2010 Census)*

Population: *19,651,127 (source: 2013 Census estimate)*

State Bird: *Bluebird*

State Flower: *Rose*

State Motto: *Excelsior (Ever Upward)*

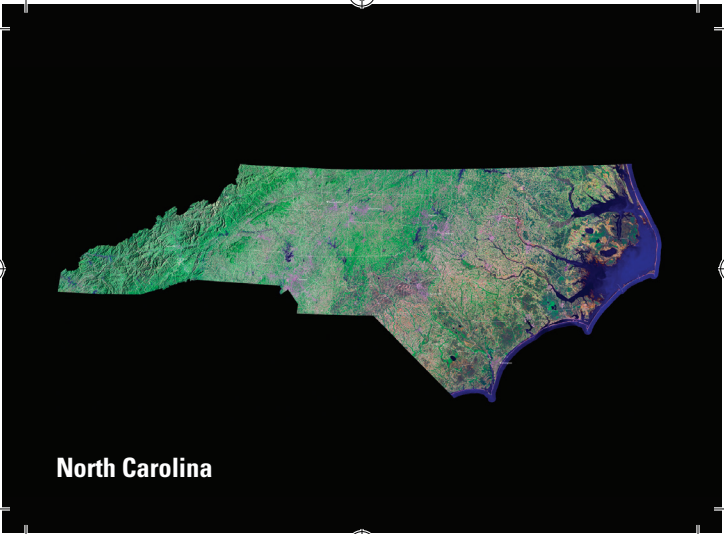
State Nickname: *Empire State*

Image on front derived from Landsat 7 data and the National Elevation Dataset.

Period of Acquisition: July 1999 - September 2002

usgs.gov/eros

02/14



North Carolina



Orville and Wilbur Wright made the first powered flight near Kitty Hawk, North Carolina in 1903. The actual flight took place four miles away at the Kill Devil Hills, now the site of Wright Brothers National Memorial.

Capital: *Raleigh*

Date Admitted to the Union: *November 21, 1789*

Total Area: *53,819 square miles (source: 2010 Census)*

Population: *9,848,060 (source: 2013 Census estimate)*

State Bird: *Cardinal*

State Flower: *American Dogwood*

State Motto: *Esse quam videri (To be rather than to seem)*

State Nickname: *Tar Heel State*

Image on front derived from Landsat 7 data and the National Elevation Dataset.

Period of Acquisition: July 1999 - September 2002

usgs.gov/eros

02/14



North Dakota





Since 1931, Rugby, North Dakota, has been recognized as the geographical center of North America. A 15-foot tall rock obelisk, flanked by poles flying the United States and Canadian flags, marks the location.

Capital: *Bismarck*

Date Admitted to the Union: *November 2, 1889*

Total Area: *70,698 square miles (source: 2010 Census)*

Population: *723,393 (source: 2013 Census estimate)*

State Bird: *Western Meadowlark*

State Flower: *Wild Prairie Rose*

State Motto: *Liberty and Union Now and Forever, One and Inseparable*

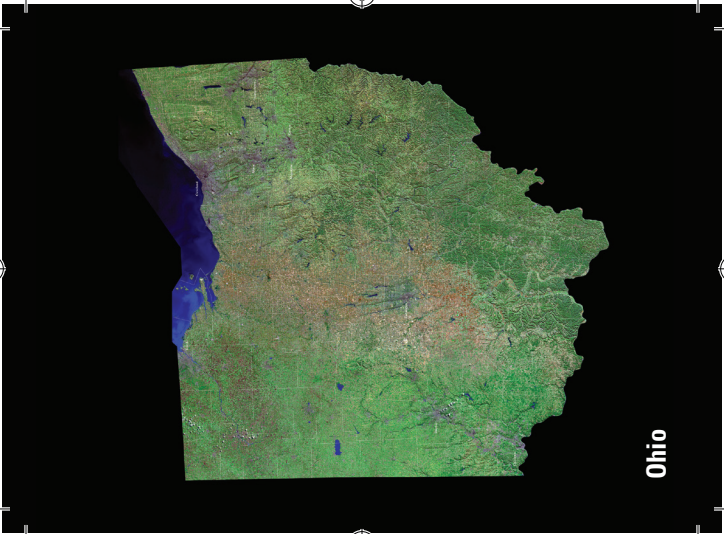
State Nickname: *Peace Garden State*

Image on front derived from Landsat 7 data and the National Elevation Dataset.

Period of Acquisition: July 1999 - September 2002

usgs.gov/eros

02/14



Ohio



Did you know that nearly 50 percent of the United States population lives within a 500-mile radius of Columbus, Ohio? Columbus is the state capital and Ohio's largest city. It is also home to The Ohio State University.

Capital: *Columbus*

Date Admitted to the Union: *March 1, 1803*

Total Area: *44,826 square miles (source: 2010 Census)*

Population: *11,570,808 (source: 2013 Census estimate)*

State Bird: *Cardinal*

State Flower: *Scarlet Carnation*

State Motto: *With God, All Things Are Possible*

State Nickname: *Buckeye State*

Image on front derived from Landsat 7 data and the National Elevation Dataset.

Period of Acquisition: July 1999 - September 2002

usgs.gov/eros

02/14



Oklahoma



Oklahoma has the largest Native American population of any state. Many of the 250,000 American Indians living in Oklahoma are descended from the original 67 tribes who inhabited Indian Territory. Oklahoma is tribal headquarters for 39 tribes.

Capital: *Oklahoma City*

Date Admitted to the Union: *November 16, 1907*

Total Area: *69,899 square miles (source: 2010 Census)*

Population: *3,850,568 (source: 2013 Census estimate)*

State Bird: *Scissor-tailed Flycatcher*

State Flower: *Mistletoe*

State Motto: *Labor omnia vincit (Labor conquers all things)*

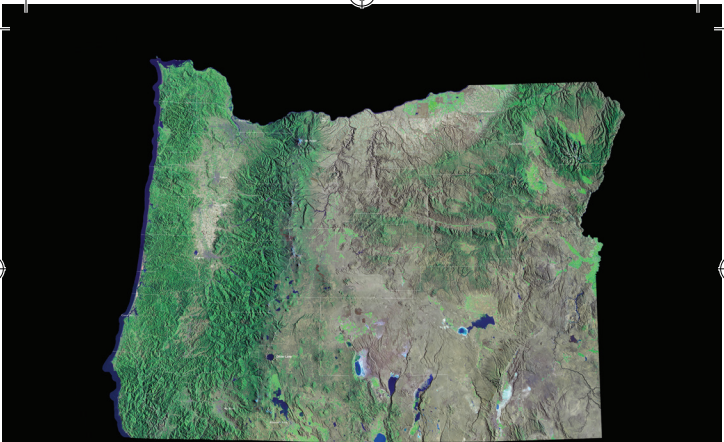
State Nickname: *Sooner State*

Image on front derived from Landsat 7 data and the National Elevation Dataset.

Period of Acquisition: July 1999 - September 2002

usgs.gov/eros

02/14



Oregon



Crater Lake, in south-central Oregon, is the deepest lake in the United States and was formed in the remains of an ancient volcano. The lake is widely known for its intense blue color and spectacular views.

Capital: *Salem*

Date Admitted to the Union: *February 14, 1859*

Total Area: *98,379 square miles (source: 2010 Census)*

Population: *3,930,065 (source: 2013 Census estimate)*

State Bird: *Western Meadowlark*

State Flower: *Oregon Grape*

State Motto: *Alis Volat Propiis (She Flies With Her Own Wings)*

State Nickname: *Beaver State*

Image on front derived from Landsat 7 data and the National Elevation Dataset.

Period of Acquisition: July 1999 - September 2002

usgs.gov/eros

02/14



Pennsylvania





The first commercial oil well in the United States was drilled by Edwin Drake near Titusville, Pennsylvania in 1859. Pennsylvania produced nearly half of the world's supply of oil until the Texas oil boom in 1901.

Capital: *Harrisburg*

Date Admitted to the Union: *December 12, 1787*

Total Area: *46,054 square miles (source: 2010 Census)*

Population: *12,773,801 (source: 2013 Census estimate)*

State Bird: *Ruffed Grouse*

State Flower: *Mountain Laurel*

State Motto: *Virtue, liberty, and independence*

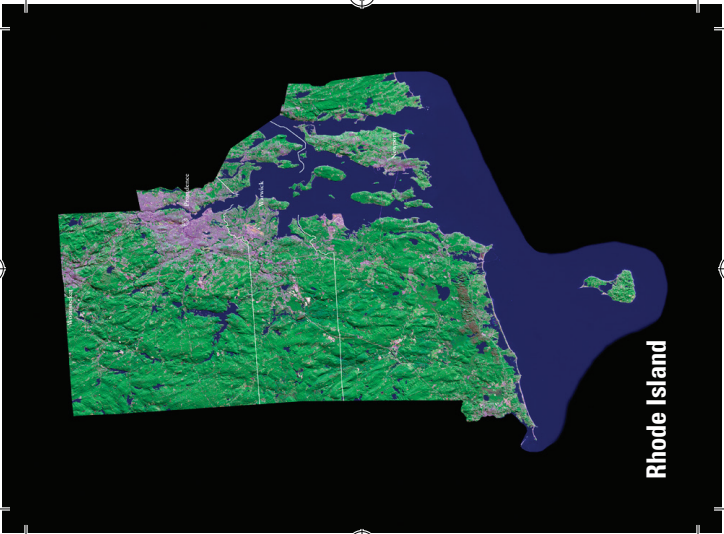
State Nickname: *Keystone State*

Image on front derived from Landsat 7 data and the National Elevation Dataset.

Period of Acquisition: July 1999 - September 2002

usgs.gov/eros

02/14



Rhode Island



The total area (land and water) of Rhode Island is only 1,545 square miles. The state measures about 37 miles east-west, and about 48 miles north-south.

Capital: *Providence*

Date Admitted to the Union: *May 29, 1790*

Total Area: *1,545 square miles (source: 2010 Census)*

Population: *1,051,511 (source: 2013 Census estimate)*

State Bird: *Rhode Island Red*

State Flower: *Violet*

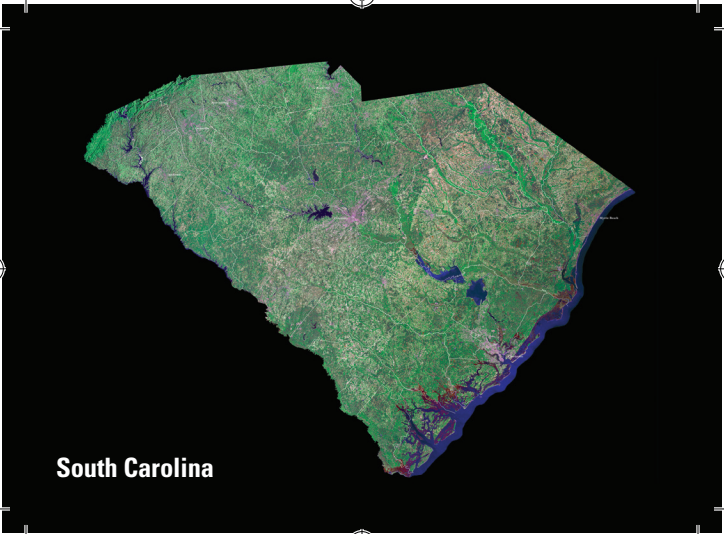
State Motto: *Hope*

State Nickname: *Ocean State*

Image on front derived from Landsat 7 data and the National Elevation Dataset.
Period of Acquisition: July 1999 - September 2002

usgs.gov/eros

02/14



South Carolina



Fort Sumter National Monument in Charleston harbor marks the site of the first hostilities of the Civil War in April, 1861.

Capital: *Columbia*

Date Admitted to the Union: *May 23, 1788*

Total Area: *32,020 square miles (source: 2010 Census)*

Population: *4,774,839 (source: 2013 Census estimate)*

State Bird: *Carolina Wren*

State Flower: *Yellow Jessamine*

State Motto: *Dum spiro spero (While I breathe, I hope) and Animis opibusque parati (Prepared in mind and resources)*

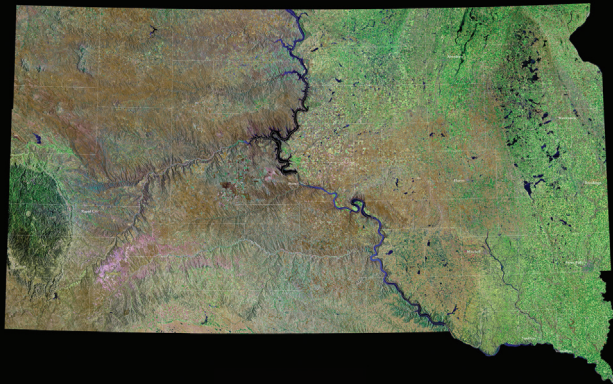
State Nickname: *Palmetto State*

Image on front derived from Landsat 7 data and the National Elevation Dataset.

Period of Acquisition: July 1999 - September 2002

usgs.gov/eros

02/14



South Dakota





South Dakota is home to the fabled "Black Hills." Seen from a distance, these pine-covered hills, rising several thousand feet above the surrounding prairie, appear black.

Capital: *Pierre*

Date Admitted to the Union: *November 2, 1889*

Total Area: *77,116 square miles (source: 2010 Census)*

Population: *844,877 (source: 2013 Census estimate)*

State Bird: *Ring-Necked Pheasant*

State Flower: *Pasque Flower*

State Motto: *Under God the People Rule*

State Nickname: *Mount Rushmore State*

Image on front derived from Landsat 7 data and the National Elevation Dataset.

Period of Acquisition: July 1999 - September 2002

usgs.gov/eros

02/14



Tennessee



Tennessee has had several nicknames, but the most popular is the "Volunteer State." The nickname originated during the War of 1812 when volunteer soldiers from Tennessee displayed marked valor in the Battle of New Orleans.

Capital: *Nashville*

Date Admitted to the Union: *June 1, 1796*

Total Area: *42,144 square miles (source: 2010 Census)*

Population: *6,495,978 (source: 2013 Census estimate)*

State Bird: *Mockingbird*

State Flower: *Iris*

State Motto: *Agriculture and Commerce*

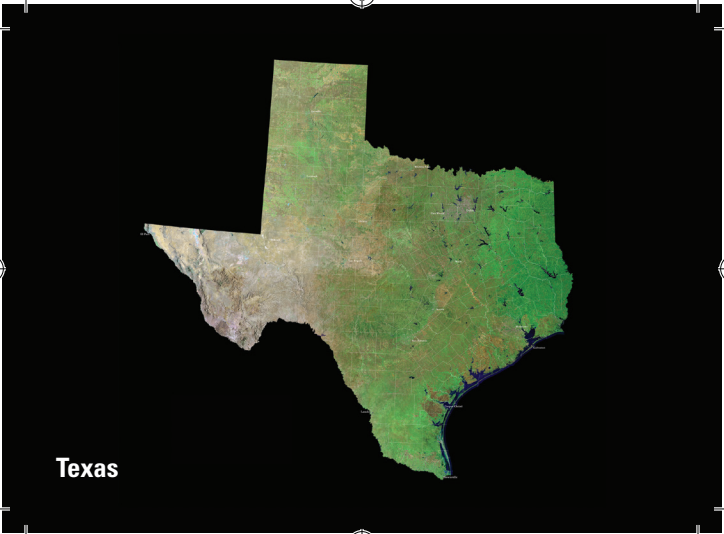
State Nickname: *Volunteer State*

Image on front derived from Landsat 7 data and the National Elevation Dataset.

Period of Acquisition: July 1999 - September 2002

usgs.gov/eros

02/14



Texas



Six flags have flown over Texas: Spain, France, United Mexican States, Confederate States of America, the Republic of Texas, and the United States of America, with eight changes of government.

Capital: *Austin*

Date Admitted to the Union: *December 19, 1845*

Total Area: *268,596 square miles (source: 2010 Census)*

Population: *26,448,193 (source: 2013 Census estimate)*

State Bird: *Mockingbird*

State Flower: *Bluebonnet*

State Motto: *Friendship*

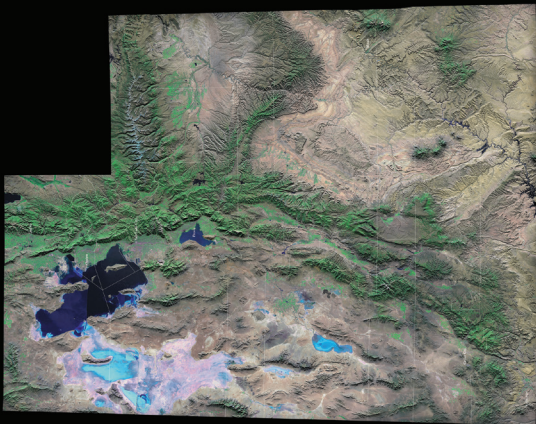
State Nickname: *Lone Star State*

Image on front derived from Landsat 7 data and the National Elevation Dataset.

Period of Acquisition: July 1999 - September 2002

usgs.gov/eros

02/14



Utah





Utah mountain peaks, on average, are the tallest in the country. The average elevation of the tallest peaks in each of Utah's counties is 11,222 feet—higher than the same average in any other state.

Capital: *Salt Lake City*

Date Admitted to the Union: *January 4, 1896*

Total Area: *84,897 square miles (source: 2010 Census)*

Population: *2,900,872 (source: 2013 Census estimate)*

State Bird: *Common American Gull*

State Flower: *Sego Lily*

State Motto: *Industry*

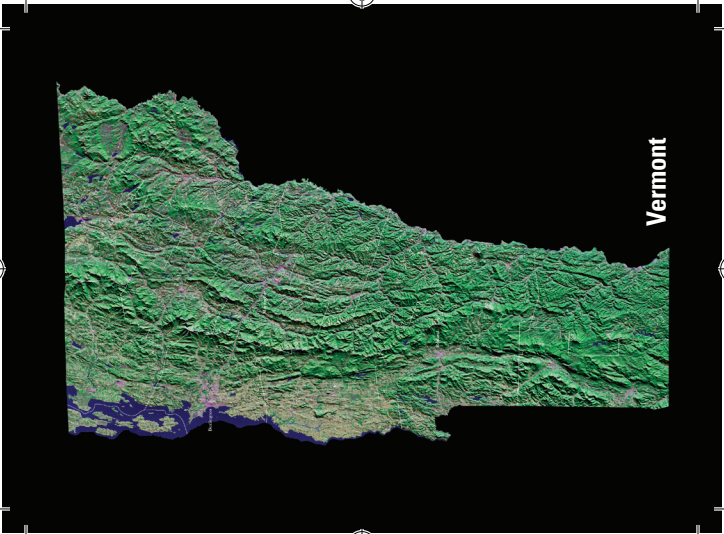
State Nickname: *Beehive State*

Image on front derived from Landsat 7 data and the National Elevation Dataset.

Period of Acquisition: July 1999 - September 2002

usgs.gov/eros

02/14



Vermont



Vermont was the first state admitted to the union after the original 13 colonies. Vermont's capital, Montpelier, is the smallest state capital with a population of less than 8,000.

Capital: *Montpelier*

Date Admitted to the Union: *March 4, 1791*

Total Area: *9,616 square miles (source: 2010 Census)*

Population: *626,630 (source: 2013 Census estimate)*

State Bird: *Hermit Thrush*

State Flower: *Red Clover*

State Motto: *Freedom and unity*

State Nickname: *Green Mountain State*

Image on front derived from Landsat 7 data and the National Elevation Dataset.

Period of Acquisition: July 1999 - September 2002

usgs.gov/eros

02/14



Virginia



Sometimes called the “Mother State,” Virginia has produced eight U.S. presidents (more than any other state): George Washington, Thomas Jefferson, James Madison, James Monroe, William Harrison, John Tyler, Zachary Taylor, and Woodrow Wilson.

Capital: *Richmond*

Date Admitted to the Union: *June 25, 1788*

Total Area: *42,775 square miles (source: 2010 Census)*

Population: *8,260,405 (source: 2013 Census estimate)*

State Bird: *Cardinal*

State Flower: *American Dogwood*

State Motto: *Sic Semper Tyrannis (Thus Always to Tyrants)*

State Nickname: *Old Dominion*

Image on front derived from Landsat 7 data and the National Elevation Dataset.
Period of Acquisition: July 1999 - September 2002

usgs.gov/eros

02/14



Washington



Mount St. Helens in southeast Washington erupted on May 18, 1980. The volcano and 110,000 acres of surrounding land are now part of the Mount St. Helens National Volcanic Monument.

Capital: *Olympia*

Date Admitted to the Union: *November 11, 1889*

Total Area: *71,298 square miles (source: 2010 Census)*

Population: *6,971,406 (source: 2013 Census estimate)*

State Bird: *Willow Goldfinch*

State Flower: *Coast Rhododendron*

State Motto: *Al-ki (By and by)*

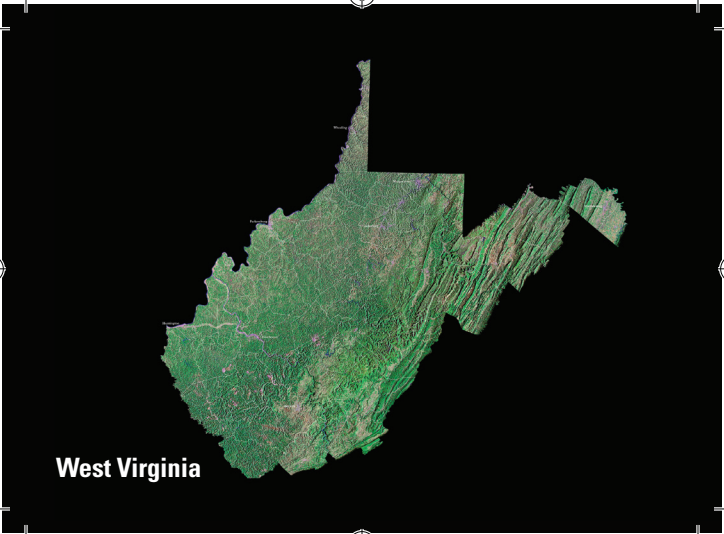
State Nickname: *Evergreen State*

Image on front derived from Landsat 7 data and the National Elevation Dataset.

Period of Acquisition: July 1999 - September 2002

usgs.gov/eros

02/14



West Virginia



During the Cold War, the Emergency Relocation Center was built to house members of Congress in the event of a nuclear attack. It is located beneath the Greenbrier Resort in White Sulphur Springs, West Virginia.

Capital: *Charleston*

Date Admitted to the Union: *June 20, 1863*

Total Area: *24,230 square miles (source: 2010 Census)*

Population: *1,854,304 (source: 2013 Census estimate)*

State Bird: *Cardinal*

State Flower: *Rhododendron*

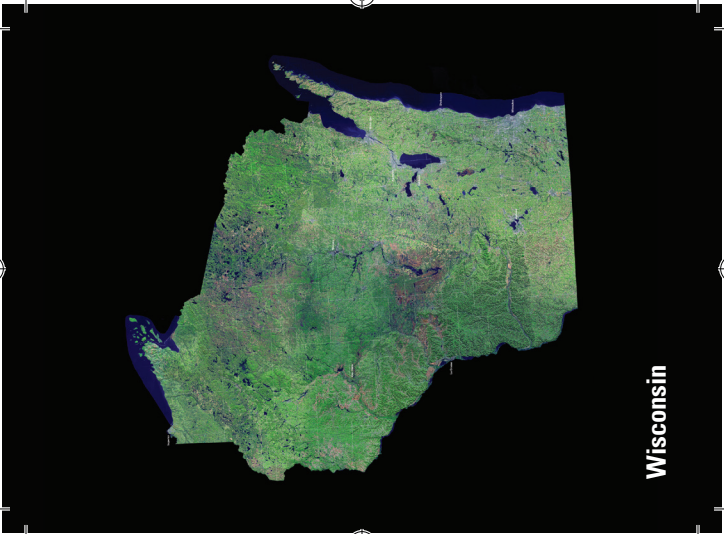
State Motto: *Montani Semper Liberi (Mountaineers Are Always Free)*

State Nickname: *Mountain State*

Image on front derived from Landsat 7 data and the National Elevation Dataset.
Period of Acquisition: July 1999 - September 2002

usgs.gov/eros

02/14



Wisconsin



Wisconsin has more than 15,000 lakes. It also has 7,446 streams and rivers, which if placed end to end would stretch nearly 27,000 miles—more than enough to circle the globe at the equator.

Capital: *Madison*

Date Admitted to the Union: *May 29, 1848*

Total Area: *65,496 square miles (source: 2010 Census)*

Population: *5,742,713 (source: 2013 Census estimate)*

State Bird: *Robin*

State Flower: *Wood Violet*

State Motto: *Forward*

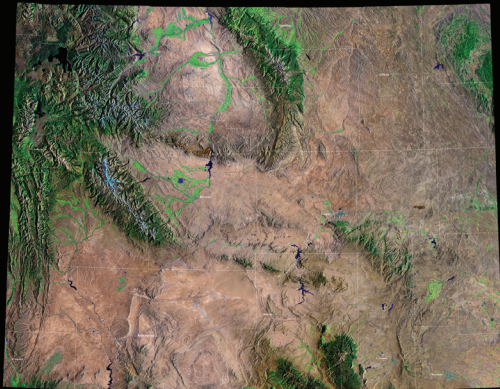
State Nickname: *Badger State*

Image on front derived from Landsat 7 data and the National Elevation Dataset.

Period of Acquisition: July 1999 - September 2002

usgs.gov/eros

02/14



Wyoming



Wyoming is home to the country's first official national park—Yellowstone, the country's first national forest—Shoshone, and the country's first national monument—Devil's Tower.

Capital: *Cheyenne*

Date Admitted to the Union: *July 10, 1890*

Total Area: *97,813 square miles (source: 2010 Census)*

Population: *582,658 (source: 2013 Census estimate)*

State Bird: *Western Meadowlark*

State Flower: *Indian Paintbrush*

State Motto: *Equal Rights*

State Nickname: *Equality State*

Image on front derived from Landsat 7 data and the National Elevation Dataset.

Period of Acquisition: July 1999 - September 2002

usgs.gov/eros

02/14





Each of the 50 States in the United States is beautiful in its own way. That beauty can be seen from a unique perspective using satellite images taken from high about the Earth. These State images were created from multiple satellite images stitched together into one seamless image for each State. Names of major cities, administrative boundaries, and State flags have been added.

Images are derived from Landsat 7 data and the National Elevation Dataset. Period of Acquisition: July, 1999 - September, 2002

<https://www.usgs.gov/centers/eros>

02/14